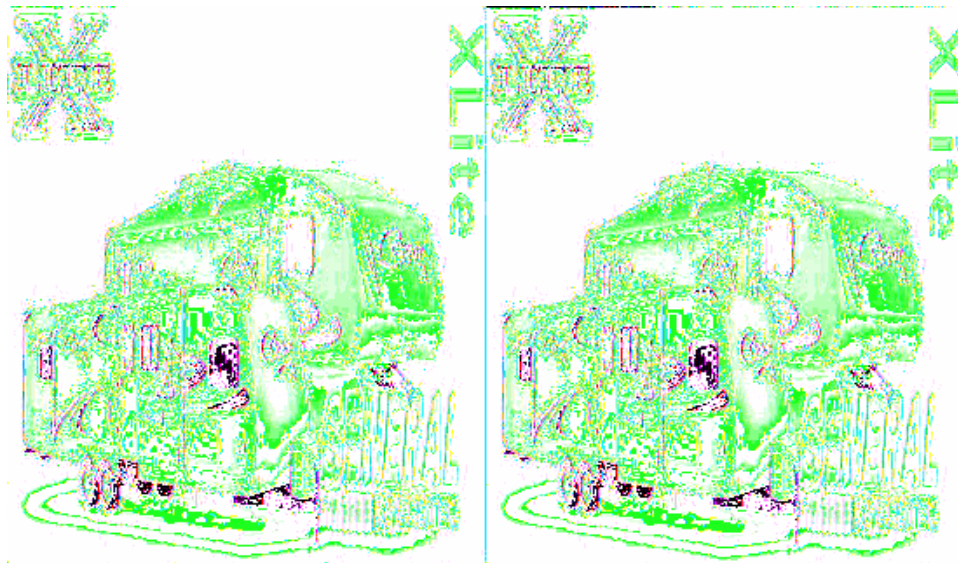
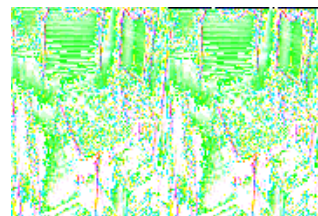


## Keystone RV Cougar X-Lite Fifth Wheels



The 2010 Keystone Cougar X-Lite travel trailers and fifth wheels offer you elegance and tow-ability with at-home conveniences while you are enjoying life on the road. With dazzling features like; a full size slideout (there is one in every model), a beautiful and functional master suite, bunk models that can sleep up to 9 people and a kitchen that you can actually cook in! Now that's just plain good taste!

Choose from a large variety of models. We're sure to have one that is just right for your family that will allow you to live life like you're used to even on vacation. The Polar Package provides a fully enclosed underbelly with heated and enclosed dump valves that will extend your camping season. So, why not start enjoying the good life. Get your 2010 Cougar X-lite travel trailer or fifth wheel today and start planning your next camping adventure!



## 2010 Cougar X-Lite 27SAB



Single Slide Bunkhouse X-Lite Fifth Wheel w/Rear Oversized Double Bunks w/XL Storage Door, Wardrobe/Ent. Center, Pantry, Booth Dinette & Sofa Slideout, LCD TV, Double Kitchen Sink, Countertop Extension, 3 Burner Range, Refrigerator, Step Up to Side Aisle Bath w/Neo-Angle Shower, Sink & Toilet, Front Queen Bed w/Wardrobes, TV Shelf and More!  
Cougar X-Lite 27SAB Specifications

Specification	Description
Length	29'10"
Width	8'0"
Height	11'11"
Hitch Weight	1,090 lbs
Dry Weight	6,830 lbs
Cargo Weight	3,007 lbs
Fresh Water Capacity	41 gals
Grey Water Capacity	56 gals
Black Water Capacity	28 gals
Furnace BTU	30,000
Sleeps	9
Tire Size	225/75R15D
Slides	1
Interior Color	Autumn Night, Bayleaf, Sedona Suede

# Cougar X-Lite Features:

## Standard Features (2010)

- Executive Chef Kitchen, most models feature:
  - Real wood cabinet doors
  - Oversized drawers for pots and pans
  - 100% larger pantry than competitors
  - Deep two bowl sink with sink cover cutting boards
  - Residential full-extension drawer-glides with steel ball bearings
- Residential porcelain toilet with foot pedal
- EZ lube axles (all models)
- 30,000 BTU furnace
- One-piece seamless rubber roof
- All windows in main slide-out open
- Swivel rocker (27RLS-2, 27RKS-2, 29FKS-1, 26RLS-2)
- Cable/satellite prep

## Camping-In-Style Pkg.

- Pleated night shades
- Laundry chute (most models)
- Black trim safety glass windows
- Microwave oven with turnstile
- Aluminum framed sidewalls, floor, front and rear wall
- 5" Fabricated galvanized steel trusses
- 13,500 BTU air conditioner
- Outside entrance handle

## Value Package

- True home CD/DVD system with speakers and separate zones (12-Volt compatible): MP3/iPod player hookup on stereo
- All weather outside speakers
- Gas/electric water heater with quick recovery
- Residential tiled shower/tub surround
- TV antenna
- Laminated fiberglass sidewalls

## Convenience Package

- Outside shower\*
- Residential refrigerator front\*
- Spare tire\*
- Outside Cook Center\*

## Dry Camping Features

- 12 Volt stereo
- Large fresh, grey and black tanks on all models
- All slideout lights are 12 volt
- Space for dual batteries

- Enclosed and heated underbelly
- Fully enclosed and heated dump valves

### **Safety Features**

- Manual backup on all main slideouts
- LP sensor
- Smoke detector
- Fire extinguisher
- Carbon monoxide detector

### **Options**

- Air mattress sofa with storage
- Free-standing dinette
- Radial tires\*
- Polar package\*
- 26" LCD TV\*
- Carbon monoxide detector\*
- Electric awning\*

*\*Mandatory option*

**See us for a complete list of features and available options!**

**All standard features and specifications are subject to change.**