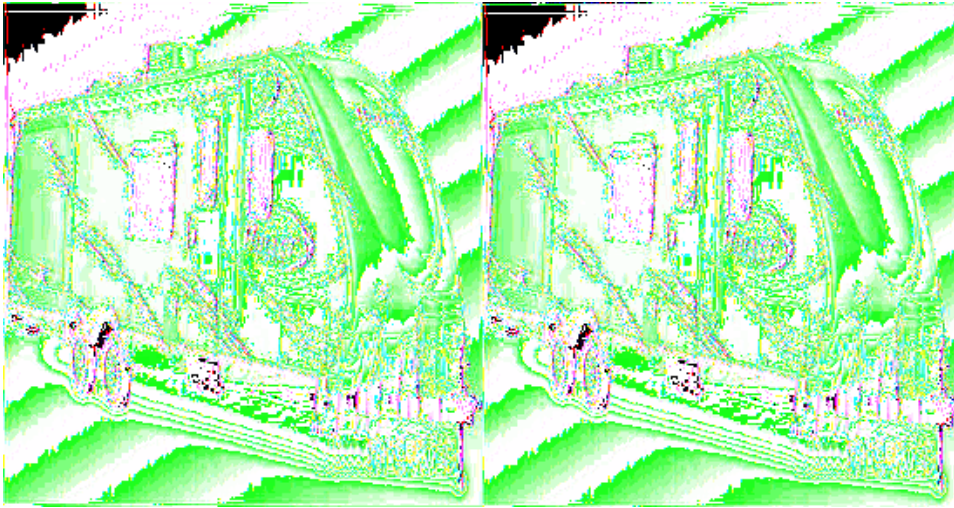


Keystone RV Bullet Travel Trailers

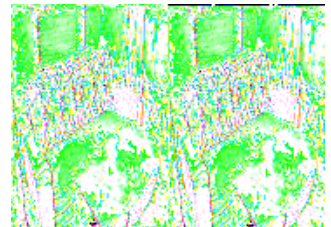
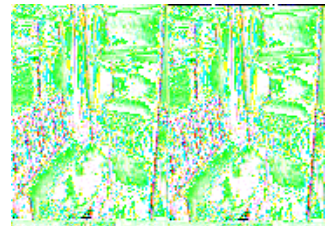
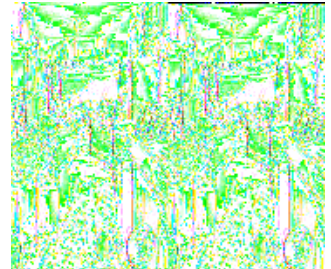


The Keystone Bullet is the Premier Ultra Lite travel trailer. Keystone's goal with the Bullet was to bring its customers the most towable and fuel efficient travel trailer on the market and fill it up with top notch features found generally on higher priced units. With this travel trailer, they hit right on target. This beauty is easy to tow because of its light weight and aerodynamic design, which naturally makes it an attractive choice for RVers who want to pull it behind their own fuel efficient crossovers, cars and trucks. And, just because its an ultra light, don't for a minute think that it isn't built tough. The Bullet is meant to provide you and your family years of enjoyment.

Choose one of eight models each with single or double slideouts to provide you with even more valuable living space. Three of the models feature bunks for the kids with quad or double bed bunk choices sleeping 8-10 individuals comfortably. With plenty of storage and sleeping space you'll even be able to take along extra family and friends.

Enjoy plenty of conveniences with a complete gourmet kitchen spacious enough to prepare your families favorite meals, and a full bath with private entry in two of the three models.

Why not let a new Bullet Premier Ultra Lite travel trailer set you on the right path to your next targeted destination! Come on and make the choice to start exploring today!



2010 Bullet 246RBS



Keystone Bullet w/Single Slideout, Rear Full Bath w/Private Toilet Area, Sink, Angle Shower, Linen Cabinet & Wardrobe, Pantry, Refrigerator, U-Shaped Dinette w/Overhead Cabinet, 3 Burner Range/Kitchen Sink & Sofa Slide w/Overhead Cabinet & Spice Rack, Swivel LCD TV for Living Area & Bedroom Viewing, Front Queen Bed w/Wardrobes Both Sides of Bed, Laundry Chute, Pass-Thru Storage and More!

Bullet 246RBS Specifications

Specification	Description
Length	27'11"
Width	8'0"
Height	10'3"
Interior Height	6'6"
Hitch Weight	415 lbs
Dry Weight	4,795 lbs
Cargo Weight	1,224 lbs
Fresh Water Capacity	41 gals
Grey Water Capacity	30 gals
Black Water Capacity	30 gals
Furnace BTU	30,000
Sleeps	6
Tire Size	205/75R14C
Slides	1
Interior Color	Blackberry, Hemlock

2010 Bullet 278RLS



Keystone Bullet Travel Trailer w/Single Slide, Rear Living Area w/Lounge Chairs w/End Table & Overhead Cabinet, Sofa/Kitchen Sink & 3 Burner Range Slideout, U-Shaped Dinette w/Swing-Out LCD TV/Overhead Cabinet, Refrigerator, Wardrobe, Bath w/Vanity & Sink, Toilet & Tub/Shower, Front Queen Bed w/Private Entry, Wardrobes Both Sides of Bed, Front Pass-Thru Storage, Laundry Chute and More!

Bullet 278RLS Specifications

Specification	Description
Length	30'6"
Width	8'0"
Height	10'3"
Interior Height	6'6"
Hitch Weight	455 lbs
Dry Weight	4,900 lbs
Cargo Weight	2,555 lbs
Fresh Water Capacity	41 gals
Grey Water Capacity	30 gals
Black Water Capacity	30 gals
Furnace BTU	30,000
Sleeps	6
Tire Size	205/75R14C
Slides	1
Interior Color	Blackberry, Hemlock

Bullet Features:

Standard Features (2010)

Construction

- Aluminum Framed Front & End Walls
- Laminated Gel-Coated Exterior Walls
- 2" Thick Laminated Aluminum Floor
- Radius Roof Transition
- In Frame Fresh, Grey, and Black Water Tanks 6" & 8" I-Beam with Welded Outriggers 1/4" ABS Enclosed Underbelly Darco Moisture Barrier
- One Piece Seamless Rubber Roof
- Wide-Stance Axle Placement
- E-Z Lube Axles
- Electric Brake System (4wheels) R-11 Floor
- R-7 Sidewall
- R-11 Roof
- Solid Bead Foam Block Insulation

Exterior Features

- Smart Vision
- Lightweight Fiberglass Front Cap
- Contoured Fender Skirts for Increased Air-Flow
- In Frame Dual Battery Rack
- Thermal Package
- Radius Entry Door w/Strut
- Stabilizer Jacks
- Drip Rail w/ Extended Down Spouts
- Oversized Exterior Pass Thru Storage w/ Lighting
- TV Antenna
- Outside Shower
- Electric Awning
- RV-Q Grill
- LP Quick Connect
- Amber Patio Light
- Exterior Speakers
- Outside Picnic Table
- Dual Propane Tanks w/Cover
- Tinted Safety Glass Windows
- Cable Hook-Up
- Heavy Duty Safety Chains
- Radial Tires
- LED Docking Lights

Interior Features

- 78" Interior Height
- Swivel Rockers (Per Floor Plan)
- Pillow Back Furniture
- 13.5 Ducted A/C

- 30K BTU Furnace (For Heated Underbelly)
- 6 Gal. Gas/Electric Water Heater w/ 16.2 Gal./Hr. Quick Recovery
- DVD/CD/AM/FM Stereo w/ I-Pod Hook-up
- 19"e; LCD Flat Panel TV
- Swivel TV w/ Magazine Rack and Convenience Center (Per Floor Plan)
- Oversized Solid Wood Raised Panel Cabinet Doors
- Water Heater-By-Pass for Winterization
- Night Shades in Living Area

Gourmet Kitchen Features

- 9" Deep Oversized Single Basin Sink
- High Rise Metal Faucet
- 6cu./ft. Double Door Refrigerator
- 17"e; Oven
- Microwave
- Spice Rack Valance
- 3 Burner High Output Range

Bathroom

- Recessed "Bullet"e; Lighting
- Tub Surround
- Deluxe Curved Shower Curtain
- Power Vent Fan
- Solid Wood Medicine Cabinet
- Foot Flush Toilet

Master Bedroom

- Upgraded Innerspring Mattress
- Roll Neck Pillows
- Mirrored Wardrobes
- Laundry Chute
- Recessed "Bullet" Lighting
- Under Bed Storage
- Full Blackout Window Treatments
- Individual Reading Lights

Bunkrooms

- Oversized Rollover Sofa w/Rear Storage
- Reversible Eco Friendly Bunk Mats
- Cable & TV Hookups
- Full Blackout Window Treatment
- Oversized Wardrobe w/ Rod (Some Floor Plans)

Options

- RV-Q Grill
- Aluminum Wheels

See us for a complete list of features and available options!

All standard features and specifications are subject to change.



Brownstown 734-284-5500
Birch Run 989-624-700
Mt. Clemens 586-954-3600

Waterford 248-674-0346
Wayland/Grand Rapids 269-792-9118
Wixom 248-349-0900