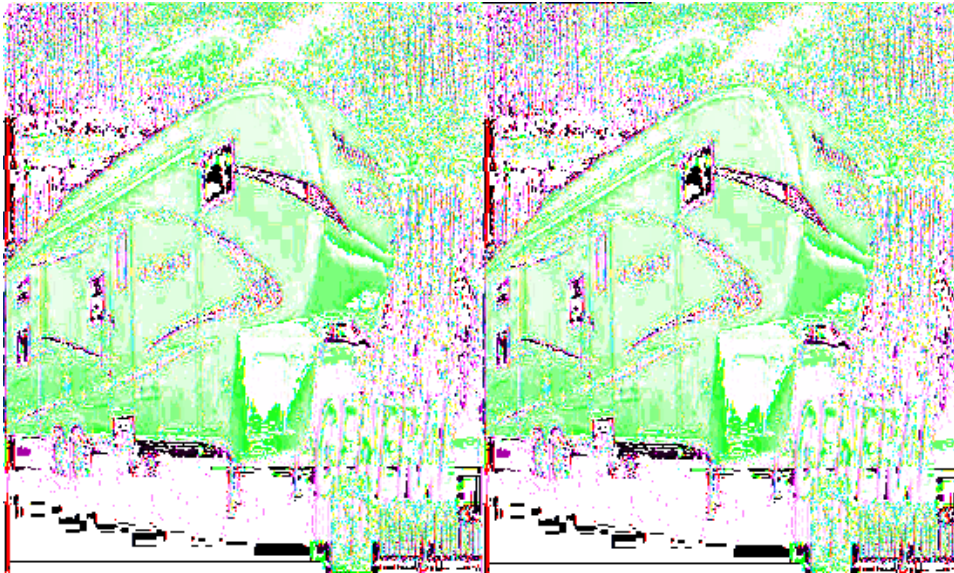


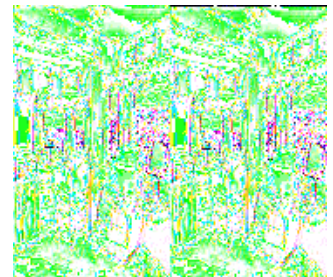
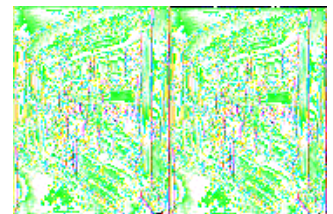
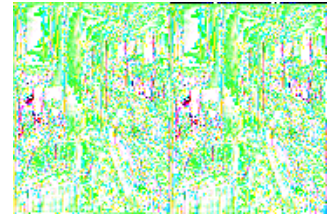
Keystone RV Mountaineer Fifth Wheels



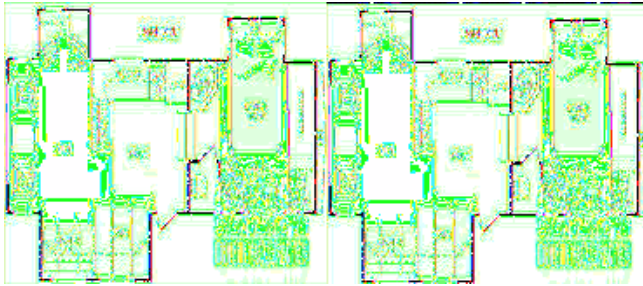
The Montana Mountaineer Edition fifth wheels by Keystone RV offer you the same excellent quality and value of the original Montana but with a sporty new look and contemporary style preferred by many of today's RV buyers. The Mountaineer has many floor plans for greater versatility giving you a choice to better suite your families needs and lifestyle making your travel time much more enjoyable.

Because Montana has spent time listening closely to their customers over the years and actually implemented the preferences for style and comfort when designing new floor plans, you would be pleased to own any of the models available. The Mountaineer Edition will give you the comfort of knowing that you have everything you need while pursuing an RV lifestyle.

So, get a Mountaineer Edition fifth wheel by Keystone RV and get quality, value and style where it counts!



2010 Mountaineer 305RLT

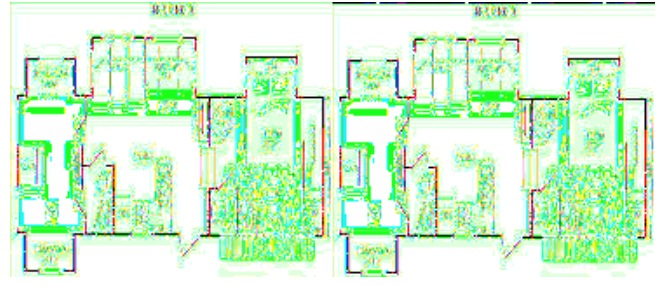


Triple Slide Keystone Mountaineer Hickory Edition Fifth Wheel w Rear Living Area, Entertainment Center w/LCD TV & Desk w/Chair Slideout, 2 Recliners w/End Table Between, Air Mattress Hide-A-Bed Sofa & Booth Dinette Slideout w/Overhead Cabinets, Double Kitchen Sink, 3 Burner Range w/Microwave, Refrigerator, Garden Tub, Private Toilet Area, Lav., Front Queen Bed w/Shelf Above, Dresser, Wardrobe, Washer/Dryer Prep w/TV Shelf Above and Much More.

Mountaineer 305RLT Specifications

Specification	Description
Length	34'4"
Width	8'0"
Height	12'9"
Hitch Weight	2,185 lbs
Dry Weight	10,315 lbs
Cargo Weight	3,870 lbs
Fresh Water Capacity	67 gals
Grey Water Capacity	93 gals
Black Water Capacity	50 gals
Sleeps	6
Tire Size	235/80R16E
Slides	3
Interior Color	Walnut, Sable, Woodland

2010 Mountaineer 345DBQ



Keystone Mountaineer Hickory Edition Bunkhouse Fifth Wheel w/Quadruple Slideouts, Rear Double Slideout Fold-Down Bunk Beds, Closet, LCD TV, 1/2 Bath w/Lav. & Toilet, Booth Dinette & Air Mattress Hide-A-Bed Sofa w/Overhead Storage, Refrigerator, 3 Burner Range, Double Kitchen Sink, Microwave, LCD TV, Garden Tub, Private Toilet Area, Lav., Dresser, Front Queen Bed w/Shelf, Wardrobe w/Sliding Doors & Washer Dryer Prep, TV Shelf & Much More.

Mountaineer 345DBQ Specifications

Specification	Description
Length	36'2"
Width	8'0"
Height	12'9"
Hitch Weight	2,390 lbs
Dry Weight	11,154 lbs
Cargo Weight	3,236 lbs
Fresh Water Capacity	67 gals
Grey Water Capacity	93 gals
Black Water Capacity	93 gals
Sleeps	10
Tire Size	235/80R16E
Slides	4
Interior Color	Walnut, Sable, Woodland

Mountaineer Features:

Standard Features (2010)

Interior

- Residential carpeting and upholstery with fabric protection
- Tall slide room with "plate depth" overhead cabinets
- Dual swivel rocker(s) (most models)
- Pleated day/ night window shades
- Deluxe oiled bronze decorative lighting
- Free-standing end table with lamp
- Deluxe crown molding
- All wood slideout fascia (HE)
- Air mattress hide-a-bed sofa (most models) (M)
- Decorative ceiling fan with 110V light fixture (M)
- Euro recliner(s) with ottoman (347 only) (optional)
- High back desk chair (optional)
- 12" wraparound super sofa booth (optional)
- Jackknife sofa in place of (2) recliner/gliders (295 only) (optional)

Exterior

- 5" fabricated steel truss rafters
- Max turn fiberglass front cap
- Block foam insulation in sidewall (R-9)
- Residential fiberglass insulation in floor and roof (R-14)
- Fully enclosed and heated underbelly
- Enclosed and heated holding tanks and water lines
- Hitch and security light
- Extra wide 30" entrance door
- Radius baggage doors with locking latches
- Smooth-operating, easy-to-use entrance steps
- "Mountain Gold" radius wrap lower walls
- 110V outlet and TV hook up
- Medallion (TM) high gloss sidewalls (HE)
- 12 volt electric patio awning (HE)
- Drop frame pass through storage compartment (HE)
- Gen II easy set remote control system (HE)
- Electric rear stabilizer jacks (HE)
- Exterior convenience center (HE)
- 8 lug, 16" wheels and Goodyear tires (M)
- Under mount spare tire and carrier (M)
- Dexter E-Z Lube Axles (M)
- Dual patio security lights (M)
- Outside speakers with control switch (M)
- Outside shower with quick connect (M)
- Black tank flush (M)
- Electric front stabilizer jacks (M)
- Fold away entry handle (M)
- Rear roof ladder (M)
- Equa Flex (TM) Suspension system (optional)

- Aluminum wheels (optional)
- Slide awning package (double slides) (optional)
- Slide awning package (triple slides) (optional)
- Slide awning package (quad slides) (optional)
- Pass-through slide trays (optional)
- Dual pane windows (optional)

Bedroom

- Fabric headboard
- Quilted bedspread, two pillows with shams
- Three-drawer bedroom dresser with full extension drawer guides (most models)
- Solid panel bedroom door(s) with oiled bronze handles
- Full width sliding mirror closet doors
- Under-bed storage with lift-assist struts
- Washer/dryer hookup (prep)
- Deluxe innerspring 60" x 80" mattress (M)
- Dual reading lights over the bed (M)
- Ceiling mounted coax and 12 volt plug (M)
- Two bedside windows in the slideout (M)
- 19" ceiling mount LCD HD TV (optional)

Kitchen

- Lighted range hood with fan
- Garbage can
- Silverware tray
- Power vent fan in kitchen/Living room
- Booth dinette w/storage cabinet and drawer
- Shaker style hickory cabinet doors (HE)
- Full extension drawer guides (HE)
- Wide deep hickory drawers (HE)
- Solid surface countertops (HE)
- Cabinet toe kicks (M)
- Dual sinks with high rise faucet (M)
- Free standing dinette with 4 chairs (optional)

Bathroom

- Larger residential bath sink
- Larger residential-size bath sink
- Tub/shower with oiled bronze glass enclosure
- Medicine cabinet w/ large mirrored door
- Oiled bronze bath sink faucet
- Oiled bronze vanity light
- Full linoleum bath flooring
- Solid panel doors with oiled bronze handles
- Deluxe wood grain towel holder
- Deluxe residential porcelain toilet (M)
- 12 volt fan in the commode room (M)
- Sky dome over the tub (M)

Appliances

- 32" LCD HD TV (HE)

- 8 cu. ft. double door refrigerator (M)
- Deluxe microwave oven with exterior exhaust fan (M)
- 15,000 BTU ducted roof air conditioner with wall-mounted thermostat and "Quick Cool" (M)
- Range cover (M)
- High-output range with automatic igniter and 22" oven (M)
- Digital TV antenna booster (M)
- Washer/dryer prep (M)
- RG-6 satellite prep (M)
- Electric fireplace (305, 324 or 326 only) (optional)
- 2nd 13,500 BTU A/C (50 amp electrical service required) (optional)
- Wire and Frame for 2nd A/C (50 amp service required) (optional)
- Power vent fan in bath/bedroom (optional)
- 12 volt 19" bedroom LCD TV (optional)
- 12 volt 19" garage LCD TV (347 only) (optional)

Utilities

- Systems monitor panel
- 55 Amp Converter
- Water heater by-pass kit (M)
- 10-gallon gas/electric DSI water heater (M)
- 50 amp electrical service (M)
- Generator ready (Onan 5.5 kw - LP Generator)
- Onan Marquis Gold 5.5 kw-LP Generator (Requires Generator Ready) (optional)

Hickory Edition Package

- Max Turn front cap and radius frame
- Drop frame pass thru storage compartment
- Gen II EasySet remote control system
- Electric rear stabilizer jacks
- Exterior convenience center
- 12-volt electric awning
- 32-inch HD LCD TV
- Medallion (tm) semi-gloss sidewalls
- Solid surface kitchen countertops
- Full extension metal drawer guides
- Hickory wood grain cabinets
- All-wood slideout fascia

Moving to Montana Package

- Queen (60 by 80) innerspring mattress
- Fabric bedroom headboard
- E-Z Lube axles with 8 lug wheels
- Two bedside windows in the slide-out
- 12-volt AM/FM/CD/DVD with Surround Sound
- RG6 Satellite Prep
- 15,000 BTU A/C with QuickCool
- Air mattress hide-a-bed sofa
- 10 Gallon DSI 110/12volt water heater
- Ceiling fan with light kit
- 8 Cu.Ft. large double door refrigerator
- Glacier Package
- Dual reading lights over bed

- Digital TV antenna with booster
- Cabinet toe kicks
- Water heater by-pass
- Outside speakers
- Black Tank Flush
- Rear roof ladder
- Microwave
- 22-inch oven with broiler
- Dual Patio outdoor activity lights
- 50 amp service
- High output range with ignitor
- Deep tint safety glass windows
- Sky dome over the tub
- Range cover
- Fold away entry handle
- Under mount spare tire and carrier
- Electric front jacks
- Outside shower with quick connect hose
- Power vent fan
- Double sink with hi-rise faucet
- Deluxe porcelain toilet

Construction

Roof (R-14)

- Rear ladder
- 15,000 BTU A/C
- One-Piece EPDM rubber roof membrane
- Aluminum radius roof transition molding
- 3/8" Structurewood roof decking
- R-14 fiberglass insulation
- Aluminum wrapped AC duct
- Ceiling decking with vinyl
- 5" Fabricated galvanized steel truss rafters on 16" centers
- Extended roof gutter spouts

Sidewalls (R-9)

- Fold-away grab handles
- 30" x 74" entry door with window
- 2" Welded aluminum wall studs
- Interior decorator board
- Electro-Galvanized sheet (EGS) metal backing strips
- High density solid block insulating foam
- Luan wall board
- Second layer 1/8" Luan board with seams staggered
- Medallion Hi-Gloss fiberglass
- Heavy duty insulated baggage doors
- Exterior convenience center
- Electric patio awning
- Security light
- Fiberglass front cap with improved turning radius and hitch vision
- Side mounted hydraulic selectro valves

Floor (R-14)

- Electric rear jacks
- DARCO Wrapped main floor moisture barrier
- Fiberglass insulation
- One piece fluted polypropylene fully enclosed sub floor
- 3" large capacity heat duct
- Heavy duty 8 lug wheels with easy lube axles
- Equa flex suspension
- Enclosed and insulated water lines
- Powder coated 10" steel rolled I-beam
- Residential linoleum
- Full radius wrap aluminum enclosure
- 3" welded aluminum floor
- Drop frame chassis design with flat floor storage
- Dual 30 lbs. LP bottles on each side
- Easy access adjustable snap jack pins
- 5/8" seamless floor decking
- Residential carpet pad
- Residential grade carpeting with stain protection
- Extended hitch pin

See us for a complete list of features and available options!

All standard features and specifications are subject to change.