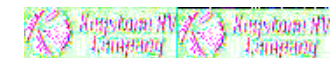
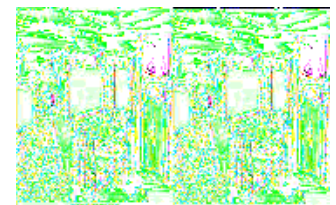
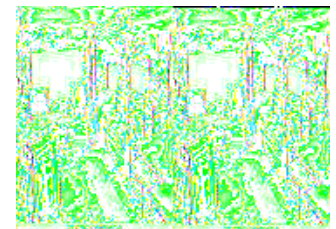
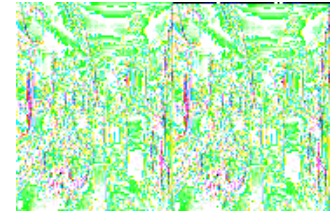
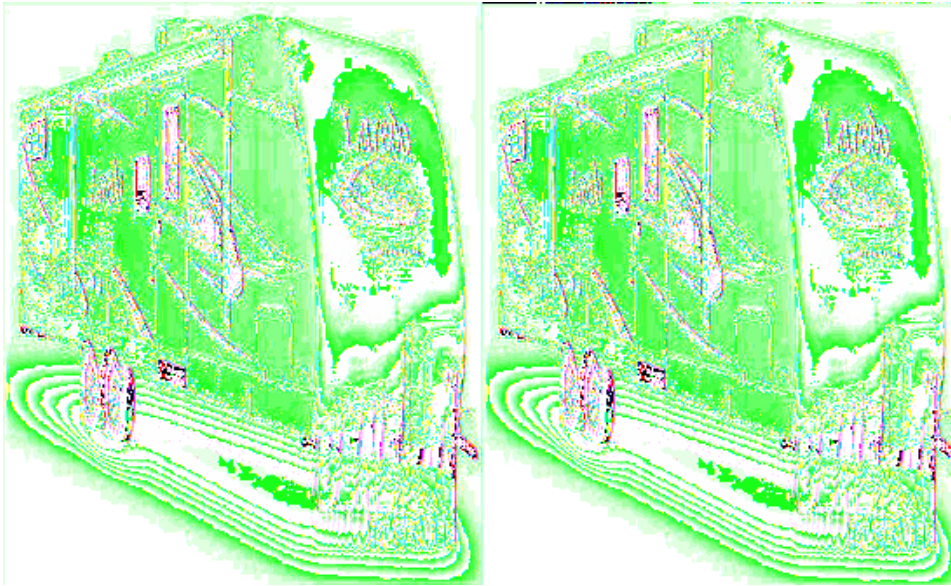


## Keystone RV Laredo Super Lite Travel Trailers



The Keystone Laredo Super Lite travel trailers are for those looking for a light weight trailer with a higher level of luxury. A luxury trailer that you can tow with a half ton truck or SUV. One that has interior beauty and conveniences usually found only in the upscale brands. One that you can settle quickly into the scenic haven of your choice and right away begin to relax and enjoy your chosen get-a-way. Basically, an RV that is truly "Best In Class."

When you are best in class...your Hi-Definition LCD television swivels a full 180 degrees and can be viewed from the living room or bedroom. Your audio package features a 12 volt in wall AM/FM/CD/DVD player and a convenient auxiliary input jack for MP3 iPod. Your standard sofa includes an electronic air mattress and a super size linen drawer below. You have tall, residential-style kitchen cabinets that have convenient shelves. And, every drawer includes full extension steel ball bearing drawer guides for strength and maximum storage.

With any Keystone Laredo Super Lite travel trailers you'll get the "Best In Class!" Are you ready to be on top? Come choose your model today!

## 2010 Laredo Super Lite 291TG

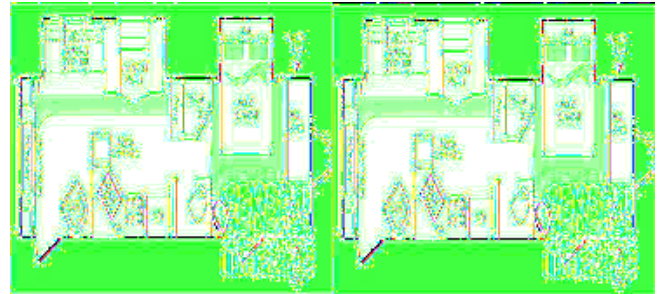


Single Slide Laredo Super Lite Travel Trailer w/Rear Bunkhouse w/Quad Bunks w/Ent. Center/Wardrobe Between, Outside Refrigerator w/Countertop & Overhead Cabinet & Flip Out Stove, Pantry, Family Sized U-Dinette & Sofa Sleeper Slideout, Tub/Shower, Vanity w/Sink & Toilet, Refrigerator, 3 Burner Range, Double Kitchen Sink w/Counter Extension, Revolving Ent. Center, Front Queen Bed w/Wardrobes, Pass-Thru Storage and More!

Laredo Super Lite 291TG Specifications

Specification	Description
Length	33'0"
Height	10'11"
Hitch Weight	600 lbs
Dry Weight	6,685 lbs
Cargo Weight	1,515 lbs
Fresh Water Capacity	43 gals
Grey Water Capacity	30 gals
Black Water Capacity	30 gals
Furnace BTU	30,000
Sleeps	10
Tire Size	225/75R15D
Slides	1
Interior Color	Birch, Copper Ridge, Rainforest

## 2010 Laredo Super Lite 296RE



Laredo Super Lite Travel Trailer by Keystone w/Double Slideouts, Rear Living Area w/Full Wall Ent. Center w/Electric Lift, Sofa Sleeper w/Air Mattress and Family Sized Dinette Slideout, Lounge Chair, Pantry, Dbl. Kitchen Sink, 3 Burner Range, Refrigerator, Flip-Up Counter Extension, Angle Shower, Private Toilet Area, Sink, Queen Bed Slideout, Private Bedroom Entry, Master Closet, TV/Wardrobe, Front Pass-Thru Storage and More!

Laredo Super Lite 296RE Specifications

Specification	Description
Length	33'0"
Width	8'0"
Height	10'11"
Hitch Weight	710 lbs
Dry Weight	7,077 lbs
Cargo Weight	1,123 lbs
Fresh Water Capacity	43 gals
Grey Water Capacity	30 gals
Black Water Capacity	30 gals
Furnace BTU	30,000
Sleeps	6
Tire Size	225/75R15D
Slides	2
Interior Color	Birch, Copper Ridge, Rainforest

# Laredo Super Lite Features:

## Standard Features (2010)

### Chassis

- Powder-coated I-beam frame
- Tube style bumper w/sewer hose storage
- Electric slideout system w/manual override
- Radial tires
- EZ lube axles
- Electric brakes
- Full-size spare tire

### Exterior

- Fully enclosed underbelly
- Heated, enclosed holding tanks & gate valves
- Oversized lighted pass-thru storage
- Exterior shower w/hot & cold
- Exterior marine grade speakers
- Rain gutters w/downspouts
- Security light
- Entrance door light
- Triple entrance steps
- Outside 110V outlet & TV connection

### Living Area

- Dinette w/storage below
- Ventilating windows on slideout end walls
- Overhead cabinets in slide rooms
- Residential grade carpet and padding
- Stain resistant fabrics
- Pleated fabric shades
- Designer window treatments
- Raised panel mortise & tenon cabinet doors
- Entertainment center w/TV cabinet

### Kitchen

- Residential-size overhead cabinets
- Sink cover
- Flip up countertop extension
- 60/40 deep-bowl under-mount sink
- Metal high-rise faucet
- Linoleum floor
- Ball bearing full extension drawer guides

### Bathroom

- Oversized tub/shower

- Tub surround w/shelves
- Foot pedal flush toilet
- Residential-size bath sink
- Medicine cabinet
- Skylight over bath
- Power roof vent

### **Bedroom**

- 60"X80" innerspring mattress
- Bedspread w/matching headboard
- Wardrobe storage
- TV hook-up
- Reading lights

### **Appliances**

- 26" LCD HD TV (298-32" LCD HD TV)
- 12V AM/FM/CD/DVD home theater system w/ surround sound effect speakers
- Double door refrigerator w/wood inserts
- Microwave with carousel
- Range hood and light
- High output range w/auto igniter

### **Utilities**

- 2-30lb LP bottles w/auto changeover
- 30,000 BTU high-output furnace w/auto ignition
- 6 gallon gas/electric DSI hot water heater
- Water heater bypass kit
- Systems monitor panel
- Cable & satellite connections
- 55-amp power converter
- 30-amp power cord

### **Safety**

- Break away switch
- Tinted safety glass windows
- GFI receipts
- Carbon monoxide detector
- Smoke alarm
- Propane gas leak detector
- Fire extinguisher

### **Best In Class Package (All TT's)\***

- Adjustable electric awning
- (4) Electric stabilizer jacks
- Equa-Flex suspension system
- Aluminum wheels
- Air mattress sleeper sofa w/storage below
- Diamond plate front protection
- "Family Sized" dinettes
- Glacier Package \*Mandatory Package

### **Optional Equipment (TT)**

- 15,000 BTU ducted A/C
- Free standing dinette w/4 chairs
- Canadian certification

**See us for a complete list of features & available options!**

**All standard features and specifications are subject to change.**