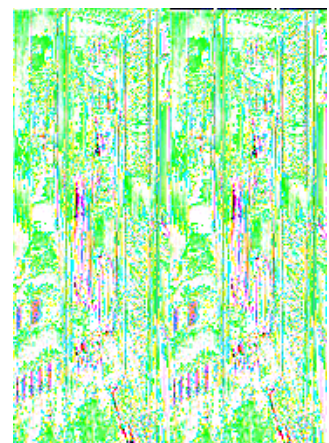
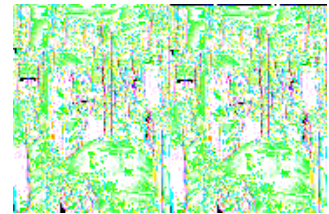
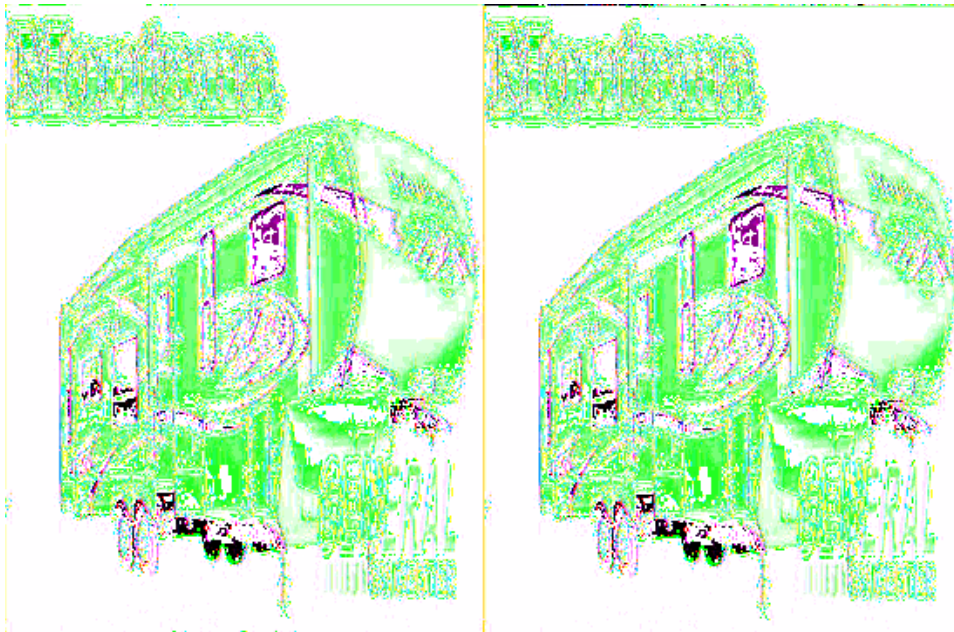


Keystone RV Montana Fifth Wheels



The Keystone Montana fifth wheel remains #1 for another year in North America! With plush residential furniture, state of the art remote controlled electronics, and solid hickory cabinetry you'll find the Montana Hickory Edition fifth wheels are even more luxurious than before.

Standards that make for luxurious living in the Montana are the two 32" wide, high back glider recliners complete with lumbar cushions. An optional 5100 BTU electric fireplace is available on most models. Imagine relaxing in your favorite chair at the end of a full day of adventure while enjoying the warmth of a fire as it takes away the night chill.

You'll also have the option of having a computer workstation for surfing the Internet or catching up on your e-mail. The extra deep file drawers provide storage for important files or paperwork you need to travel with. There is even extra storage space above the desk.

Your family will enjoy the meals you cook from the complete Montana kitchen with all the necessary amenities for any meal you decide to make. You'll enjoy the spaciousness in each Montana bedroom as well as throughout the rest of the coach. The armoire is very versatile and can even be converted to fit a washer & dryer to make coming home very easy. No weeks worth of laundry to do here!

Why not come and choose a Montana Hickory Edition fifth wheel for unparalleled comfort and luxury as you travel from place to place! Choose your model today!



2010 Montana 3150 RL



Keystone Montana FW w/Triple Slideouts, Rear Living Area w/2 Recliners & Overhead Cabinets, Sofa w/Air Mattress Hide-A-Bed & Free Standing Dinette Slideout, Desk/Ent. Center Slide w/Overhead, L-Shaped Counter w/DbL. Kitchen Sink & 3 Burner Range, Refrigerator, Step Up to Bed & Bath w/Angle Garden Tub, Private Toilet Area, Sink, 6 Drawer Chest, Washer/Dryer Prep, Wardrobe, Queen Bed Slideout w/Nightstands, Opt. King Bed, Hamper and Much More!

Montana 3150 RL Specifications

Specification	Description
Length	34'5"
Width	8'0"
Height	12'9"
Hitch Weight	1,965 lbs
Dry Weight	11,184 lbs
Cargo Weight	2,781 lbs
Fresh Water Capacity	66 gals
Grey Water Capacity	93 gals
Black Water Capacity	50 gals
Furnace BTU	35,000
Sleeps	4
Tire Size	235/80R16E
Slides	3
Interior Color	Mocha, Emerald Isle, Sapphire

2010 Montana 3465 SA



Triple Slide Montana Fifth Wheel w/Rear Living Area Including 2 Recliners, Slideout Ent. Center/Desk w/Chair & Overhead Cabinets, Sofa w/Air Mattress Hide-A-Bed & Free Standing Dinette Slide, Double Kitchen Sink, 3 Burner Range, Refrigerator, Pantry, Step Up to Side Aisle Bath w/Garden Tub, Toilet & Sink w/Med. Cabinet, Front Queen Bed Slideout w/King Opt., Wardrobe, Washer/Dryer Prep, Nightstands, 6 Drawer Chest and More!

Montana 3465 SA Specifications

Specification	Description
Length	37'4"
Width	8'0"
Height	12'9"
Hitch Weight	1,925 lbs
Dry Weight	11,734 lbs
Cargo Weight	3,691 lbs
Fresh Water Capacity	66 gals
Grey Water Capacity	93 gals
Black Water Capacity	50 gals
Furnace BTU	35,000
Sleeps	4
Tire Size	235/80R16E
Slides	3
Interior Color	Mocha, Emerald Isle, Sapphire

2010 Montana 3665 RE



Quad Slide Montana Fifth Wheel, Rear Fireplace & 42" Lift-Up TV, Two Lounge Chair Slideout, Sofa Air Mattress Hide-A-Bed & Free Standing Dinette w/Chairs Slideout, 3 Burner Range/Pantry/Refrig. Slideout, L-Shaped Counter w/DbL. Kitchen Sink, Overhead Cabinets, Pantry, Step Up to Side Aisle Bath w/Garden Tub, Toilet, Lav. w/Med. Cab., Front Queen Bed Slide w/Nightstands, Opt. King Bed, 6-Drawer Chest, Washer/Dryer Prep., Wardrobe w/Sliding Doors and More.

Montana 3665 RE Specifications

Specification	Description
Length	37'3"
Width	8'0"
Height	12'9"
Hitch Weight	2,045 lbs
Dry Weight	12,351 lbs
Cargo Weight	3,194 lbs
Fresh Water Capacity	66 gals
Grey Water Capacity	93 gals
Black Water Capacity	50 gals
Furnace BTU	35,000
Sleeps	4
Tire Size	235/80R16E
Slides	4
Interior Color	Mocha, Emerald Isle, Sapphire

Montana Features:

Standard Features (2010)

Exterior

- 2" laminated, gel-coated Filon exterior walls (R-9)
- Insulated radius baggage doors with inside fasteners
- Radius wrap lower walls
- Heated, enclosed and insulated water lines, dump valves and holding tanks tested for 0 degree usage
- Seamless, one-piece 5/8" Dynaspan floor decking
- "Wide Stance" front jack legs with adjustable snap jack pins
- Rear roof ladder
- Rear back-up lights
- Heavy duty 8-lug wheels
- Brand name 16" steel belted radial tires
- Undermount spare tire and carrier
- 30" wide entry door
- Enormous front storage compartment with double doors and hooks for power cord and water hose (over 142 cubic feet of total exterior storage)
- 110v and 12v outlets with cable/satellite hook-up in pass through storage compartment

Interior

- Residential full extension steel drawer guides
- High-density residential carpeting
- 7 lb. Rebond carpet padding
- Designer linoleum kitchen floor and entryway
- True flush floor main slide rooms in living area w/R-14 floor insulation
- 6'6" extra tall slide room with 15" tall, 17" deep overhead cabinets in living area
- Day/night shades
- Oil rubbed bronze hardware and lighting package
- Computer work station with data port and electrical outlet (most models)

Kitchen

- Free standing dinette with plush upholstery and storage in the seat
- Full extension, wide deep drawers
- Residential size overhead cabinets
- High output range with automatic ignitor
- Lighted range hood with exhaust fan
- 22" oven with broiler

Bathroom

- 36" garden tub with glass enclosure, (3) shelves and washcloth holder
- Deluxe, oil rubbed bronze adjustable height shower head
- Single lever faucet
- Adult height vanity with large base cabinet
- Larger residential-size bath sink
- Bright decorative vanity light
- Residential-style medicine cabinet
- Heated commode room with 12v exhaust fan

Bedroom

- Single level bedroom/bath suite
- Quilted bedspread and 2 pillow shams
- Residential-sized chest of drawers with hidden storage compartment
- 12 volt 19" LCD bedroom TV
- Bedside nightstand shelves
- "Shoe closet" storage area in wardrobe

Utilities

- 35,000 BTU furnace with automatic ignition and high capacity in floor ducting
- 50-amp service
- 50-amp detachable marine power cord
- Systems monitor panel
- Satellite/cable hook-up
- Carbon monoxide detector
- Fresh water 66 gal.

Hickory Edition Features

- Aerodynamic front cap with Hitch Vision
- Seamless, one-piece underbelly enclosure
- Enormous drop frame pass-through storage compartment with flush floor and no stain Congoleum
- 32" HD LCD TV with pull-out swivel tray (40" HD LCD TV with electric lift on 3455SA and 3665RE)
- Solid hardwood cabinet stiles, cabinet doors with raised panels and radius corners, end panels, crown molding and desk tops
- Dupont Corian counter top and sink with oversized bowls and pull-out faucet with sprayer
- (2) Flush mount Dupont Corian sink covers
- Free standing dinette with swiveling and sliding table top plus leaf extension
- 30" OTR Microwave with built in range hood
- Solid surface bathroom lavatory top, oversized one-piece molded sink and back splash
- Easy Set Remote Control System: remote control electric rear stabilizer jacks, remote control electric front jacks, remote control A&E 12v power awning, remote control hydraulic slideouts, remote control patio scare light
- 12 gal. DSI gas/electric water heater
- 80 amp Xantrex XADC converter
- Grey water capacity = 93 gallons
- Black water capacity = 50 gallons
- Easy store sewer boom

Hickory Edition Package

- Max turn front cap and radius frame with Hitch Vision
- Radius rear cap with easy flow graphics
- Radiant technology roof insulation (R-38 Total)
- 30" deep bedroom slideout (increased 6")
- 6' 6" tall main slideout (Increased 2")
- Easy store rotating sewer boom
- Generation II easy set remote control system
- Hickory cabinet doors and drawers
- Hickory stiles, end panels and crown molding
- Solid hardwood slideout fascia
- 30" OTR Microwave with built in range hood
- Drop frame pass-thru storage compartment
- Corian kitchen counter tops and sink covers
- Solid surface bathroom lavatory with molded sink
- Seamless underbelly enclosure
- Free standing dinette with swiveling top

- 32" HD LCD TV with pull out tray
- 80 amp XADC converter
- 12 gallon DSI gas/electric water heater
- 50 gallon black tank capacity
- 93 gallon gray tank capacity
- EASY STORE SEWER BOOM
- AUTOMATIC ENTRY LIGHT

Moving to Montana Package:

- Queen (60 x 80) innerspring mattress
- Central exterior convenience center
- Dexter E-Z lube axles with 8 lugs
- MOR/ryde rubber suspension system
- Artic insulation package
- Vented attic
- Deep tint safety glass windows
- 15,000 BTU A/C with Quick Cool
- Air Mattress hide a-bed- sofa
- Washer / Dryer prep
- Convection microwave oven
- Ceiling fan with light kit
- (2) flush mount kitchen sink covers
- Cedar lined front closet
- Dual reading lights over the bed
- Wire and frame for 2nd A/C with remote sensor and dual zones
- Rear accessory hitch
- 1/2 turn hydraulic selector valves
- Dual high back recliners
- Stamped steel roof rafters
- Welded, aluminum framed walls and floors
- R-9 laminated sidewalls with dual layered luan
- FM/CD/DVD Player with 5.1 surround sound
- RG-6 Satellite prep
- 50 amp service
- Raised panel refer front
- Digital TV antenna with booster
- Deluxe porcelain toilet
- Black tank flush
- Sky dome over the tub
- Hidden safe
- Aluminum wheels
- Fold away entry handle
- Rear roof ladder
- Dual patio security lights
- Under mount spare tire and carrier

Please see us for a complete listing of features, options and available packages!

All standard features and specifications are subject to change.