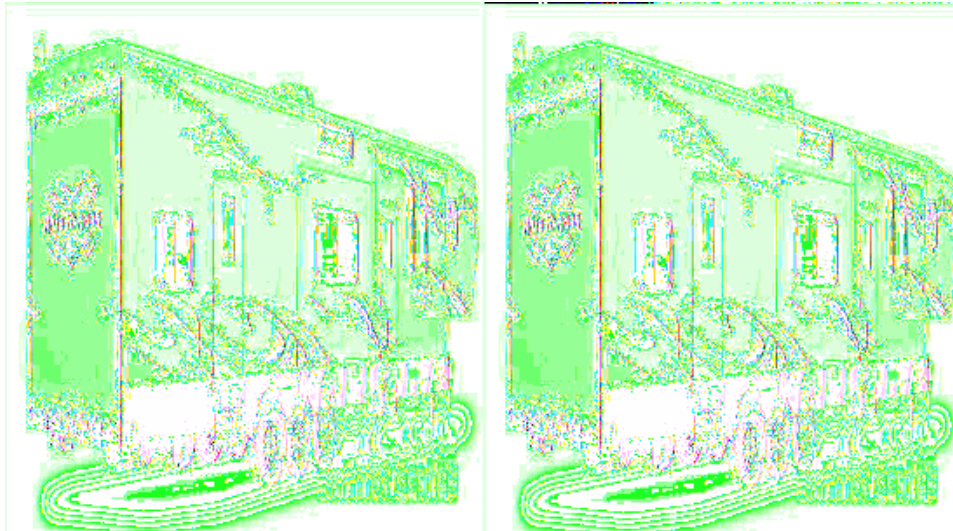


## Heartland Road Warrior Toy Hauler Fifth Wheels

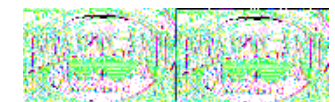
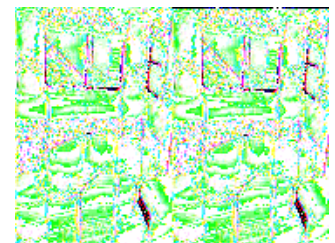
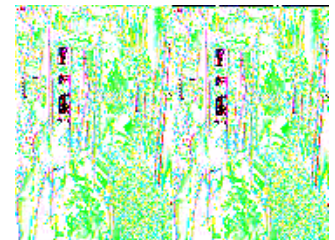
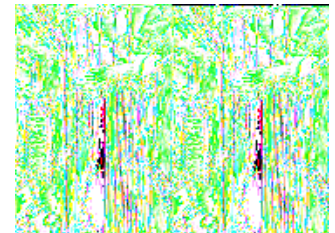


Heartland's newest multi-lifestyle vehicle is on the move! The Road Warrior fifth wheel toy hauler with its bold exterior graphics package and choice of decors will have you and your toys traveling in comfort and style guaranteed!

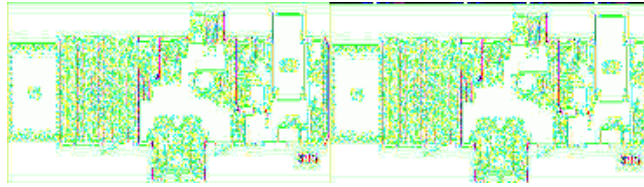
Each Road Warrior model comes with beautiful chestnut maple cabinetry with glazed hardwood doors, a washer/dryer prep in all models, oil rubbed bronze hardware and fixtures throughout, plus a 32" LCD TV in the living room just to name a few. The spacious side aisle bath arrangement provides more privacy with the shower, toilet and lavatory all in one location. And, with the high end chestnut maple cabinetry and convection microwave in the kitchen you'll enjoy preparing your favorite snacks and meals.

Choose one of four models with double or triple slideouts to help maximize your interior living space. You also have an option of adding an electric queen bed split bench seat/bed to your cargo area for extra sleeping space.

With the new Heartland Road Warrior fifth wheel toy hauler the fun is just around the corner. Get yours today and hit the road with the hottest multi-lifestyle vehicle around and become a Road Warrior whenever the mood strikes you!



## 2010 Road Warrior 395



Triple Slide Road Warrior FW Toy Hauler w/Rear Cargo Area w/Storage, Table w/Stools, Overhead Loft, Opt. Elect. Queen Bed Split Bench Seat/Bed, Side Door, Door to Living Area, Stairs to Loft, 1/2 Bath, Lounge Chair, U-Shaped Dinette Slide, Slideout Refrig & 3 Burner Range, Dbl. Sink, Side Aisle Bath w/Dbl. Entry, Shower, Sink & Toilet, Front Queen Bed Slide w/Storage, Dresser, Opt. Wash/Dryer, Ward. w/Built in Storage and More!

### Road Warrior 395 Specifications

Specification	Description
Length	41'11"
Width	8'5"
Height	13'2"
Hitch Weight	3,191 lbs
Dry Weight	13,272 lbs
Gross Weight	18,000 lbs
Axle Weight	18,000 lbs
Fresh Water Capacity	100 gals
Grey Water Capacity	82 gals
Black Water Capacity	82 gals
Furnace BTU	35,000
Sleeps	8
Tire Size	ST235/80R16E
Slides	3
Exterior Color	Blue/Silver
Interior Color	4 Color Choices

# Road Warrior Features:

## Standard Features (2010)

### Interior

- All Hardware Oiled Rubbed Bronze including shower door
- Chestnut Maple Cabinetry w/Glazed Doors
- Residential Countertops
- Apollo ½ Time Convection/Microwave Oven Built in Base Cabinet
- 8 cu. Ft. Refer
- Full Length Ball Bearing Drawer Glides
- Décors - Auburn Hill, Sand Dune, Wine, Midnight
- 12 gal Water Heater
- Power Vent – Kitchen, Bedroom, Bathroom, Loft, Cargo Area
- Night Shades
- Mini Blinds Cargo Area
- Counter Extension (305RW)
- D-rings Cargo Area & Basement Floor
- Neo Angle Shower
- Chestnut Maple Head Board
- Washer/ Dryer Prep in Front Wardrobe
- Residential style linoleum laid on a diagonal
- High end residential carpet
- Dinette table with pedestal mounts

### Exterior

- 12" Frame (305RW - 10" Frame)
- Standard Graphics
- 16" Tires & Aluminum Rims
- Tinted safety windows (black framed)
- Front Cap with 88° Turning Radius
- Electric Front Landing Jacks
- Detachable Ladder
- Manuel Awning
- 15,000 BTU AC
- 2nd A/C Prep (N/A Low Pro)
- 50 amp service
- Enclosed and Heated Under Belly
- Scare Lights 1 front DS / 1 rear ODS
- Flood Lights Rear
- Exterior Hot & Cold Shower w/High Pressure Nozzle
- Gen Prep w/Fuel Station & Timer
- Under Frame Storage Boxes (100 lb Capacity Each) & Spare Tire Mount
- Built in Universal Docking Station - All Hookups in One Convenient Location
- 1" Thick Baggage Doors

### A/V Equipment

- 32" LCD Flat Screen TV
- 12v AM/FM Stereo w/CD/DVD/MP3

- Amplifier
- Sub Woofer
- 4 Ceiling Speakers
- 2 Exterior speakers

## **Options**

- Warrior Graphics Package (Blue & Silver)
- Onan Generator (5.5 KW)
- Onan Generator (5.5 KW Carb Certified)
- Electric Awning
- Patio Sliding Door (305RW, 385RW, 395RW))
- Toy Lock
- ABS Hitch Cover
- Central Vacuum
- Fantastic Fan w/Rain Sensor in Kitchen
- Rear Screen
- Rear Electric Queen Bed w/Convertible Sofa
- Two recessed beaver tail storage lids

**See us for a complete list of features and available options!**

**All standard features and specifications are subject to change.**