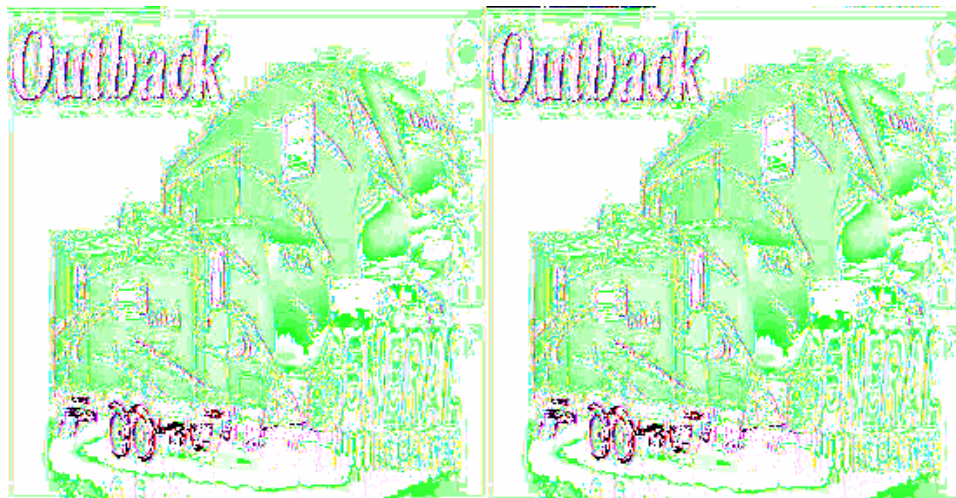


## Keystone RV Outback Fifth Wheels

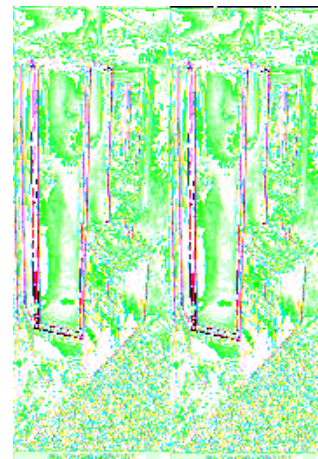
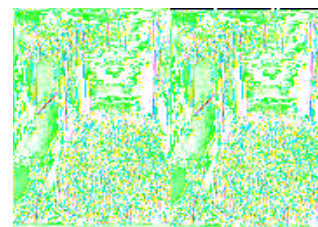
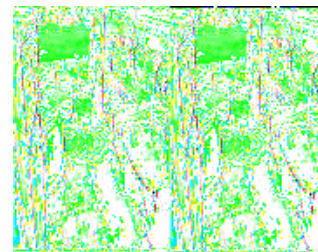


The Keystone Outback is a super lightweight designed travel trailer and fifth wheel with even more comfort and style packed in for this year. It remains an easy to tow trailer with its aerodynamic designed profile and its progressive graphics make it stand out in a crowd.

You'll enjoy a larger dinette and more living area with deeper 36" flush-floor slideout rooms. With oversized windows you can bring all the nature that surrounds you right inside as you enjoy your morning cup of joe. And, with the incredible amount of storage you'll find in the Outback kitchen, as well as throughout the trailer, you won't have any trouble packing for those extended vacations.

For those times when you just want to soak up all that nature offers you'll really enjoy using the Outside Camp Theatre that includes an LCD TV that can be mounted on a clip provided underneath the awning. Most Outback models also provide an Outside Camp Kitchen including a 2-burner cook top, hot and cold water, a 20' water hose and a cutting board and towel bar.

Choose from several floorplan designs in one of three beautiful fabric decor options to pair with the eclectic mix of Butter Rum Cream and Auburn Cherry cabinets. This new look adds a level of sophistication unheard of in other lightweight trailers. So, why not see first hand why people love the Keystone Outback. Take your camping to a whole new level in a new Outback travel trailer or fifth wheel today!



## 2010 Outback 285FL



Keystone Outback Fifth Wheel w/Rear Living Area Including 2 Chairs w/Table Between, Air Sofa Sleeper & Booth Dinette Slideout w/Overhead Storage Above Sofa, Double Kitchen Sink, 3 Burner Range, Refrigerator, Pantry, LCD TV, Step Up to Bed & Bath w/Angle Shower, Lav. Private Toilet Area, Wardrobe/Closet, Front Queen Bed w/Wardrobes Both Sides, Pass-Thru Storage and More!  
Outback 285FL Specifications

Specification	Description
Length	30'0"
Width	8'0"
Height	12'2"
Hitch Weight	1,390 lbs
Dry Weight	7,203 lbs
Cargo Weight	2,297 lbs
Fresh Water Capacity	43 gals
Grey Water Capacity	60 gals
Black Water Capacity	30 gals
Furnace BTU	30,000
Sleeps	6
Tire Size	225/75R15D
Slides	1
Interior Color	Russet, Havana, Fern

# Outback Features:

## Standard Features (2010)

### Living Area

- Rich residential Auburn cherry hardwood cabinetry with a touch of butter rum cream thermofoil raised panel doors
- King U-shape dinette (most models)
- 36" flush floor slide outs
- Large panoramic windows
- Pre-drilled and screwed cabinetry
- Custom designed box valance with lambrequins
- Linoleum flooring
- Large wood side drawers with steel guides
- Water, soil stain resistant fabrics
- Large overhead cabinets
- Residential air bed sleeper sofa (most models)\*
- 20" LCD HDTV\*
- Pleated shades\*
- Decorative wall lights\*

### Kitchen

- 60/40 deep sink with 3" drains
- Trash can storage\*
- Two door 6 cu. Ft. refrigerator
- High-rise faucet
- Monitor panel
- Utensil tray
- 3 burner range with oven\*
- Microwave

### Bedroom

- Deluxe innerspring mattress
- TV hook-up
- Jalousie tinted black frame windows for maximum ventilation
- Residential bedspread
- Deluxe headboard
- His and her lights
- Bedroom speakers
- Night stand w/ outlet

### Bath

- Power roof vent
- Skylight over tub
- Porcelain foot flush toilet
- Laundry hamper
- Tub surround\*
- Garden shower (269RB, 286FK)
- Deluxe medicine cabinet

- Large linen closet (most models)

## Appliances

- AM/FM/CD stereo with DVD player and MP3 hookup (N/A 210, 230, 250, 280)
- Two door 6 cu. Ft. refrigerator
- 3 burner range with oven\*
- Six gallon gas/electric DSI water heater by pass with 16.2 gallons per hour "quick recovery"\*
- 13,500 BTU AC wall thermostat
- 30,000 BTU furnace
- Microwave

## Exterior

- Black framed tinted jalousie safety glass windows
- Extra large baggage doors, 1" thick with continuous hinge and rubber D-seal
- Assist entry grab handle
- Extended drip caps and full length drip rail
- Two security lights (one on each side)
- Porch light
- Hitch light
- Step light
- Weather encapsulated body trim
- Exterior 120V receptacle
- Heated enclosed underbelly including tanks and valves
- LP tank cover
- Automotive style fender skirts
- Double welded dual battery brackets
- Exterior TV mount with cable hook up
- Front diamond plate rock guard
- Satellite prep
- Exterior speakers
- Easy lube axles
- Outside camp kitchen\*
- Exterior quick connect LP hook-up

## Walls - Construction

- 1 1/2" welded aluminum walls with R9 insulation
- Solid block foam insulation

## Roof

- 5" galvanized steel tapered truss on 16" centers
- 3/8" roof decking
- One-piece EPMD rubber roof
- R14 blanket insulation

## Floor

- 2" welded aluminum laminated floor
- R14 blanket insulation
- Wrapped vapor barrier
- Polypropylene enclosed heated underbelly encloses tanks and valves

## Chassis

- Leaf spring equalizing suspension system
- Powder coated I-beam
- EZ lube axles
- 10" electric brakes
- 15" radial tires\*
- Aluminum rims

## Utilities

- 55-amp converter
- 30 lbs. LP bottles with auto changeover
- TV antenna with booster, cable TV
- 30-amp shore power line
- LP leak detector
- Smoke detector
- Carbon monoxide detector\*
- Fire extinguisher
- Tinted safety glass windows
- Break-away switch
- Safety chains (travel trailer only)
- Manual slide backup on all electric slide outs

## Options

- Designer package
- Comfort package
- Carbon monoxide detector
- Tub surround
- Outside camp kitchen
- RVIA
- Radial tires
- 15" Spare tire, carrier & cover
- 6-Gal. gas/elec. DSI water heater
- Oven
- Stabilizer jacks (4) TT (2) FW
- 2 Security lights at side
- Air bed sofa sleeper
- 20" LCD HDTV campsite theatre
- Electric front jacks (FW only)
- Aluminum rims

## Outback Comfort Package

- TV antenna/cable
- Microwave
- AM/FM/CD stereo with MP3
- hookup
- Patio awning
- 13,500 BTU ducted A/C
- Outback air vent

## Outback Designer Package

- Sofa bolsters
- Wall border
- Cloth shower curtain (most models)
- Laundry hamper
- Bathroom accessories
- Oil rubbed nickel coat hooks
- Utensil rack
- Innerspring mattress
- Bedspread
- LP/Battery cover
- Raised panel refrigerator
- Pleated shades
- Decorative wall lights
- Trash can

**See us for a complete list of features, available options and packages!**

**All standard features and specifications are subject to change.**