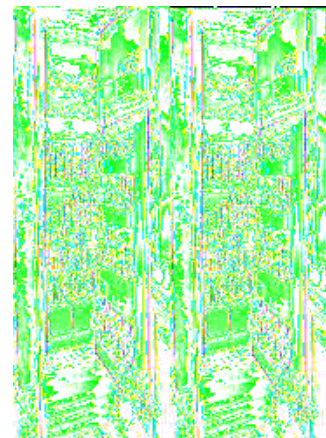
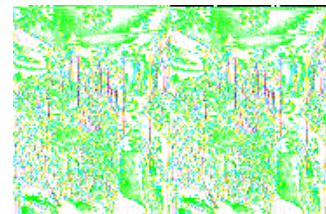
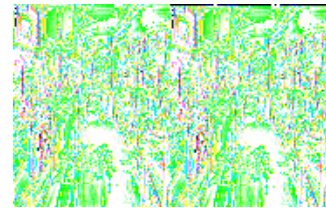


Keystone RV Outback Sydney Edition Fifth Wheels

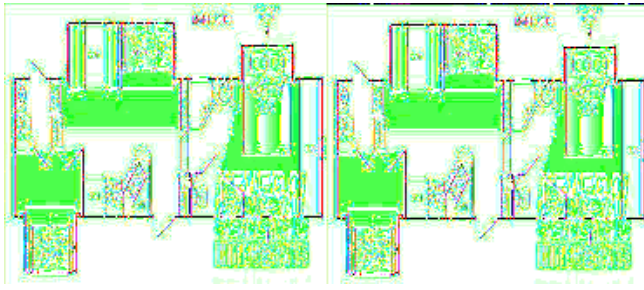


Experience the wonder of Keystone's Outback Sydney Edition fifth wheels and travel trailers. Focused on aerodynamic and tasteful design throughout for a fresh new look of today. Outback has earned a reputation for high-end quality at a mid-range price point.

Outback uses the latest technology to combine strength with lightness. From its smooth exterior finished with no exposed fitting, to the concealed hinges of the easy maintenance Thermofoil lightweight cabinetry. You'll be amazed at the standard features, and the appealing options, like the free-standing dining table with pedestal base and slatted wood chairs.

How can anything be so sturdy, innovative and attractive? Ask any Sydney owner! Experience an Outback Sydney Edition travel trailer or fifth wheel by Keystone today and see for yourself!

2010 Outback Sydney Edition 320FDB



Triple Slide Outback Sydney Edition Fifth Wheel w/Rear Air Sofa Sleeper Slide w/Bunk Above, Rear Corner 1/2 Bath w/Private Entry, Including Linen Closet, Toilet & Sink, Pantry, Dinette & Air Sofa Sleeper Slide, Refrigerator, 3 Burner Range, Dbl. Kitchen Sink, 2nd Pantry, Ent. Center, Angle Shower, Sink, Private Toilet Area, Wardrobe/Closet, Drawers, Queen Bed Slide, Pass-Through Storage Front Full Wall Wardrobe and More!

Outback Sydney Edition 320FDB Specifications

Specification	Description
Length	36'0"
Width	8'0"
Height	12'4"
Hitch Weight	1,795 lbs
Dry Weight	10,019 lbs
Cargo Weight	1,936 lbs
Fresh Water Capacity	50 gals
Grey Water Capacity	80 gals
Black Water Capacity	80 gals
Furnace BTU	30,000
Sleeps	8
Tire Size	225/75R15D
Slides	3
Interior Color	Russet, Fern, Havana

2010 Outback Sydney Edition 321FRL



Triple Slide Sydney Outback Fifth Wheel by Keystone RV w/Rear Living Area Including 2 Lounge Chairs, Sofa & Booth Dinette Slide, Desk/Ent. Center w/LCD TV Slide w/Overhead Storage, Dbl. Kitchen Sink, 3 Burner Range, Refrigerator, Step Up to Side Aisle Bath w/Angle Shower, Toilet & Sink, Pantry, Linen Cabinet, Wardrobe/Closet, Drawers, Queen Bed Slide, Full Front Wardrobe, Pass-Thru Storage and More!

Outback Sydney Edition 321FRL Specifications

Specification	Description
Length	35'1"
Width	8'0"
Height	12'4"
Hitch Weight	1,845 lbs
Dry Weight	9,509 lbs
Cargo Weight	2,506 lbs
Fresh Water Capacity	50 gals
Grey Water Capacity	80 gals
Black Water Capacity	40 gals
Furnace BTU	30,000
Sleeps	5
Tire Size	225/75R15D
Slides	3
Interior Color	Russett, Fern, Havana

Outback Sydney Edition Features:

Standard Features (2010)

Living Area

- Rich residential cherry hardwood cabinetry with a touch of butter rum cream thermofoil raised panel doors
- Large panoramic windows
- Pre-drilled and screwed cabinetry
- King U-shape dinette (TT only)
- 36" flush floor slides
- Access door under dinette
- Etched glass upper cabinets
- Custom designed box valances
- with soft curtains
- Pleated shades
- Linoleum flooring
- Deep wood side drawers with steel guides
- Skylight (most models)
- 6'2" extra tall slide out with 16" cabinets (fifth wheels only)
- Water, soil, stain resistant fabrics
- Large overhead cabinets
- Decorative wall lights
- Residential air bed sleeper sofa*
- 26" LCD HDTV flat screen (TT only)*
- 32" LCD HDTV flat screen (FW only)*
- Central command center

Kitchen

- 60/40 deep sink with 3" drains
- Trash can storage
- High rise faucet
- Utensil tray
- Microwave
- 3 burner range
- Oven*

Bedroom

- Deluxe innerspring mattress
- TV hook-up
- Solid wood slider bedroom door
- His and her wall lights
- Deluxe wardrobe
- Residential bedspread with headboard
- Bedroom speakers

Bathroom

- Residential Neo-angle shower (most models)
- Glass shower door (most models)

- Residential height vanity
- Porcelain foot flush toilet
- Deluxe medicine cabinet

Appliances

- AM/FM/CD/ stereo with DVD player and MP3 hook-up
- 8 cu. Ft. two door refrigerator
- 3 burner range
- 6 Gallon gas/electric DSI water heater and by-pass with 16.2 gallons per hour "quick recovery"*
- Wall mounted thermostat controlled AC
- 30,000 BTU furnace

Exterior Features

- Black framed tinted jalousie safety glass windows
- Extra large baggage doors, 1" thick with continuous hinge and rubber D-seal
- Folding entry grab handle
- Extra wide 30" radius main entry doors*
- Front diamond plate rock guard (TT only)
- Hitch light (TT only)
- Hitch vision mirror with docking lights (FW only)
- Satellite prep
- Molded front fiberglass cap (FW only)
- Extended drip caps, full length drip rails
- Two security lights (one on each side)*
- Heated enclosed underbelly including tanks and valves
- Ladder (FW only)
- Porch light
- Snap pins on front jacks (FW only)
- Exterior 120V receptacle
- Weather encapsulated body trim
- Automotive style fender skirt
- Exterior speakers
- EZ lube axles
- Electric awning
- Outside camp kitchen*
- Exterior quick connect LP hook-up

Walls - Construction

- 2" welded aluminum framed side walls and end walls
- Solid block foam R9 insulation

Roof

- 5" tapered truss on 16" centers
- 3/8" roof decking
- One-piece EPMD rubber roof
- R14 blanket insulation

Floor

- 3" welded aluminum floor joist 13" on center

- 5'8" seamless marine grade wood decking
- R14 blanket insulation
- Wrapped vapor barrier
- Polypropylene enclosed heated underbelly enclosed tanks and valves

Chassis

- Leaf spring equalizing suspension system
- 8" powder coated I-beam (TT only)
- 10" powder coated I-beam (FW only)
- EZ lube axles
- 12" electric brakes
- 225 75/15 radial tires*

Utilities

- 55-amp converter
- 2 - 30 lbs. LP bottles with auto changeover
- TV antenna with booster cable TV
- 30-amp shore power line

Safety

- LP leak detector
- Smoke detector
- Carbon monoxide detector*
- Fire extinguisher
- Tinted safety glass windows
- Break-away switch
- Safety chains (TT only)
- Manual slide backup on all electric slide outs

Sydney Options

- Designer Package
- Comfort Package
- Oven
- Air bed sleeper sofa
- 26" LCD TV (TT)
- 32" LCD TV (FW)
- Large radius entry door
- RVIA
- 6 gallon gas/electric DSI water heater bypass w/ 16.2 gal per hour "quick recovery"
- Electric front jacks (FW)
- Carbon monoxide detector
- Free standing table & chairs
- Stabilizer jacks (4) TT (2) FW
- 2nd residential air bed sleeper sofa (only on 310BHS)
- Radial tires
- Security lights (one on each side)
- Outside camp kitchen
- 15" spare tire, carrier & cover
- Aluminum rims

Sydney Designer Package

- Wallpaper border
- Shower door (most models)
- Bathroom accessories
- Utensil tray
- Residential air bed sofa sleeper
- 6 panel raised refrigerator panels
- Trash container

Sydney Comfort Package

- Roof air conditioner
- TV antenna with booster
- Electric patio awning
- AM/FM/CD stereo with DVD player and MP3 hook-up
- Folding entry handle
- Satellite prep
- Outback air vent

**Denotes STD Build Options*

See us for a complete listing of features and options!

All standard features and specifications are subject to change.