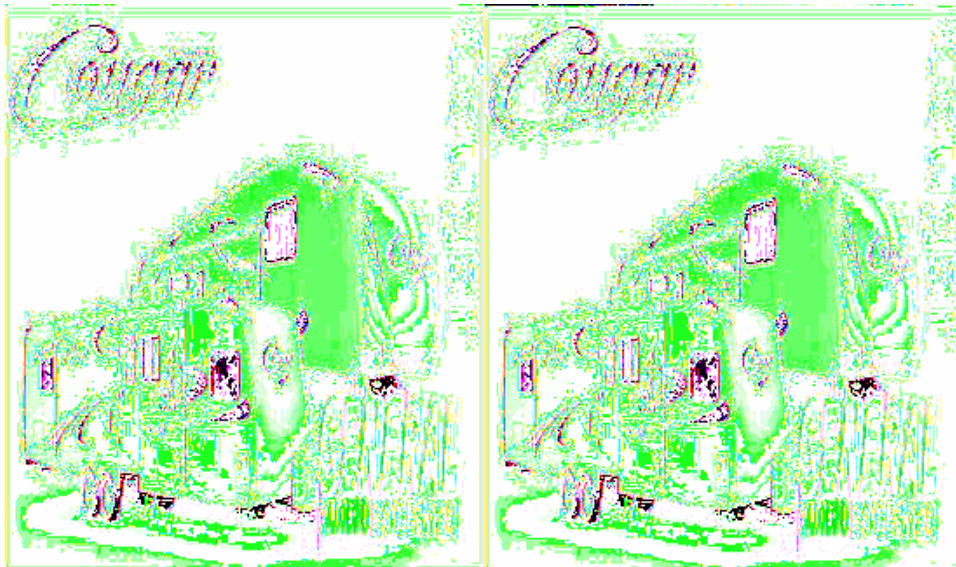


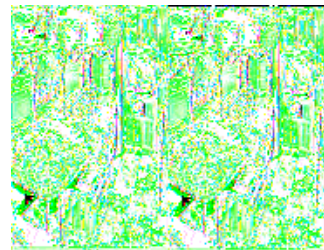
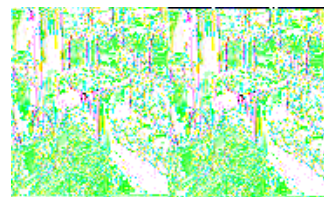
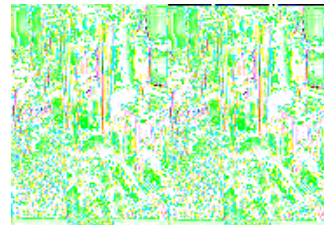
Keystone RV Cougar Travel Trailers



The ever-popular Cougar travel trailers and fifth wheels by Keystone are where luxury and lightweight meet. The Cougar models carry features that you and your family will love. From spacious interiors, to luxury baths, to bunkhouses that can't be beat - you definitely get more for your money with a Cougar.

Select from three beautiful fabric decors to make this a travel home that reflects your own personal taste and style. Pick the options that will make life away from home as comfortable as possible and then you'll be ready to select your next adventure. For the fifth wheel Cougar buyers you'll be telling all your friends about the patent pending Hitch Vision. With the specially designed front cap, the turning radius will be significantly improved and you'll be able to handle tight parking maneuvers even when attached to a short bed pick-up truck.

So if you are looking for quality and want to be the first on your block with something different, the Cougar travel trailers and fifth wheels from Keystone were designed with you in mind. With unique models like the Cougar Den, choice of seven bunkhouse models, and three toy hauler garage models, there is bound to be a Cougar that is perfect for you and your family. Come choose yours today!



2010 Cougar 26BHS



Single Slide Cougar Bunkhouse Travel Trailer w/Rear Corner Bunk Beds, Rear Corner Bath w/Sink, Toilet & Tub/Shower, Booth Dinette & Sofa Slideout w/Overhead Cabinets, Pantry, Refrigerator, 3 Burner Range, Double Kitchen Sink, Flip-Up Countertop, Overhead Cabinets, Swivel LCD TV, Front Queen Bed w/Wardrobes Both Sides and Much More!

Cougar 26BHS Specifications

Specification	Description
Length	28'11"
Width	8'0"
Height	10'11"
Hitch Weight	680 lbs
Dry Weight	5,940 lbs
Cargo Weight	1,860 lbs
Fresh Water Capacity	60 gals
Grey Water Capacity	76 gals
Black Water Capacity	38 gals
Furnace BTU	30,000
Sleeps	8
Tire Size	225/75R15D
Slides	1
Interior Color	Autumn Night, Bayleaf, Sedona Suede

2009 Cougar 302RLS

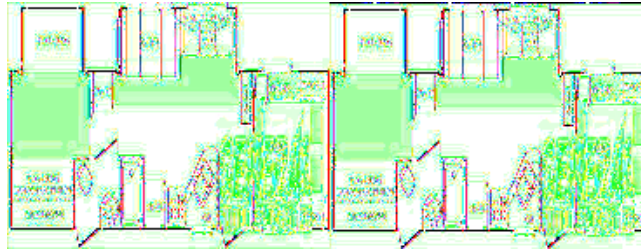


Double Slide Cougar Travel Trailer by Keystone, Rear Living w/2 Lounge Chairs w/End Table Between, Overhead Storage, Sofa & Booth Dinette Slideout w/Overhead Storage Above Sofa, Dbl. Kitchen Sink, 3 Burner Range, Refrig., Pantry, Ward., LCD TV, Neo-Angle Shower, Vanity w/Sink, Toilet, Front Queen Bed Slideout w/Overhead Cab., Dresser/TV, Laundry Chute, Master Ward., Overhead Cabinet, Pass Thru Storage, Private Bedroom Entry & More.

Cougar 302RLS Specifications

Specification	Description
Length	33'9"
Width	8'0"
Height	11'2"
Hitch Weight	875 lbs
Dry Weight	7,668 lbs
Cargo Weight	2,007 lbs
Fresh Water Capacity	60 gals
Grey Water Capacity	38 gals
Black Water Capacity	38 gals
Furnace BTU	30,000
Sleeps	5
Tire Size	225/75R15D
Slides	2
Interior Color	Autumn Night, Bayleaf & Desert Sunset

2009 Cougar 307BHS



Double Slide Cougar Bunkhouse Travel Trailer by Keystone w/Quad Bunks, Rear Side Bunk Slideout, 38" x 74" Bunks w/Wardrobe & TV Below, Pantry, Booth Dinette & Sofa Slideout, LCD TV, Front Queen Bed w/TV Shelf, Wardrobes, Double Kitchen Sink, 3 Burner Range, Refrigerator, Bath w/Private Exterior Entry Including Lav., Toilet and Tub/Shower, Exterior Storage & Much More!

Cougar 307BHS Specifications

Specification	Description
Length	35'8"
Width	8'0"
Height	11'4"
Hitch Weight	840 lbs
Dry Weight	7,904 lbs
Cargo Weight	3,096 lbs
Fresh Water Capacity	60 gals
Grey Water Capacity	76 gals
Black Water Capacity	38 gals
Furnace BTU	30,000
Sleeps	10
Tire Size	225/75R15D
Slides	2
Interior Color	Autumn Night, Bayleaf & Desert Sunset

Cougar Features:

Standard Features (2010)

Construction

Roof (R-14)

- One-piece EPDM rubber roof membrane with 12 year warranty
- Aluminum radius roof transition molding
- 3/8" roof decking
- 5" fabricated rafters on 16" centers
- Fiberglass insulation
- Ceiling decking Luan backer
- Vinyl ceiling panel
- Insulated, foam-core air conditioning duct
- Hitch Vision (Patent Pending)

Sidewalls (R-9)

- Gel-coated Filon fiberglass
- 1/8" Luan board
- Solid block insulating foam (R-14, Roof-R-9, Sidewalls)
- Interior decorator board
- 2" welded aluminum wall studs
- Electro-galvanized sheet (EGS) metal backing strips
- Easy access adjustable snap jack pins
- Maximum turning radius for short bed trucks
- Tinted safety glass windows
- Docking lights

Floor (R-14)

- 8" and 10" steel "rolled" I-beam
- 3" welded aluminum floor
- 3" large-capacity heat duct
- 1/4" ABS sectioned underbelly
- Welded cross members
- Full radius wrap aluminum enclosure
- Moisture barrier
- Fiberglass insulation
- 5/8" seamless, floor decking
- Residential-grade carpeting with stain protectant
- 2" heat duct from furnace into underbelly
- Enclosed water lines
- Ultra-lube axles

Cougar Eastern & Western Region Models

- 5-sided aluminum construction
- Residential porcelain toilet with foot pedal
- Ultra lube hubs on axles (all models)
- Snap jack pins (all Fifth Wheels)

- All Fifth Wheel models under 12' exterior height (fit under your 12' door)
- 30,000 BTU furnace
- One-piece seamless rubber roof
- All windows in main slideout open

"Camping In Style" Package

- Day and Night Shades
- Laundry chute
- Black trim safety glass windows
- (tinted to keep the sun out)
- Microwave oven with turn style
- A & E awning
- Aluminum framed sidewalls,
- floor, front and rear walls
- 13,500 BTU air conditioner
- Raised-panel cabinet doors

Value Package

- True home CD/DVD system with speakers and separate zones (12-Volt compatible);
- MP3 player hookup on stereo
- Gas/electric water heater with quick recovery
- Residential tiled shower/tub surround
- TV antenna
- Cable hook-up
- Gel coated filon fiberglass
- Full walk-on roof
- Fiberglass walls
- Rear stabilizer jacks

Safety Must-Haves

- Manual backup on all main slideouts
- T-mold bulb seals on all slideouts to keep slider sweeps on your slide out (stays on in hot weather)
- LP sensor
- Smoke detector
- Fire extinguisher
- Carbon monoxide detector

Dry Camping Features

- 12 volt stereo/I-pod compatible
- Large fresh, grey & black tanks on all models
- All slideout lights are 12 Volt
- Space for dual batteries
- Under 12' exterior height (on most models) to stay clear of low hanging lights
- Entire underbelly enclosed to keep debris off tanks, water lines, etc.
- All lights 12V compatible

Convenience Package (Western) Travel Trailers

- Outside shower*
- Residential refrigerator front*

- Spare tire*
- Front diamond plate**Mandatory Option

Fifth Wheels

- Outside shower
- Residential front
- Spare tire

Convenience Package (Eastern)

- Residential refrigerator front*
- Spare tire*
- Outside shower** Mandatory Option
- XL grab handle*

Options

West & East Coast Options

- 32" LCD TV (all other models)
- Outside speakers*
- Black tank flush*
- Electric Awning*
- E-Z Camp Cougar remote*
- Entertainment storage hook-up (FW only)*
- Outside LP quick connect*
- Radial tires*
- Polar package*
- Big Mountain Package (8 cu. ft. refrigerator, 16" wheels, shock absorbers) (Bed-slide FW only)
- Slide in/out bike storage rack (except 320SRX)
- Air mattress sofa with storage
- Super sofa with air mattress and recliner (320 only)
- Swivel rocker (244/276/291/292/318/25RLSWE/27RLSWE/278/326/29FKWE/30RKSWE)
- Second swivel rocker
- Free standing dinette
- 15,000 BTU A/C (West Coast Option Only)

*Mandatory Option

See us for a complete list of features and available options.

All standard features and specifications are subject to change.