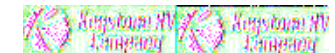
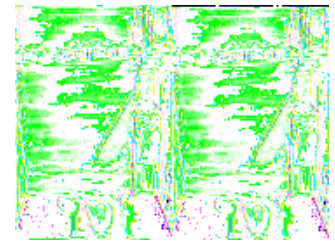
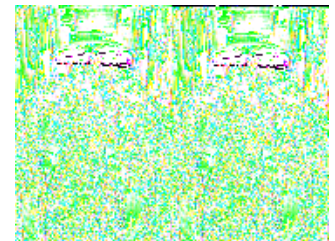
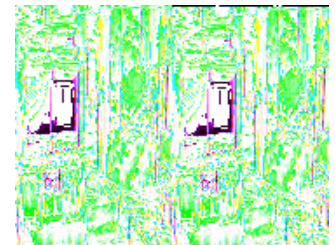
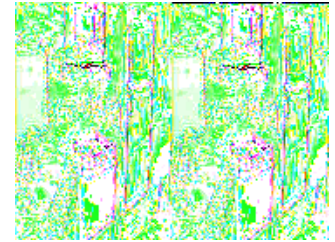
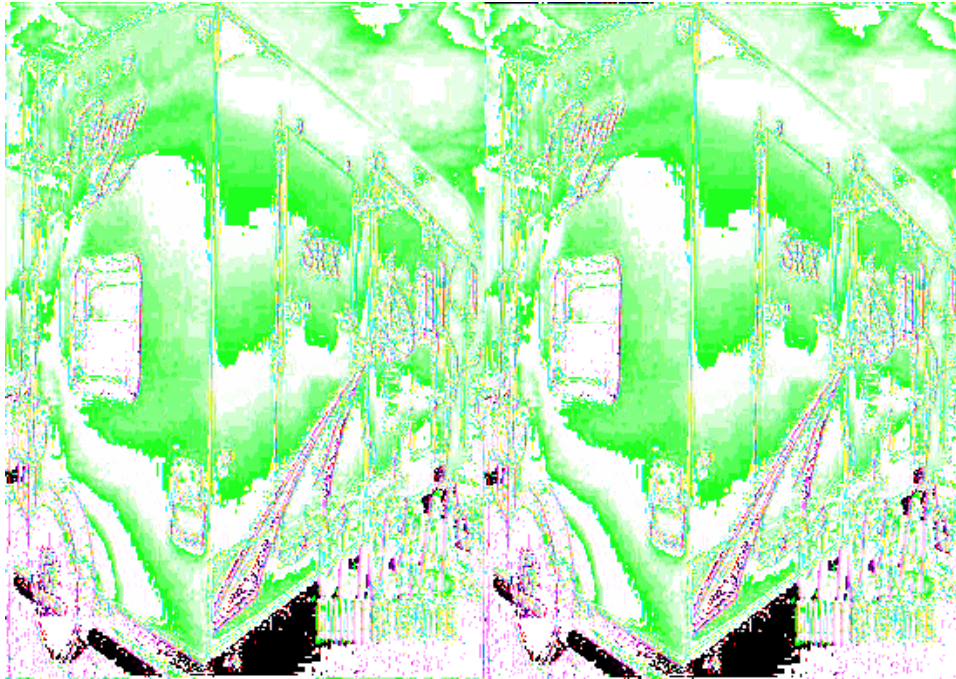


## Keystone RV Cougar Toy Hauler Fifth Wheels

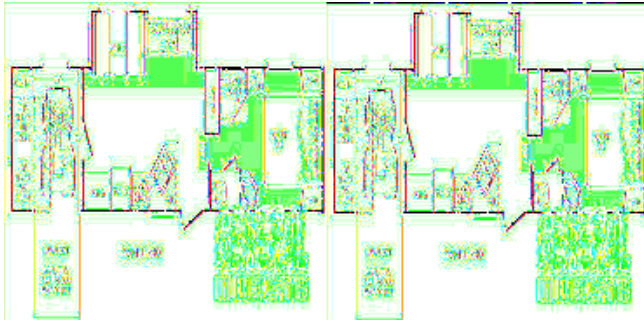


The ever-popular Cougar travel trailers and fifth wheels by Keystone are where luxury and lightweight meet. The Cougar models carry features that you and your family will love. From spacious interiors, to luxury baths, to bunkhouses that can't be beat - you definitely get more for your money with a Cougar.

Select from three beautiful fabric decors to make this a travel home that reflects your own personal taste and style. Pick the options that will make life away from home as comfortable as possible and then you'll be ready to select your next adventure. For the fifth wheel Cougar buyers you'll be telling all your friends about the patent pending Hitch Vision. With the specially designed front cap, the turning radius will be significantly improved and you'll be able to handle tight parking maneuvers even when attached to a short bed pick-up truck.

So if you are looking for quality and want to be the first on your block with something different, the Cougar travel trailers and fifth wheels from Keystone were designed with you in mind. Get your Cougar today!

## 2009 Cougar 310SRX



Single Slide Toy Hauler Fifth Wheel w/Rear Cargo Area, Side Ramp Door, Rear Flip Up Bunks w/Lower Oversized, Closet, Wall w/Door Separating Cargo Area From Living Area, Booth Dinette & Sofa Slideout, Pantry, Refrig., 3 Burner Range, Double Kitchen Sink, Overhead Cabinets, LCD TV, Step Up Bed/Bath Area, Private Toilet Area, Angle Shower, Lav., TV Shelf, Front Queen Bed w/Wardrobes and Much More.

Cougar 310SRX Specifications

Specification	Description
Length	35'4"
Width	8'0"
Height	12'0"
Hitch Weight	1,660 lbs
Dry Weight	8,420 lbs
Cargo Weight	3,400 lbs
Fresh Water Capacity	60 gals
Grey Water Capacity	76 gals
Black Water Capacity	38 gals
Furnace BTU	30,000
Sleeps	7
Tire Size	225/75R15D
Slides	1
Interior Color	Autumn Night, Bayleaf & Desert Sunset

## 2009 Cougar 320SRX



Double Slide Cougar Fifth Wheel Toy Hauler w/Rear Side 60" Wide Ramp Door w/Adj. Mounts, 2-28" Flip Up Bunks & Wardrobe in Cargo Area, Pantry, Refrigerator, 3 Burner Range, Double Kitchen Sink w/Overhead Cabinets, 32" LCD TV w/Swing Arm, L-Shaped Sofa/Recliner Slideout w/Air Mattress & Storage Below, Table w/Second Table Available, Corner Linen Cabinet, Closet, Angle Shower, Lav., Toilet, Front Queen Bed Slideout, Wardrobe w/TV Shelf, Window Seat w/Storage, Full Height Wardrobes & Much More!

Cougar 320SRX Specifications

Specification	Description
Length	35'3"
Width	8'0"
Height	12'0"
Hitch Weight	1,955 lbs
Dry Weight	9,125 lbs
Cargo Weight	2,990 lbs
Fresh Water Capacity	60 gals
Grey Water Capacity	76 gals
Black Water Capacity	38 gals
Furnace BTU	30,000
Sleeps	6
Tire Size	225/75R15D
Slides	2
Interior Color	Autumn Night, Bayleaf & Desert Sunset

# Cougar Features:

## Standard Features (2009)

### Construction

- One-piece EPDM rubber roof membrane with 12 year warranty
- Radius roof transition molding
- 3/8" roof decking
- 5" fabricated rafters on 16" centers
- Fiberglass insulation
- Ceiling decking Luan backer
- Vinyl ceiling panel
- Triple insulated, foam-core air conditioning duct
- Hitch Vision (Patent Pending)
- Gel-coated Filon fiberglass
- 1/8" Luan board
- Solid block insulating foam (R- 14, Roof-R-9, Sidewalls)
- Interior decorator board
- 2" welded aluminum wall studs
- Electro-galvanized sheet (EGS) metal backing strips
- Easy access adjustable snap jack pins
- Increased turning radius
- Tinted safety glass windows
- Docking lights
- Ultra-lube axles

### Cougar Eastern & Western Region Models

- 5-sided aluminum construction
- Residential porcelain toilet with foot pedal
- Ultra lube hubs on axles (all models)
- Snap jack pins (all Fifth Wheels)
- All Fifth Wheel models under 12' exterior height (fit under your 12' door)
- 30,000 BTU furnace
- One-piece seamless rubber roof
- All windows in main slideout open

### "Camping In Style" Package

- Day and Night Shades
- Laundry chute
- Black trim safety glass windows  
(tinted to keep the sun out)
- Microwave oven with turn style
- A & E awning
- Aluminum framed sidewalls,  
floor, front and rear walls
- 13,500 BTU air conditioner
- Raised-panel cabinet doors

### Value Package

- True home CD/DVD system with speakers and separate zones (12-Volt compatible);
- MP3 player hookup on stereo
- Gas/electric water heater with quick recovery
- Residential tiled shower/tub surround
- TV antenna
- Cable hook-up
- Gel coated filon fiberglass
- Full walk-on roof
- Fiberglass walls
- Rear stabilizer jacks

### **Dry Camping Features**

- 12 volt stereo/I-pod compatible
- Large fresh, grey & black tanks on all models
- All slideout lights are 12 Volt
- Space for dual batteries
- Under 12' exterior height (on most models) to stay clear of low hanging lights
- Entire underbelly enclosed to keep debris off tanks, water lines, etc.

### **Options**

- 19" LCD TV (243, 268 and 301 only) (Western Region only)
- 32" LCD TV (all other models) (Western Region)
- 32" LCD TV (all other models)\* (Eastern Region)
- Outside speakers\*
- Black tank flush\*
- Entertainment storage hook-up (FW's only\*)
- Outside LP quick connect\*
- Radial tires\*
- Polar Package\*
- Slide in/out bike storage rack (except 300/310/320SRV) (Western Region)
- Slide in/out bike storage rack (except 1/2 ton series and 300/310/320SRV SRX models) (Eastern Region)
- Air mattress sofa with storage
- Super sofa with air mattress and recliner (316 and 320 only)
- Swivel rocker (244, 276, 291, 292, 318) Western Region
- Swivel rocker (276, 291, 292, 318 & 302) Eastern Region
- Second swivel rocker
- Free standing dinette

\*Mandatory Option

### **Convenience Package Western Region**

#### **Travel Trailers**

- Outside shower\*
- Residential refrigerator front\*
- Spare tire\*
- Front diamond plate\*

\*Mandatory Option

#### **Fifth Wheel**

- Outside shower

- Residential refrigerator front
- 16" spare tire
- Shock Absorbers\*\*
- Large refrigerator\*\*
- 15,000 BTU air conditioner\*\*

\*\*Mandatory Option 291, 292, 316, 318, 320 only

### **Convenience Package Eastern Region**

- Outside shower\*
- Residential refrigerator front\*
- 16" spare tire\*

\*Mandatory option

### **Safety Must-Haves**

- Manual backup on all main slideouts
- T-mold bulb seals on all slideouts to keep slider sweeps on your slideout (stays on in hot weather)
- LP sensor
- Smoke detector
- Fire extinguisher
- Carbon monoxide detector

**See us for a complete list of features and available options.**

**All standard features and specifications are subject to change.**