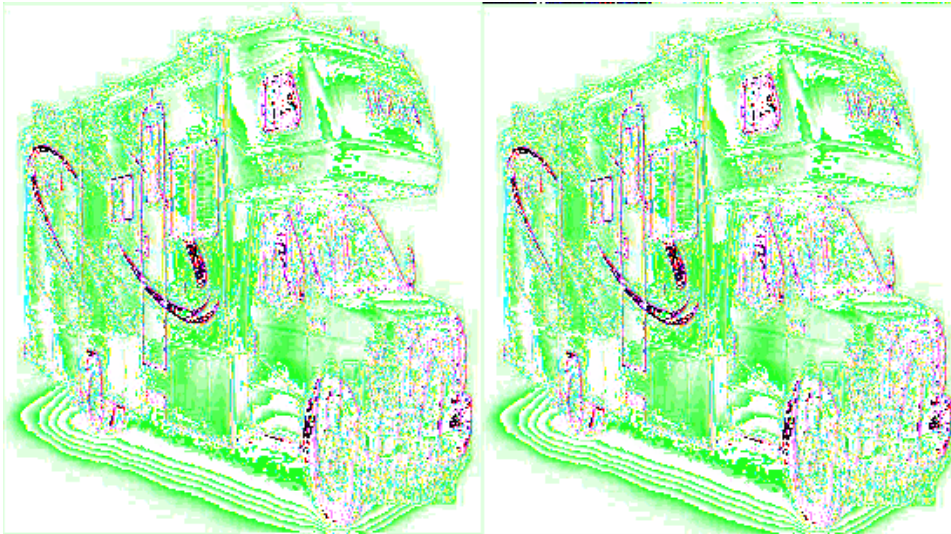


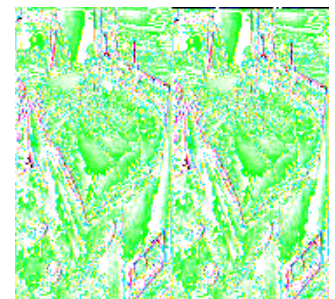
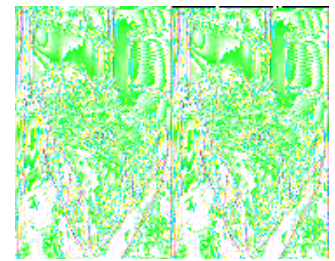
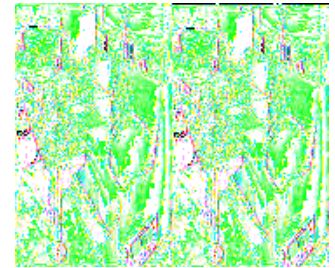
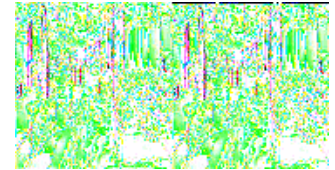
## Fleetwood RV Tioga Motor Home Class C



The Tioga class C motor home is all about spending family time together relaxing and sharing great times in a comfy atmosphere no matter where you've decided to go. The Tioga has a wide range of floorplans all designed to give everyone on board plenty of room to sleep, eat and just hang out.

The available slideouts on select models will maximize your living space. The furnishings are comfy, and the decor is just like home, and with smart safety features like car seat restraints you don't have to worry about keeping your loved ones safe while traveling. The galley in the Tioga is chock-full of practical features that make cooking up your families favorite meals a snap and getting things cleaned up easily so you can enjoy the adventure that awaits each day.

With a Fleetwood Tioga class C motorhome, you can have your campfire and be comfy too!



## 2009 Tioga 31M



Double Slide Class C Motorhome, Rear Queen Bed Slide Out w/Nightstands, Wardrobe, Side Aisle Bath w/Corner Shower, Lav., Toilet, Linen Cab., 3 Burner Range, Micro., Dbl. Kitchen Sink, Dbl. Door Refrig. & Booth Dinette w/Seatbelts Slide Out, Sofa w/Table, Cabover Bed, Opt. LCD TV, 14' Awning or Opt. 14' Electric Awning & More.

### Tioga 31M Specifications

Specification	Description
Length	32'6"
Width	8'6"
Height	11'7"
Interior Height	6'10"
Hitch Weight	5,000 lbs
Gross Weight	14,500 lbs
Axle Weight	14,500 lbs
Fresh Water Capacity	35 gals
Grey Water Capacity	37 gals
Black Water Capacity	37 gals
Furnace BTU	30,000
Sleeps	4
Engine	6.8L Triton V10
Chassis	Ford E450
Slides	2
Exterior Color	5 Color Choices Sage Mist/Canyon/Mocha
Interior Color	Java/Cyberspace Cafe

# Tioga Features:

## Standard Features (2009)

### Interior - Throughout

- Complete TuffPEX Plumbing System
- 12V Water Pump, Demand Operation
- 15,000 BTU Ducted Air Conditioner with Chill Grille
- 30,000 BTU Furnace, Wall Mounted Thermostat
- 6 Gallon Propane Water Heater with Electronic Ignition
- Arched Hardwood Overhead Cabinet Doors with Raised Panel and Hidden Hinges
- Auxiliary Battery with Disconnect Switch
- Carpet w/Pad & Vinyl Flooring in Galley, Lavy and Entry
- Deluxe Roller Bearing, Full Extension Drawer Guides and Transit-Ship Locks
- Water Pump Controller with On/Off Switches at Galley, Lavy and Service Compartment
- Quality Constructed Furniture by Flexsteel®
- Water Heater Bypass Valve Fresh Water System Winterization
- Central Monitor Panel
- GFI Circuit Protection
- AC/DC Load Center with 12V Converter/Battery Charger

### Driver Convenience

- 3 Point Seat Belts at Driver and Front Passenger Seats
- In-Dash AM/FM/Radio with CD Player and 4 Speakers
- Power Windows and Door Locks
- 54" x 80" Cabover Bed with Privacy Curtain, Roof Vent and Sliding Side Windows
- Cabover Bunk Ladder
- Driver/Front Passenger Air Bag Supplemental Restraint System
- Cockpit Area with Tilt Wheel, Cruise Control, Dome Light, Beverage Cup Holders, Map Pocket
- Auxiliary Emergency Start Assist Switch on Dash

### Living Room

- Ceiling Lights with Wall Switches (Entry and Bath)
- Day/Night Pleated Shades
- Dinette with 2 Cup Holders, Convertible for Sleeping
- Sofa Bed with Armrests (Select Models)
- Swivel Base Lounge Chair with Dual Lock Position (26J)

### Galley

- Laminate Countertops with Corian® Edge
- 3 Burner Range w/High Output/Piezo Ignitor and Oven
- Decor Wall Border
- Dometic® 6 cu.ft. Refrigerator/Freezer
- Real Wood Drawers
- Flip-Up Countertop Extension (Select Models)
- Kitchen Convenience Package: Spice Rack, Paper Towel Holder, Sink Cover/Cutting Board and Silverware Drawer
- Microwave Oven with Electronic Touch Pad
- Convection Microwave Oven (Select Models)

- Raised Panel Refrigerator Inserts
- Rangehood with Light and Fan
- Residential Size Double Bowl Sink with Single Lever Faucet
- Whole Coach Water Filtration System
- Cook Top Cover

### **Bedroom**

- Bedspread with Reverse Pillow Shams
- Night Pleated Shades
- Halogen Reading Lights
- Queen Bed w/Innerspring Mattress

### **Bathroom**

- Laminate Countertops with Corian® Edge
- Bath Door with Residential Passage Lock and Towel Bars
- China Bowl Toilet with Hand Sprayer
- Medicine Cabinet with Wood Construction
- Shower Head with Flexible Hose Extension
- Skylight/Roof Vent with 12V Fan
- Wall Mounted Mirror (Select Models)
- Molded ABS Shower/Tub with Surround
- Residential Style Metal Faucet with Large Sink
- Glass Shower Door Enclosure (Select Models)
- Folding Shower Door Enclosure (Select Models)
- Shower Curtain (26J)

### **Safety/Convenience**

- 10 ABC Fire Extinguisher
- Carbon Monoxide Detector/Alarm
- Exterior & Interior Entry Assist Handle
- Propane Detector/Alarm
- Smoke Detector/Alarm
- Multiple Seatbelt Locations

### **Exterior - Throughout**

- High Gloss Tuff-Coat® Smooth Fiberglass
- Outstanding Exterior Graphics and Styling
- Onan® 4.0kW Microquiet Generator
- Large 1" (Inside Diameter) Water Tank Drain
- Rear Ladder
- Aluminum Basement Truss System
- Utility Compartment with Exterior Shower and Holding Tank Dump Valves
- EZ Glide® Slide-Out Room and Compartment (Select Models)
- Debris Awning Above All Slide-Out Rooms
- Trailer Hitch with 7 Pin Electrical Hook-Up
- Dual 6V Deep Cycle Auxiliary Batteries
- Rear Fuel Fill
- Stainless Steel Wheel Liners
- Full Size Spare Tire with Carrier (26J)
- Full Size Spare Tire (Select Models)
- Patio Awning

- Toilet Tank San-T-Flush™ System

## Body Structure

- Vacu-bond® Hull Lamination Process
- Vacu-bond® Floor
- Royal Tuff-Ply Radius Roof with Ducted A/C
- Sidewalls Framed with 1-1/2" Aluminum Tubing
- Corrosion Resistant Aluminum Tube Hull Framing
- Molded Rear Wheel Trim Flares
- Molded Rear Wall/Ceiling Transition Trim
- Steel Powder Coated Rear Bumper
- Heated Holding Tanks in Basement Compartments
- One-Piece Molded Fiberglass Front End Cap
- 26" Wide Radius Corner Entry Door w/Window
- Full Basement Exterior

## Safety/Convenience

- 30 Amp, 30' Power Cord, Compartment Storage
- AC Duplex GFI Receptacle on Patio Side
- Breakaway Side Mirrors with Power Adjust and Heat Control
- Amber Porch Light with Interior Switch
- Automotive Safety Glass
- Entry Door with Screen Door and Deadbolt Lock
- High Mounted Large Taillights
- Hydraulic 4 Wheel Disk Brakes with 4 Wheel Anti-Lock Brakes
- Power Electric Step
- Radius Tinted Windows

## Storage

- Molded Cross Link Polyethylene Battery Compartment Container and Lid
- Insulated Locking Luggage Doors with Thumb Latch

## Options

### Interior

- 15,000 BTU A/C with Heat Pump
- Linoleum Throughout
- Custom Dash Appliqués
- Cabover Entertainment System: 32" LCD TV w/Home Theater
- 19" LCD Wide-screen TV with Remote and DVD Player
- Satellite Radio
- Power Roof Fan-Tastic® Vent Fan
- Glass Shower Door Enclosure (Select Models)
- 15" LCD TV (Bedroom)

### Exterior

- Exterior Entertainment Center with AM/FM/CD Player and Auxiliary Speaker, Coax Cable and 12V/110 Receptacles (Except 26J)
- Electric Patio Awning
- Dual Pane Windows

- Rear Vision Camera
- Auto Locating Satellite Dish
- Full Body Paint
- One-Piece Molded Fiberglass Front End Cap
- Full Body Paint Options for that Custom, High-End Luxury Look
- 3 Interior Decors and 2 Wood Choices Provide 6 Different Interior Looks Tailored to You
- 3 Floor Plans from 26' to 31' with Single or Double Slide-Outs to Suit Your RV Lifestyle
- Vacu-bond® Walls with Smooth High Gloss Exterior Tuff-Coat® Fiberglass
- Extended Season Camping with Enclosed/Heated Water and Holding Tanks

**See us for a complete list of features & available options.**

**All features and specifications are subject to change.**