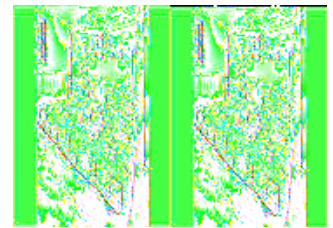
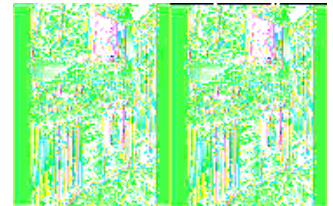
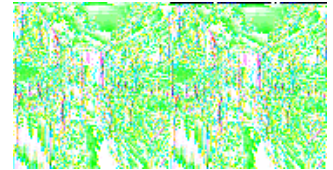
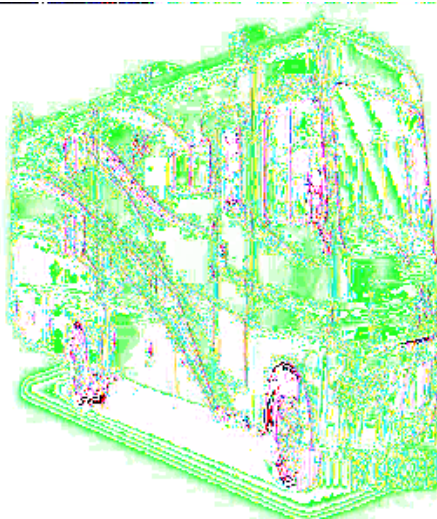
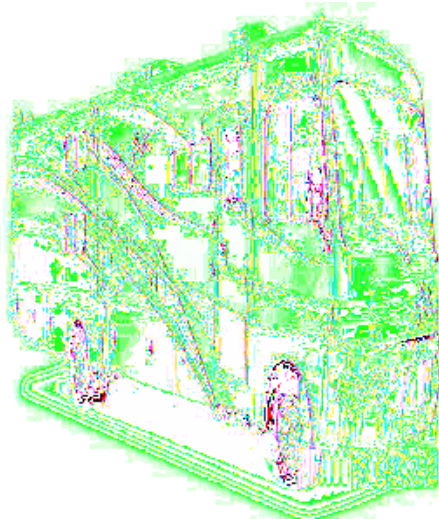


## Fleetwood RV Fiesta Motor Home Class A



Begin making memories by the mile in a Fiesta Class A motor home by Fleetwood. In this wonderful coach reaching your destination is half the fun. The Fiesta provides your family with all the amenities you need when you are away from home starting with a great coordinating look on both the inside and out.

With a full functioning galley that allows you to cook your families favorite meals to a roomy bathroom including a shower with glass door. The bedroom features a queen or optional king-size innerspring mattress with plush comforter for a relaxing nights rest and a residential size wardrobe and dresser with room for all of your things. Fleetwood also offers a floorplan that has a set of bunk beds that provide a cozy place to sleep or hang out, which is great for the kids. Each bunkmate can have their own optional flip-down TV screen with inputs for portable DVD or video game players.

So if adventure is calling your name, give yourself the freedom to answer that call with a Fiesta Class A motor home by Fleetwood today!

## 2010 Fiesta 34B

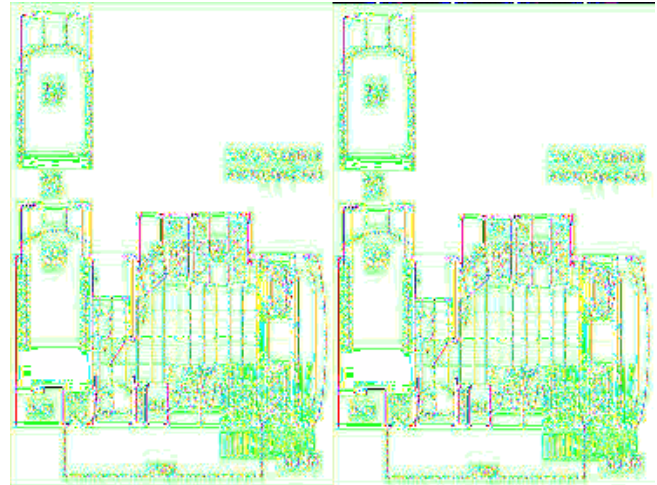


Triple Slide Fiesta Bunkhouse Class A by Fleetwood, Rear Queen Bed or Opt. King Slide w/Nightstands & Shelves, Slide Out Wardrobe/Dresser/Opt. TV & Bunk Beds or Opt. Dual Wardrobes to Replace Bunk Beds, Storage Cabinet, Pantry, Refrig., 3 Burner Range w/Micro., Dbl. Kitchen Sink, Sofa Bed & Booth Dinette Slide, LCD TV, Bath w/Angle Shower, Vanity w/Sink, Toilet & Much More. Shown w/Ford 22K Specifications. Ford 20K & Workhorse Available.

Fiesta 34B Specifications

Specification	Description
Length	35'7"
Width	8'6"
Height	12'3"
Interior Height	6'7"
Hitch Weight	5,000 lbs
Gross Weight	20,500 lbs
Axle Weight	20,500 lbs
Fresh Water Capacity	50 gals
Grey Water Capacity	40 gals
Black Water Capacity	30 gals
Furnace BTU	34,000
Sleeps	7
Engine	6.8L Triton V-10
Chassis	Ford
Tire Size	19.5"
Slides	3
Exterior Color	Cabernet, Lake, Pebble Beach

## 2009 Fiesta 29VS



Fiesta Class A Motor Home w/Rear Queen Bed Slide Out or Opt. King Bed, Wardrobe, Dresser w/Opt. TV Above, Nightstands/Shelf, Vanity w/Sink, Private Toilet & Shower Area, Double Kitchen Sink/3 Burner Range w/Microwave & Booth Dinette Slideout, Sofa Sleeper, Refrigerator, Pantry, 20' Awning, Choice of Engine, Chassis & GVWR for Ford & More! Shown w/Ford 22K Specifications. Ford 20K & Workhorse Available.

Fiesta 29VS Specifications

Specification	Description
Length	30'7"
Width	8'6"
Height	12'3"
Interior Height	6'7"
Hitch Weight	5,000 lbs
Gross Weight	20,500 lbs
Axle Weight	20,500 lbs
Fresh Water Capacity	50 gals
Grey Water Capacity	40 gals
Black Water Capacity	30 gals
Furnace BTU	34,000
Sleeps	5
Engine	6.8L Triton V-10
Chassis	Ford
Tire Size	19.5"
Slides	2
Exterior Color	Cabernet, Lake, Pebble Beach
Fuel Type	Gas

## 2009 Fiesta 33L



Double Slide Fiesta Class A Coach w/Rear Queen or Opt. King Bed Slide Out, Nightstands/Shelves, Wardrobe, Dresser w/Opt. TV, Corner Storage Cabinet, Side Aisle Bath w/Angle Shower, Vanity & Toilet, LCD TV in Living Area, Slide Out Booth Dinette & Sofa Bed w/Shelf Above, Double Kitchen Sink, 3 Burner Range w/Microwave, Refrigerator, Pantry and More! Choice of Engine, Chassis & GVWR on Ford, Shown w/Ford 22K Specifications, Ford 20K & Workhorse Available.

### Fiesta 33L Specifications

Specification	Description
Length	34'7"
Width	8'6"
Height	12'3"
Interior Height	6'7"
Hitch Weight	5,000 lbs
Gross Weight	20,500 lbs
Axle Weight	20,500 lbs
Fresh Water Capacity	50 gals
Grey Water Capacity	40 gals
Black Water Capacity	30 gals
Furnace BTU	34,000
Sleeps	5
Engine	6.8L Triton V-10
Chassis	Ford
Tire Size	19.5"
Slides	2
Exterior Color	Cabernet, Lake, Pebble Beach
Fuel Type	Gas

# **Fiesta Features:**

## **Standard Features (2010)**

### **Interior - Throughout**

- 120V/12V AC/DC Converter
- 15,000 BTU Ducted Air Conditioner
- 3 Interior Decors
- 34,000 BTU Furnace
- 6 Gallon Quick-Recovery Water Heater w/Direct Spark Ignition
- Automotive A/C Heater Combo
- Battery Disconnect System
- Central Electrical Panel w/Charger
- Deluxe Roller Bearing, Full Extension Drawer Guides
- Energy Management System
- Hidden Cabinet Door Hinges
- On Demand Water Pump w/Filter
- Radius Edged Cabinet Doors and Drawer Fronts
- Systems Monitor Panel
- TuffPEX Plumbing System
- Wall Mounted Heat Registers
- Water Heater Bypass

### **Driver Convenience**

- 12V Power Jack
- 3 Point Seat Belts at Driver & Front Passenger Seats
- AM/FM Radio w/CD & Electronic Tuning
- Auxiliary Start Circuit
- Cruise Control
- Double Swivel Sun Visors w/Map Pockets
- Flexsteel Driver Captain's Chair w/Reclining Back/Slide Controls
- Flexsteel Passenger Chair w/Reclining Back/Slide Controls/Footrest/Adjustable Armrest
- Intermittent Wiper Control
- Radio Switch Main/Auxiliary Power
- Telephone Jack
- Tilt Steering Wheel

### **Living Room**

- 32" LCD HDTV Mid-Coach Location
- Day/Night Pleated Shades
- Video Control Box
- Vinyl Floor Covering in Lavy/Galley/Entry

### **Bathroom**

- Glass Shower Door
- Medicine Cabinet w/Adjustable Shelves
- Molded Acrylic Shower w/Surround
- Porcelain Marine Toilet

- Power Bath Vent
- Skylight in Tub/Shower
- Vanity Lights

### **Galley**

- 3 Burner Range w/16" Oven
- 30" Microwave
- 6 cu. ft. Dometic Refrigerator
- Coordinated Cabinet Hardware
- Fan-Tastic Power Roof Vent
- High Rise Faucet
- Large Stainless Steel Double Sink
- Wood Drawer Construction

### **Bedroom**

- Adjustable Reading Lights
- Innerspring Mattress
- Rear TV Receptacle
- TV Shelf w/Cable Jack (TV not included)
- Wardrobe w/Mirrored Sliding Doors

### **Safety/Conveniences**

- 10 ABC Fire Extinguisher
- Carbon Monoxide Detector/Alarm
- Child Safety Tether
- Entry Grab Handle
- Multiple Seatbelt Locations
- Propane Detector/Alarm
- Smoke Detector/Alarm

### **Exterior - Throughout**

- 3 Colorway Graphics to Match Decor
- 30 Amp Service
- 4 Point Automatic Levelers
- 4.0 kW Onan MicroQuiet Generator
- ABS Front /Rear Wheel Well Trims
- Amber Porch Light
- Awning Rail/Drip Molding (Both Sides)
- Dometic Patio Awning
- Dual 6V Deep Cycle 217 Amp Auxiliary Batteries
- Exterior Wash Unit
- Full Basement Configuration
- Power/Heated Rear View Mirror
- Radius Entry Door
- Roof Ladder
- TV Antenna w/Signal Booster

### **Body Structure**

- Aluminum Interlocking Floor/Wall/Ceiling Framing
- Fiberglass Front/Rear Cap

- One-Piece Royal Tuff-Ply Radius Roof
- Power Platform Plus Construction (Fleetwood Exclusive)
- Vacu-Bond Floor and Ceiling
- Vacu-bond Walls w/Smooth High Gloss Exterior Tuff-Coat Fiberglass
- Windshield Bonded to Fiberglass Front Cap

### **Automotive**

- 19.5" Stainless Steel Wheel Simulators
- 5,000 lb. Towing Capacity
- Halogen Headlights w/Polycarbonate Lens
- Rear Fuel Fill
- Trailer Hitch w/7 Pin Electrical Hook-Up

### **Storage**

- Continuous One-Piece Compartment Bulb Seal
- Insulated Side-Swing Luggage Doors
- Large, Exterior Storage Compartment
- Lighted Luggage Compartments
- Rotomolded Polyethylene Luggage Compartments

### **Safety/Convenience**

- Automotive Safety Glass
- Daytime Running Lights
- Deadbolt Latch on Entry Door
- Dual Battery Charge Control
- High Mounted Large Taillights
- Hydraulic 4 Wheel Disk Brakes w/4 Wheel Anti-Lock Brakes
- Lighted Entry Assist Handle
- One-Piece Swing-Down Engine Access Door
- Park Cable Receptacle
- Patio Receptacle
- Power Entry Step

### **Options**

#### **Interior - Throughout**

- 19" LCD HDTV in Bedroom
- 8 cu. ft. Dometic Refrigerator
- DVD Player
- King Bed (Select Models)
- Satellite Antenna
- Sirius Satellite Radio (6 Month Subscription Included)
- Wood Cabinet Doors w/Raised Panels

#### **Exterior - Throughout**

- 30 Amp EMS w/5.5kw Generator /Dual A/C
- 50 Amp EMS w/5.5kw Generator /Dual A/C
- Side Turn Signal Camera
- Spare Tire

## **Fleetwood Advantages**

- Exciting Floor Plans with Mid-Coach 32" LCD HDTV
- Interlocking Floor-to-Sidewall Construction for Improved Fit, Finish and Integrity
- Pass-Through Basement Storage with Side-Swing Doors for Easy Access
- Power Platform® Construction (Fleetwood Exclusive)
- Ultra High Gloss Fiberglass Walls for Striking Looks

**See us for a complete list of features and available options.**

**All features and specifications are subject to change.**