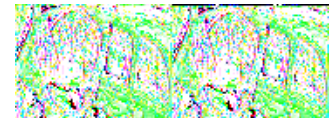
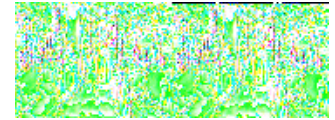


Damon Astoria Motor Home Class A - Diesel

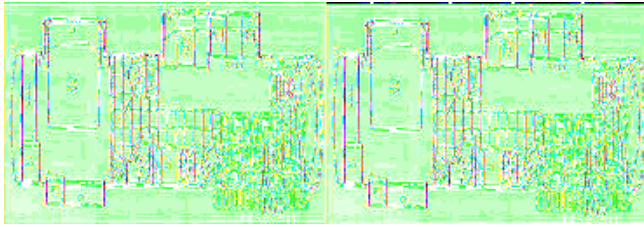


The Astoria class A diesel motorhome by Damon is bringing you more power and performance than ever before. Damon has given the Astoria a 6-speed 340-hp Cummins ISB diesel engine and super rugged Freightliner chassis. Climbing the tallest peaks in an Astoria is a piece of cake in any model you choose.

On the inside of this beauty you'll find abundant storage space, luxurious fabric decors to select from and the same amount of spaciousness and many amenities you would find in your own home. The distinctive styling and refined comfort features put Astoria in a class by itself. Everything is thoughtfully laid out to make living the RV life as convenient and trouble free as possible. And where the Astoria really shines, is in value. With all the power and performance, the luxury, the over-the-top amenities and features, Astoria is still remarkably affordable.

So make a class A choice and select an Astoria diesel motorhome from Damon for your next journey away from home!

2009 Astoria 3770

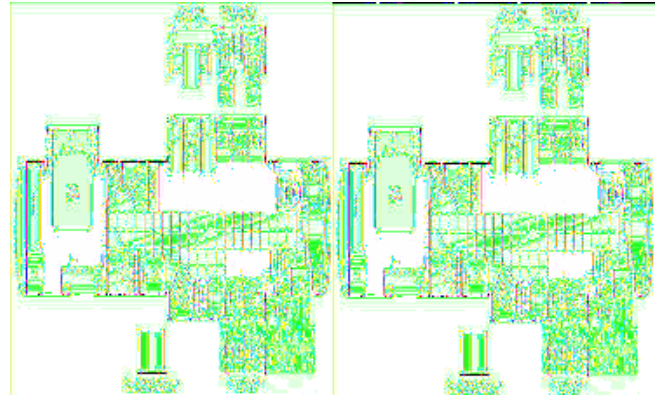


Triple Slide Motor Home w/Rear Bedroom, Slide Out King Bed, Linen, Wardrobe, 19" TV, Private Toilet Area, Lavatory, Corner Shower, Kitchen Sink, Pantry, Refrigerator or Opt. Side-by-Side Refrig., 3 Burner Range, Double Kitchen Sink, Sofa, Slide Out Booth Dinette or Opt. Buffet/Hide-a-Bed, 27" TV and More.

Astoria 3770 Specifications

Specification	Description
Length	38'10"
Width	8'5"
Height	12'7"
Hitch Weight	5,000 lbs
Dry Weight	22,888 lbs
Gross Weight	28,000 lbs
Fresh Water Capacity	95 gals
Grey Water Capacity	51 gals
Black Water Capacity	51 gals
Furnace BTU	34,000
Sleeps	4
Engine	Cummins 340hp
Chassis	Freightliner XC
Tire Size	22.5
Slides	3
Exterior Color	4 Color Choices
Interior Color	4 Color Choices

2009 Astoria 3772



Triple Slide Astoria Class A w/Rear Queen Bed Slideout, Wardrobe, Linen, Dresser, 19" LCD TV, Private Toilet Area, Lavatory, Corner Shower, Pantry, Refrig. Double Kitchen Sink/3 Burner Range w/Micro./Sofa Slideout or Opt. Side by Side Refrig. & Opt. Sofa Air Bed, 32" LCD TV, Booth Dinette & Sofa Air Bed Slideout or Opt. Buffet & Euro Chairs (2), Overhead Cabinets and More.

Astoria 3772 Specifications

Specification	Description
Length	38'10"
Width	8'5"
Height	12'7"
Hitch Weight	5,000 lbs
Gross Weight	28,000 lbs
Fresh Water Capacity	96 gals
Grey Water Capacity	51 gals
Black Water Capacity	51 gals
Furnace BTU	34,000
Sleeps	4
Engine	Cummins 340 Hp 6.7L
Chassis	Freightliner XC
Tire Size	22.5"
Slides	3
Exterior Color	Black Ice
Interior Color	Caribbean Bronze, Royal Crush & Tiger's Eye

Astoria Features:

Standard Features (2009)

Exterior

- Full body paint package including color coordinated slide room awnings
- Fog lights
- Wide body design
- Radius corner domed TPO roof
- Rear ladder
- Front and rear fiberglass caps
- Side-mounted manual patio awning
- Side-mounted manual front door awning
- Side-mounted awning over slide out
- Upgraded gel coat wall
- Locking aluminum exterior storage doors
- Three side-hinged compartment doors (passenger side)
- Custom-designed front entry door with screen
- Black-framed radius-corner windows
- Two patio lights (one on each side)
- Lighted storage compartments
- Full basement pass-through storage
- Gas pistons on exterior storage doors

Chassis

- Freightliner XC raised rail chassis
- 340-hp Cummins ISB 6.7L engine w/660 ft./lbs. torque
- In-block 750 watt engine heater
- Leece Neville 170-amp 12-volt alternator
- Allison MH-2500 automatic transmission 6 speed
- Exhaust brakes
- Full air brakes with auto slack adjusters front and rear
- Meritor anti-lock brakes
- Haldex Purest Air Plus heated air dryer
- Air-ride suspension
- Sachs shock absorbers, front and rear
- 22.5" radial tires
- Leveling jacks (hydraulic up & down)
- Stainless-steel wheel liners
- Front and rear mud flaps
- Full width stainless stone guard with DAMON letters
- Trailer hitch (5,000lb)
- Emergency start circuit
- Under-hood light
- Layer of neoprene vibration dampener
- Dual fuel fills (100 gallon)

Cockpit

- Molded ABS dash

- Electronically controlled dash air conditioning
- Premium AM/FM radio with in dash CD player
- 4 speaker sound
- Electronic cruise control
- Padded steering wheel
- Tilt/telescoping steering column
- Map lights
- Dash fans
- Air horns
- Tinted windshield
- Windshield privacy shade
- Manual windshield day/night privacy shade-full width
- Front mount power mirrors w/heat
- Nature's Alternative Leather reclining driver/passenger seats
- 6-way power driver seat
- 3-point, wall mounted seat belts
- Side storage cabinets above driver and passenger
- Back-up monitor system w/audio
- Drink holders
- Tile entryway

Living Area

- Decor fabric loveseat (N/A 3470 & 3778)
- Decor fabric sofa/airbed (driver or passenger side slideout) (S/O 3772)
- (2) Euro recliners (driver side slideout) (3778 only)
- Day/Night shades
- 100% nylon carpeting with stain treatment and padding
- 32" LCD TV with full-function remote w/ antenna, booster and jack (3772, 3786)
- 42" rear projection TV with full-function remote with antenna, booster and jack (3470, 3776, 3778)
- Video package (DVD player and control center)
- Soft touch padded vinyl ceiling
- Fluorescent lighting in living area only
- Living room pin-up lights
- Aisle lights

Kitchen

- Refrigerator: large flush mount double door w/raised panel hardwood front (glazed maple or cherry)
- Cooktop
- Solid surface range cover
- Mirrored backsplash behind stove
- 1.1 cu. ft space saver microwave/convection oven
- Sink cover
- Single lever faucet with sprayer
- Kitchen faucet water filter
- Pantry
- Solid surface counter top
- Solid wood raised panel cabinet doors throughout (glazed maple or cherry)
- Ceramic tile flooring
- Dream Dinette with wood edge table (N/A 3470 & 3786)
- Free standing dinette w/4 chairs (2 standard & 2 folding) (3786)
- U-Dinette (3470 only)
- Mini blind
- Fantastic power vent

- Wallpaper border

Bedroom

- Innerspring mattress
- Bedspread with throw pillows
- Designer headboard
- Bunk beds (3776 only)
- 20" LCD color TV
- 15" LCD color TV (bunk area) (3776 only)
- Lambrequin window treatments
- Night shades
- Mini blinds (always at bunk beds) (3776 only)
- Pin-up lights

Bathroom

- Full height shower with door
- Skylights in shower
- Power vent
- Front flush porcelain toilet with sprayer
- Wallpaper border
- Ceramic tile flooring

Utilities

- Air conditioner: 13,500 BTU ducted central (front & rear)
- Furnace: 34,000 BTU electronic ignition floor ducted
- Water heater: 10 gallon gas/electric w/ electric ignition w/XT technology (equals 16 gallons)
- Water heater by pass kit
- Generator: Onan 6.0 kW Quiet Diesel
- 80 AMP Converter
- 6-volt auxiliary batteries (4) on slide tray
- Battery disconnect
- 50-AMP, 120 volt service
- Exterior GFCI receptacle
- Enclosed heated potable and holding tanks
- Black tank flush
- 3-way valve for tank/city water fill
- Washer/dryer prep
- Telephone hookup
- Cable TV/satellite hookup
- Prepped for roof-mounted satellite dish
- Exterior shower
- Carbon monoxide, LP gas and smoke detectors
- Monitor panel with LPG readout

Options

- Invisible bra
- Heat pumps (2) with Low Profile A/C w/15,000 BTU
- Generator: Onan 8.0kW Quiet Diesel
- Nature's Alternative Leather sofa/airbed (driver side slideout) (n/a 3470)
- (2) Euro recliners (driver side slideout) (3772 only)
- Front mount power mirrors w/heat

- Refrigerator: four door w/ice maker
- Buffet w/additional storage and four chairs (2 fixed, 2 folding) (3772 & 3776 only)
- 2 folding chairs (available with buffet only)
- AM/FM stereo / CD player

Pacific Edition Package

- Color Matched Awnings (includes power patio and manual entry door)
- Electric Windshield Screen / Electric Privacy Shade
- Nature's Alternative 6-way Power Passenger Seat
- Upgrade Full Body Paint Packages: Choice of Almond Cream, Evening Auburn, Night Watch
- Home Theatre w/DVD/CD Player w/Surround Sound
- Nature's Alternative Leather Sofa / Air Bed

Please see us for a complete list of features and available options!

All standard features and specifications are subject to change.