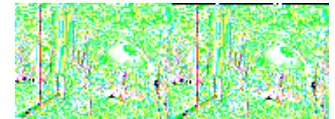
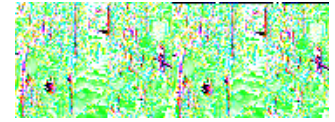
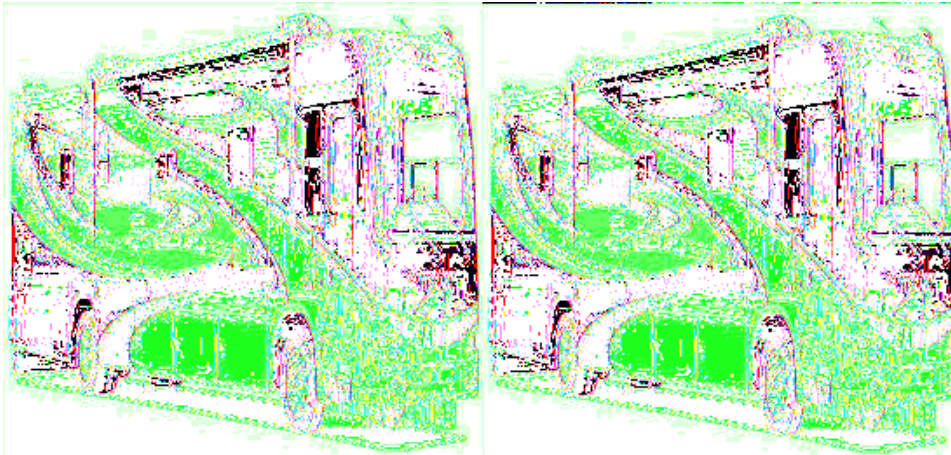


Damon Tuscany Motor Home Class A - Diesel



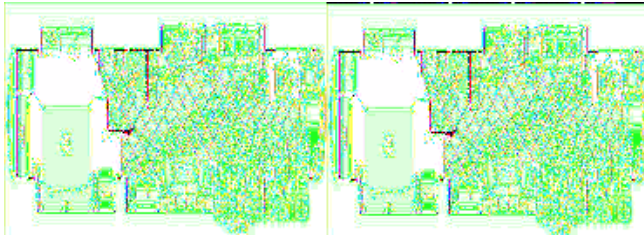
Discover America in one of Damon's Class A diesels, the Tuscany! This is one luxury motorhome that will bring you undeniable comfort at an affordable price.

The Tuscany brings you five great floorplans to choose from all ready to surround you in comfort and style. You'll enjoy the look of luxury with recessed halogen lighting and ceramic tile flooring. You'll be able to relax and enjoy the comfort of plush leather Euro recliners. Some models even have oversized driver and buddy chairs to make travel time up front more comfortable. Choose from three different coordinated interiors to make this motorhome feel even more like home. With an exterior paint package that is bold and contemporary you'll be drawing attention on the road as well as when you're parked for awhile.

Experience what Damon has to offer in the most affordable luxury motorhome on the market today, the Tuscany, and start seeing America like never before!



2009 Tuscany 4051

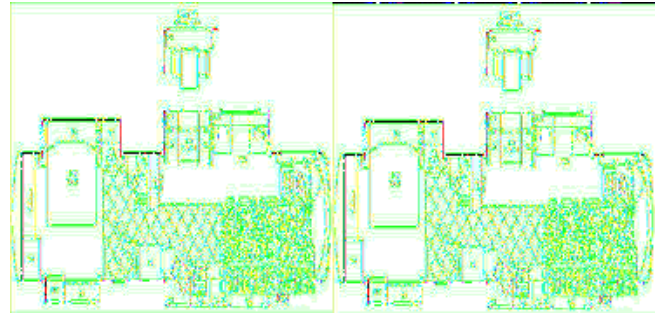


Quad Slide Class A Diesel Motor Home w/Rear King Bed/Nightstand/Wardrobe Slideout, Ward., Linen, 19" LCD TV/Dresser/Overhead Cab. Slideout, Bath w/Corner Shower, Toilet, Lav., Overhead Cab. & Dbl. Entry, Pantry/Refrig./U-Shaped Dinette/Sofa/Sofa Table/Seatbelts Slideout, Ext. Enter. Center w/32" LCD TV, 42" LCD TV, Dbl. Kitchen Sink/3 Burner Range w/Mico./Pull-Out Cabinet/Sofa Air Bed Slideout and Much More.

Tuscany 4051 Specifications

Specification	Description
Length	40'6"
Width	8'5"
Height	12'7"
Hitch Weight	10,000 lbs
Gross Weight	32,000 lbs
Fresh Water Capacity	96 gals
Grey Water Capacity	51 gals
Black Water Capacity	51 gals
Furnace BTU	40,000
Sleeps	5
Engine	Cummins ISC 360 Hp
Chassis	Freightliner
Tire Size	22.5"
Slides	4
Exterior Color	Enchanting Beige, Venice Beach & Timeless Bordeaux
Interior Color	Black Pearl, French Cognac & Tropic Breeze

2009 Tuscany 4054

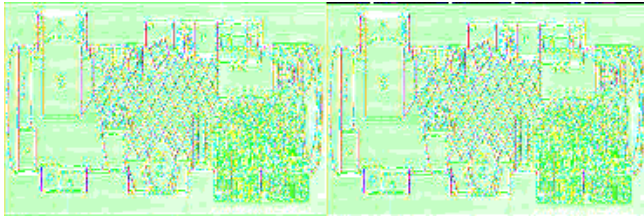


Quad Slide Tuscany Motor Home by Damon, Rear Slide Out King Bed, Wardrobe, Linen, 20" TV, Overhead Cabinets, Lavatory, Shower, Private Toilet Area, Refrigerator, Slide Out Double Kitchen Sink/3 Burner Range/Sofa Air Bed, Slide Out Booth Dinette/Sofa, Opt. Buffet, 42" TV, Overhead Cabinets and More

Tuscany 4054 Specifications

Specification	Description
Length	40'6"
Width	8'5"
Height	12'7"
Hitch Weight	10,000 lbs
Dry Weight	27,322 lbs
Gross Weight	32,000 lbs
Fresh Water Capacity	95 gals
Grey Water Capacity	51 gals
Black Water Capacity	51 gals
Furnace BTU	34,000
Sleeps	6
Engine	Cummins 360hp
Chassis	Freightliner
Tire Size	22.5
Slides	4
Exterior Color	Merlot Sand/Ebony Suede/Sunset Shadow
Interior Color	French Cognac/Driftwood Mocha/Metro Coin

2009 Tuscany 4055

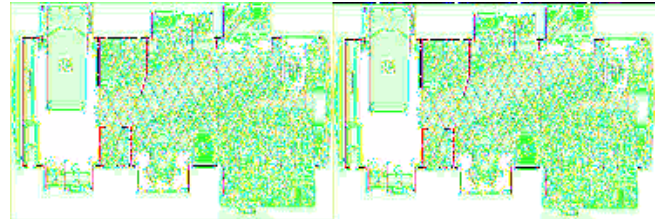


Five Slide Tuscany Motor Coach w/Rear Queen Bed Slide Out, Linen Closet, Wardrobe, Slide Out 19" TV/Overhead Cabinets, Angle Shower, Lav., Toilet, Round Free-Standing Dinette w/Chairs Slide Out, Double Kitchen Sink/3 Burner Range/Refrigerator/Hide-A-Bed Sofa Slide Out, 2nd Sofa Slide Out, 2 Flat Panel TV's 27" & 32" Viewable from Kitchen or Living Room Area and More.

Tuscany 4055 Specifications

Specification	Description
Length	40'6"
Width	8'5"
Height	12'7"
Hitch Weight	10,000 lbs
Dry Weight	27,220 lbs
Gross Weight	32,000 lbs
Fresh Water Capacity	95 gals
Grey Water Capacity	51 gals
Black Water Capacity	51 gals
Furnace BTU	34,000
Sleeps	4
Engine	Cummins 360hp
Chassis	Freightliner
Tire Size	22.5
Slides	5
Exterior Color	Merlot Sand/Ebony Suede/Sunset Shadow
Interior Color	French Cognac/Driftwood Mocha/Metro Coin

2009 Tuscany 4056

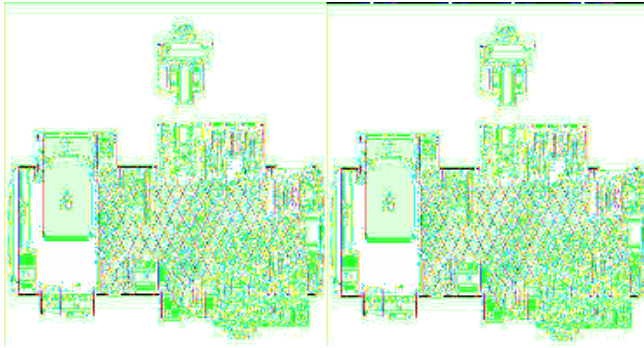


Tuscany Six Slide Motor Home w/Rear Queen Bed Slideout, Wardrobe, Linen, 19" TV/Overhead Cabinet Slideout, Corner Shower, Lavatory, Private Toilet Area, Slideout Free Standing Round Dinette, Slideout Double Kitchen Sink/3 Burner Range w/Micro./9" LCD TV DVD, Pull Out Counter/Cabinet, Refrig., Slideout Sofa Air Bed, Slide Out 42" LCD TV & Computer Desk, Ext. Ent. Center w/32" LCD TV and More.

Tuscany 4056 Specifications

Specification	Description
Length	40'6"
Width	8'5"
Height	12'7"
Hitch Weight	10,000 lbs
Gross Weight	32,000 lbs
Fresh Water Capacity	96 gals
Grey Water Capacity	51 gals
Black Water Capacity	51 gals
Furnace BTU	34,000
Sleeps	4
Engine	Cummins ISC 360 Hp
Chassis	Freightliner
Tire Size	22.5"
Slides	6
Exterior Color	Enchanting Beige, Venice Beach & Timeless Bordeaux
Interior Color	Black Pearl, French Cognac & Tropic Breeze

2009 Tuscany 4072

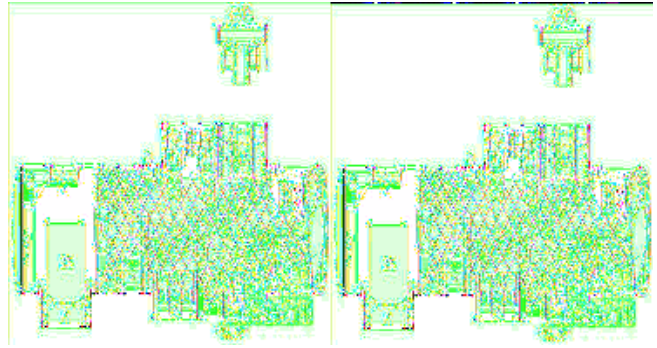


Quad Slide Tuscany Motor Home w/Rear King Bed Slideout w/Nightstands & Bath Sink w/Overhead, Wardrobe/Linen Cabinet, Slideout 19" LCD TV & Dresser, Private Toilet Area, Corner Shower, 42" LCD TV, Refrig., Dbl. Kitchen Sink, 3 Burner Range & Sofa Air Bed Slide, Booth Dinette & 2 Euro Recliners or Opt. Buffet w/Dinette IPO Booth Dinette & More!

Tuscany 4072 Specifications

Specification	Description
Length	40'6"
Width	8'5"
Height	12'7"
Hitch Weight	10,000 lbs
Gross Weight	32,000 lbs
Fresh Water Capacity	96 gals
Grey Water Capacity	51 gals
Black Water Capacity	51 gals
Furnace BTU	40,000
Sleeps	4
Engine	Cummins ISC 360 Hp
Chassis	Freightliner
Tire Size	22.5"
Slides	4
Exterior Color	Enchanting Beige, Venice Beach & Timeless Bordeaux
Interior Color	Black Pearl, French Cognac & Tropic Breeze

2009 Tuscany 4076



Triple Slide Tuscany Class A by Damon, Rear Queen Bed Slideout, Wardrobe, Dresser, 19" TV, Overhead Cabinets, Side Aisle Bath w/Linen Closet, Angle Shower, Lav., Glass Cabinet in Hall, 42" TV, Slideout Euro Recliners (2) & Booth Dinette or Opt. Buffet, Slideout Sofa Air Bed/Double Kitchen Sink/Counter Extension/3 Burner Range & Refrigerator, Exterior Ent. Center w/32" LCD TV and More.

Tuscany 4076 Specifications

Specification	Description
Length	40'6"
Width	8'5"
Height	12'7"
Hitch Weight	10,000 lbs
Gross Weight	32,000 lbs
Fresh Water Capacity	96 gals
Grey Water Capacity	51 gals
Black Water Capacity	51 gals
Furnace BTU	34,000
Sleeps	4
Engine	Cummins ISC 360 Hp
Chassis	Freightliner
Tire Size	22.5"
Slides	3
Exterior Color	Enchanting Beige, Venice Beach & Timeless Bordeaux
Interior Color	Black Pearl, French Cognac & Tropic Breeze

Tuscany Features:

Standard Features (2009)

Exterior

- Full-body paint package including color coordinated slideroom awning(s)
- Color-coordinated awning package including electric patio awning with remote control and wind sensor and manual entry door awning
- Fog lights
- Wide-body design
- Radius corner domed TPO roof
- Rear ladder
- Front and rear fiberglass caps
- Upgraded gelcoat wall
- Locking aluminum exterior storage doors
- Side-hinged compartment doors (passenger side)
- Black-framed, dual-pane radius corner windows
- Lighted storage compartments
- Full basement pass-through storage
- Exterior entertainment center with 32" LCD TV
- Gas pistons on exterior storage doors
- Invisible bra

Chassis

- Freightliner® XC raised-rail chassis
- 360-hp ISC Cummins® engine 1050 ft/lb torque
- In-block, 1000-watt engine heater
- Leece Neville 170 amp, 12 volt alternator
- Allison® MH-3000 automatic transmission– 6 speed
- Exhaust brake
- Full air brakes with auto slack adjuster's front and rear
- Meritor anti-lock brakes
- Haldex Purest Air Plus heated air dryer
- Air-ride suspension
- Sachs shock absorbers, front & rear
- 22.5" radial tires
- Leveling jacks
- Full-width stainless-steel stone guard with Damon letters stencil
- Trailer hitch (10,000 lbs.)
- Emergency start circuit
- Under hood light
- Layer of neoprene vibration dampener
- Dual fuel fills
- Aluminum wheels (set of 4)

Cockpit

- Molded ABS dash
- Electronically controlled dash air conditioning
- Digital touch-screen multi-media system w/DVD 5.1 Home Theater, 3-camera back-up color monitor, AM/FM/CD, MP3,

SD card reader, USB, Bluetooth, GPS navigation ready & satellite radio ready

- Electronic cruise control
- Padded steering wheel
- Tilt-telescoping steering column
- Map lights
- Dash fans
- Air horns
- Tinted One-piece windshield
- Electric windshield day/night privacy shade w/manual side shades - full width
- Front mount chrome power mirrors w/heat
- Ceramic tile flooring throughout
- Ultraleather reclining driver's seat with 6-way power
- Ultraleather oversized passenger seat with 6-way power and electric footrest
- 3 point, wall-mounted seat belts
- Side storage cabinets above driver and passenger
- Drink holders
- Electric step cover

Living Area

- Ultraleather sofa bed (passenger side) (4051 only)
- Two Euro recliners with coffee table and lamp (driver side slideout) (4072, 4076 & 4078)
- Décor fabric sofa/air bed (4051)
- Day/night shades
- 100% nylon carpeting with stain treatment and padding
- 42" LCD TV with full function remote and antenna, booster, and jack
- Soft touch padded vinyl ceiling
- Halogen lighting in living area only
- Aisle lights
- Ceramic tile flooring throughout

Kitchen

- Refrigerator: four-door with ice maker
- Refrigerator: raised-panel hardwood front (glazed maple or cherry)
- Cooktop
- Solid surface range cover
- 1.1 cu. ft. space saver microwave/convection oven
- Two solid surface sink covers
- Single lever faucet with sprayer
- Kitchen faucet water filter
- Solid surface countertops
- Solid wood cabinet doors throughout (glazed maple or cherry)
- Ceramic tile flooring throughout
- 9" LCD TV with integrated AM/FM/CD/DVD Player (4056)
- Dream Dinette with wood edge table (4072, 4076 & 4078)
- Freestanding dinette with 4 chairs (2 standard and 2 folding) (4056)
- U-Dinette (4051)
- Mini blind
- Fantastic® power vent with rain sensor and remote
- Wallpaper border

Bedroom

- Pillow top mattress

- Bedspread with throw pillows
- LCD color TV
- Lambrequin window treatments
- Day/night shades
- Pin-up lights
- AM/FM stereo /CD player /DVD Player

Bathroom

- Full height shower with door
- Skylight in shower
- Obscure glass window in private stool area (n/a 4076 & 4078)
- Power vent
- Foot flush porcelain toilet with sprayer
- Wallpaper border
- Ceramic tile flooring throughout

Utilities

- Air conditioner: Carrier® 13,500 BTU ducted central (front & rear)
- Furnace: 34,000 BTU electronic ignition (4056 and 4076)
- Furnace: (2) 20,000 BTU (4051, 4072 and 4078)
- Water heater: 10-gallon gas/electric with electronic ignition w/blending valve (equals 16 gal.)
- Water heater by-pass kit
- Generator: Onan® 8.0 kW Quiet Diesel™
- 2000-watt inverter/100-amp converter
- 6 volt auxiliary batteries (4)
- Battery disconnect
- 50-amp, 120-volt service
- Exterior GFCI receptacle
- Enclosed heated potable and holding tanks
- Black tank flush
- 3-Way valve for tank/city water fill
- Washer/dryer prep
- Cable TV/satellite hookup
- Exterior shower
- Carbon monoxide, LP gas and smoke detectors
- Monitor panel with LPG readout
- Central vacuum system w/toe kick dustpan

Options

- Color-coordinated window awnings (n/a 4056)
- Easy slide storage tray
- Heat pumps (2) with Low Profile A/C w/15,000 BTU
- Energy management system
- Kingdome automatic satellite dish
- GPS navigation system
- 3 burner range and oven IPO cooktop
- Buffet with additional storage and four chairs (two fixed and two folding)

See us for a complete list of features and available options.

All features and specifications are subject to change.



Brownstown 734-284-5500
Birch Run 989-624-700
Mt. Clemens 586-954-3600

Waterford 248-674-0346
Wayland/Grand Rapids 269-792-9118
Wixom 248-349-0900