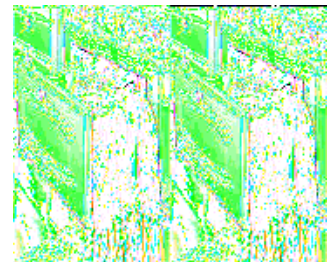
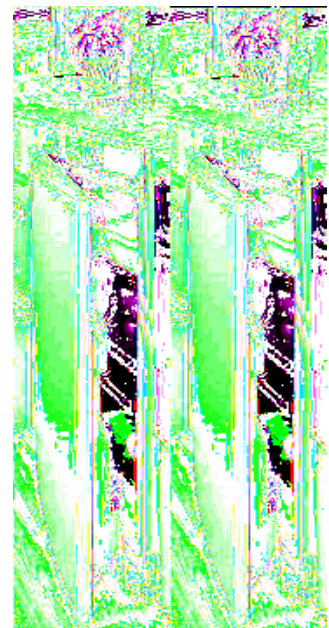
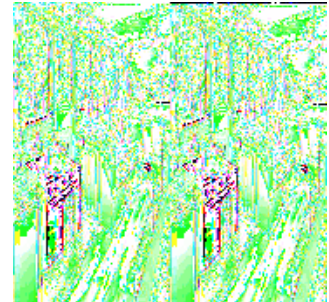
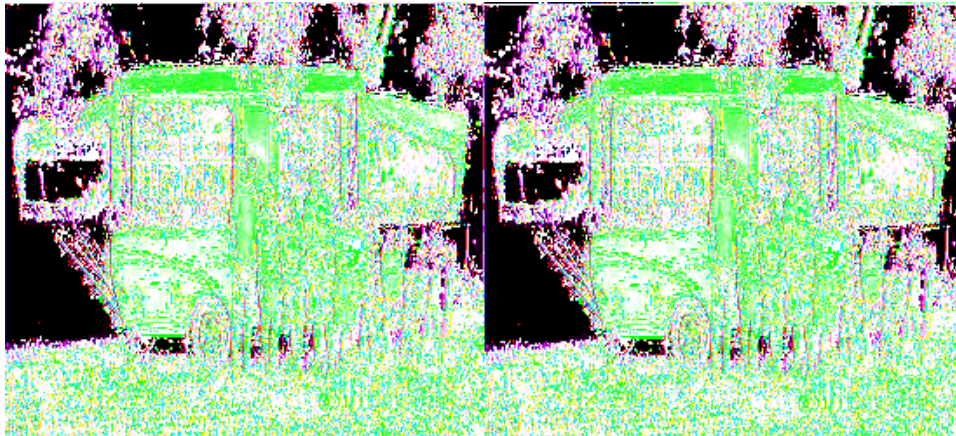
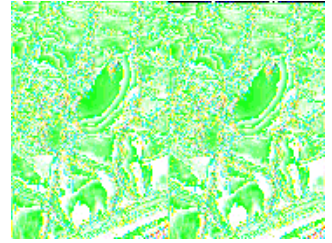


Starcraft Centennial Folding Pop-Up Campers

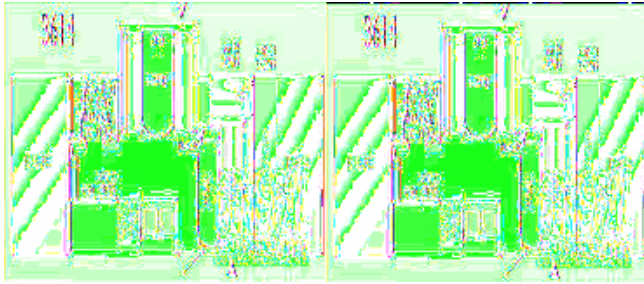


The Centennial folding camper by Starcraft is easy to tow and big on value! If you have a favorite camping spot and are ready to make the leap from sleeping on the ground to a lot more comfort, then take a close look at the Centennial. All you have to do is hitch up and you're ready to make your way to that favorite spot.

The Centennial comes with a complete galley and generous storage. Some of the features that are available include a slideout dinette, king and queen size bunk ends and toilet and shower facilities. Because the Centennial is so roomy, even if the weather doesn't cooperate, it's not a problem. Just get out some games, prepare some food in the galley or just relax on the 4" heated box spring mattresses (standard). With these features and more, it's no wonder that the Centennial by Starcraft is one of the most popular folding campers around. Get your Centennial folding camper today!



2010 Centennial 3614

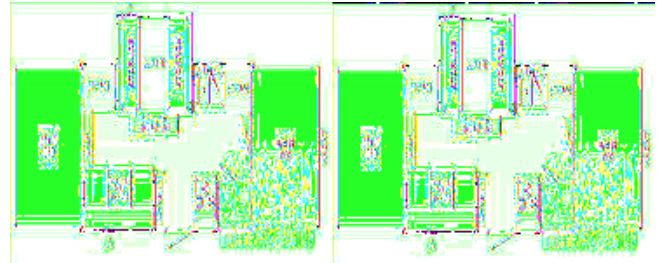


Centennial Folding Pop-Up Camper by Starcraft w/Front King & Rear Queen Tent End Beds, Hardwall Bath/Shower w/Cassette Toilet, Microwave, 3 Cu. Ft. Refrigerator, 3 Burner Stove/Oven, Double Kitchen Sink, Slideout Booth Dinette, Furnace, L-Shaped Sofa w/Table, Water Heater, Outside Shower, Exterior Storage and Much More!

Centennial 3614 Specifications

Specification	Description
Length	20'1"
Width	7'1"
Height	6'10"
Hitch Weight	315 lbs
Dry Weight	3,330 lbs
Gross Weight	4,550 lbs
Cargo Weight	1,220 lbs
Fresh Water Capacity	17 gals
Grey Water Capacity	8 gals
Black Water Capacity	5 gals
Furnace BTU	16,000
Sleeps	7
Tire Size	15"
Slides	1
Interior Color	Caramel

2009 Centennial 3610

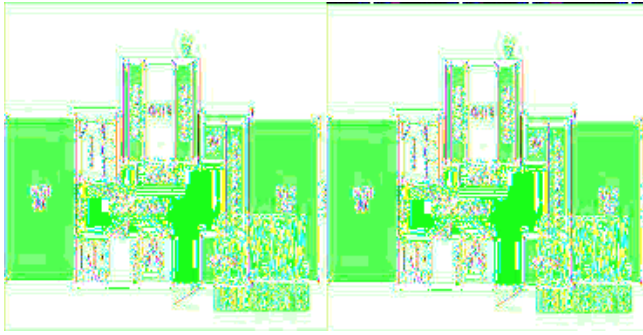


Single Slide Starcraft Centennial Folding Pop-Up Camper w/Two King Size Tent End Beds, Roll Over Sofa Storage w/End Table, Slideout Booth Dinette, Stor-A-Way Storage Steps, 3 Burner Cooktop, Double Kitchen Sink, Refrigerator, Plenty of Storage and More.

Centennial 3610 Specifications

Specification	Description
Length	17'11"
Width	7'2"
Interior Height	7'3"
Hitch Weight	491 lbs
Dry Weight	2,865 lbs
Gross Weight	3,750 lbs
Cargo Weight	636 lbs
Fresh Water Capacity	19 gals
Furnace BTU	16,000
Sleeps	7
Tire Size	14
Slides	1
Interior Color	Caramel w/Sierra Maple, Caramel w/Harmony White

2009 Centennial 3612

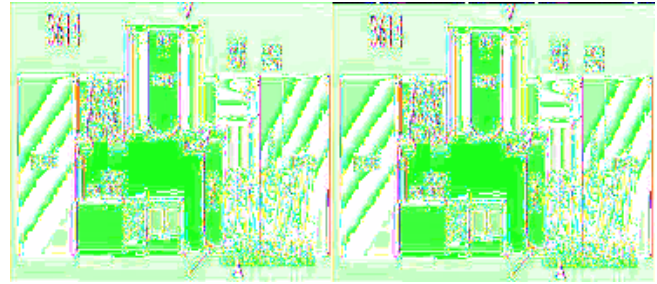


Starcraft Centennial Folding Pop-Up Camper w/Two King Size Tent End Beds, L-Shaped Bench Seat w/Storage Below, Booth Dinette Slideout w/Stor-A-Way Storage Step, Hard-Wall Shower, Double Kitchen Sink, Refrigerator, 3 Burner Cooktop, Plenty of Storage Space and More.

Centennial 3612 Specifications

Specification	Description
Length	17'11"
Width	7'2"
Interior Height	7'3"
Hitch Weight	326 lbs
Dry Weight	2,944 lbs
Gross Weight	3,750 lbs
Cargo Weight	557 lbs
Fresh Water Capacity	19 gals
Furnace BTU	16,000
Sleeps	7
Tire Size	14
Slides	1
Interior Color	Caramel w/Sierra Maple, Caramel w/Harmony White

2009 Centennial 3614



Centennial Folding Pop-Up Camper by Starcraft w/Front King & Rear Queen Tent End Beds, Hardwall Bath/Shower w/Cassette Toilet, Microwave, 3 Cu. Ft. Refrigerator, 3 Burner Stove/Oven, Double Kitchen Sink, Slideout Booth Dinette, Furnace, L-Shaped Sofa w/Table, Water Heater, Outside Shower, Exterior Storage and Much More!

Centennial 3614 Specifications

Specification	Description
Length	20'1"
Width	7'1"
Height	6'10"
Hitch Weight	315 lbs
Dry Weight	3,330 lbs
Gross Weight	4,550 lbs
Cargo Weight	1,220 lbs
Fresh Water Capacity	17 gals
Grey Water Capacity	8 gals
Black Water Capacity	5 gals
Furnace BTU	16,000
Sleeps	7
Tire Size	15"
Slides	1
Interior Color	Caramel

Centennial Features:

Standard Features

Exterior

- 110V G.F.C.I. protected exterior receptacle (Centennial & Starcraft)
- 12" C-range tires (816, 1019) (Starcraft)
- 13" C-range tires (1020, 1224) (Starcraft)
- 13" D-range tires (1223) (Starcraft)
- 14" x 14" roof vent
- 15" Aluminum rims (RT)
- 15" D-range tires (Centennial)
- 15" off-road Dunlop Mud Rover radial tires (RT)
- Aluminum exterior sidewalls (RT & Starcraft)
- Aqua Shield water-repellent sectionalized tent
- Automotive styling rear caps (Centennial & Starcraft)
- Bed bases are undercoated
- Bumper is welded tube powder coated white (Centennial)
- bumper made with welded steel construction (Starcraft)
- Cast aluminum 110V G.F.C.I. protected exterior receptacle (RT)
- Crank-down stabilizer jacks with sand pads
- Diamond-plate walls on rear (RT)
- Domed, fiberglass roof with no center seam (Centennial)
- Domed, fiberglass roof with no center seam and prepped for bike carrier (RT & Starcraft)
- Double entrance step (RT)
- D-rings (6) welded to front storage deck (RT)
- E-Coat protected frame
- Electric brakes (Centennial, RT & Starcraft - 1206 only)
- Entrance door access with roof lowered
- Entrance door caddy
- Entrance door is 1-piece construction
- Exterior entrance door storage with securing strap
- Exterior speakers, high-output marine grade (2) (RT)
- Extrusions for box top are painted (powder-coated) black with black corner caps
- E-Z Lube axles
- Floor is undercoated and constructed of edge sealed Structurewood
- Front ABS cap (Centennial)
- Front storage deck with expanded steel surface and aluminum deck railing (RT)
- Fully enclosed lifter system
- Lamilux 4000 fiberglass laminated sidewalls (Centennial)
- Leveling jacks and heavy-duty A-frame construction
- Lifter post covers integrated into tent
- Light in front trunk (Centennial & Starcraft)
- Mud flaps (RT)
- One-piece high-density polyethylene wheel wells
- Outside shower (Centennial & Starcraft (N/A 816
- Patio light with amber lens
- Prep wiring for battery
- Ramps/deck railing (dual use) with quick-connect deck attachment system (RT)
- Rear bumper made of 4" tubular steel (RT)
- Rounded wheel wells

- Rubber truck-type fenders (RT)
- Scratch resistant, embossed aluminum finish on exterior (RT)
- Scratch resistant, embossed aluminum finish on exterior (Starcraft)
- Self-storing screen door
- Self-storing step (Centennial & Starcraft)
- Shock absorbers (racing yellow) (RT)
- Silver wheel rims (Starcraft)
- Spare tire and tire carrier
- Storage compartment in front truck (Centennial & certain Starcraft models)
- Tent attachment velcros around entrance door
- ForFlex independent torsion axle suspension (Centennial & Starcraft)
- Vinyl spare tire cover
- Wide-body construction

Heat, Power & Water

- 12V electrical system with 20-amp, 110V converter
- 16,000 BTU furnace (Centennial)
- 17 gallon fresh water system with 12V demand pump
- 20 lb. propane gas bottle (Starcraft)
- 30 ft. 30 amp power cord
- Double 20 lb. propane gas bottles, with vinyl cover (Centennial & RT)
- Hook-up for city water
- Porta-potti storage cabinet (RT & Starcraft-certain models)
- Water heater bypass system

Interior

- 110V G.F.C.I protected interior receptacle
- 12V high-intensity lighting
- Automatic cut-off switch for interior lights
- Bar for hanging clothes (Centennial)
- Bed flaps that cover edge of bed
- Booth dinette
- Brushed nickel hardware
- Bunk-end fan lights (2) (Centennial & RT)
- Cable TV hookup with RG6 connection (Centennial)
- C-clamp connection on tent supports
- Coordinated furniture, designed and made by Starcraft
- Cup holders installed throughout
- Door pulls with roller catch
- Drawers are made of real wood and have nylon guides
- Floor-level courtesy lights (Centennial)
- Granite-look countertop
- Hard wall bath/shower with cassette toilet (Centennial)
- Heavy duty entrance door with securing latches
- Hinged dinette seat bases
- Mildew resistant aluminum ceiling
- Modern interior designed and made by Starcraft
- Non-sliding, 4" deep cushions for dinette with reversible EZ clean vinyl backs
- Powder-coated white bunk end bows with adjustable tension tent supports
- Prep for A/C accommodating all roof-mounted A/C's
- Privacy curtains for end-bunks
- Sierra Maple cabinetry (RT & Starcraft)
- Sofa (Certain models - Starcraft)

- SoftShade window shades and valances
- Tinted vinyl windows
- Vinyl flooring wall to wall

Kitchen

- 3-burner stove/oven with recessed stove ring (Centennial)
- 3-cu. ft. 3-way gas/electric refrigerator (110V/12V propane) (Centennial)
- 6 gallon water heater (Centennial & Starcraft - N/A 816)
- Acrylic sink and faucet
- Appliances are pre-plumbed for propane
- Carry-out dinette table
- Fluorescent light above sink (Centennial)
- Microwave oven (Centennial)
- Oversized oven (Centennial)
- Spice rack (Centennial & Starcraft)
- Stainless steel carryout stove (2-burner) (RT & Starcraft - certain models)
- Stove cover with wind defectors
- Tray for silverware (Centennial & Starcraft)

Safety

- 1200 lb. front deck capacity (RT)
- Break-away switch
- Carbon monoxide alarm
- Dual hitch safety chains
- Fire extinguisher
- Propane alarm

Customer Convenience Package

- Awning, Self-storing made by Starcraft
- Battery gauge (RT)
- Lights, Bunk-end fans (2) Starcraft
- Refrigerator, 2 cu. ft. , 3-way gas/electric (110V/12V Propane) (RT & Starcraft)
- Rims, Polished Aluminum, 7 spoke (Centennial)
- Solar prep (RT)
- Stereo, Multi-Media Sound System AM/FM/CD stereo with MP3 or iPod input jack and 2 speakers
- Water purification system

Options

- 14' deluxe screen room (Centennial)
- 16,000 BTU furnace with auto-ignition (RT & Starcraft)
- Bath/Shower option (RT & Starcraft)
- CSA Standards
- Deluxe screen room (RT & Starcraft)
- Electric brakes (Starcraft)
- Extra table with pedestal leg (Starcraft)
- Front storage box (RT)
- Heated bed mats (2)
- Hydraulic surge brakes (Centennial & Starcraft)
- Portable, outside gas grill
- Powered roof vent
- Stereo w/outside speakers

- U-Dinette (Starcraft)

See us for complete list of features, available options & warranty information!

All standard features and specifications are subject to change.