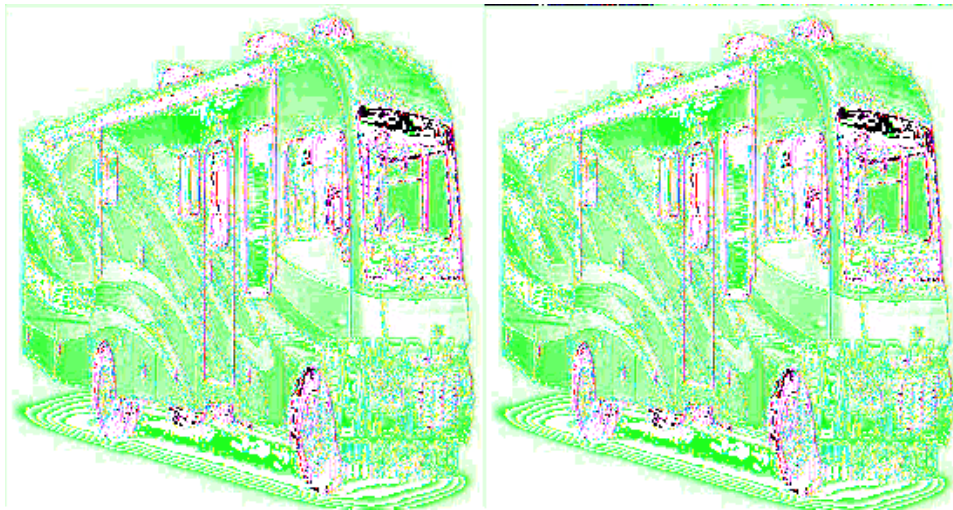


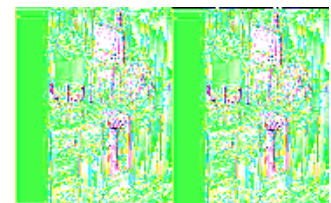
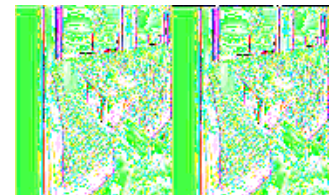
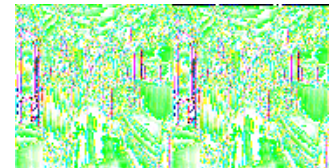
## Fleetwood RV Southwind Motor Home Class A



The Southwind Class A by Fleetwood gives you the freedom to explore without ever leaving the comforts of home. Watch the scenery change outside your dinette window and never be very far from that comfy sofa or the smell of rich brewed coffee.

Traveling with a Southwind means ever changing adventure with all the luxury and comfort right at your fingertips. You can plan a weekend away or an extra long stay with the extensive storage space in the Power Platform Plus (select models), that allow you to take everything you need to feel right at home anywhere. The Southwind has a uniquely beautiful contemporary styling both inside and out.

So whether you are a young family just starting out, or a retired couple looking for the next adventure that awaits, let the warm breeze of a Southwind take you on your next journey!



## 2009 Southwind 32VS



Double Slide Fleetwood Class A Motor Home, Rear Queen Bed Slide w/Nightstands, Wardrobe, Utility/TV, Vanity, Tub/Shower, Lav., Ward., Pantry, 3 Burner Range, Microwave, Double Kitchen Sink, Recliner, End Table, Sofa Sleeper & Booth Dinette Slideout, 17 Ft. Awning, Choice of Engine & Chassis & More.

### Southwind 32VS Specifications

Specification	Description
<b>Length</b>	33'5"
<b>Width</b>	8'6"
<b>Height</b>	12'10"
<b>Interior Height</b>	7'0"
<b>Hitch Weight</b>	5,000 lbs
<b>Gross Weight</b>	22,000 lbs
<b>Axle Weight</b>	22,000 lbs
<b>Fresh Water Capacity</b>	80 gals
<b>Grey Water Capacity</b>	58 gals
<b>Black Water Capacity</b>	42 gals
<b>Furnace BTU</b>	34,000
<b>Sleeps</b>	6
<b>Engine</b>	6.8L Triton V10
<b>Chassis</b>	Ford
<b>Slides</b>	2
<b>Interior Color</b>	Spa/Ebony/Blue Topaz/Domino

## 2009 Southwind 35J



Double Slide Motor Home, Rear Queen Bed w/Nightstands/Ward./Utility/Refrig./3 Burner Range w/Micro./Dbl. Kit. Sink Wall Slide Out, Booth Dinette & Sofa Sleeper Slideout, Side Aisle Bath w/Corner Shower, Lavatory, Toilet, 17' Awning, Engine & Chassis Choice and More.

### Southwind 35J Specifications

Specification	Description
<b>Length</b>	36'11"
<b>Width</b>	8'6"
<b>Height</b>	12'10"
<b>Interior Height</b>	7'0"
<b>Hitch Weight</b>	5,000 lbs
<b>Gross Weight</b>	22,000 lbs
<b>Axle Weight</b>	22,000 lbs
<b>Fresh Water Capacity</b>	80 gals
<b>Grey Water Capacity</b>	58 gals
<b>Black Water Capacity</b>	42 gals
<b>Furnace BTU</b>	50,000
<b>Sleeps</b>	4
<b>Engine</b>	6.8L Triton V10
<b>Chassis</b>	Ford
<b>Slides</b>	2
<b>Interior Color</b>	Spa/Ebony/Blue Topaz/Domino

# Southwind Features:

## Standard Features (2009)

### Interior -Throughout

- 10 Gallon Quick Recovery Water Heater w/Direct Spark Ignition (gas/electric)
- 20,000/30,000 BTU Dual Furnace (35J, 36D)
- 3 Interiors
- 34,000 BTU Furnace (32VS, 34G, & 35A)
- 7' Interior Ceiling Height
- Beveled Mirrors
- Complete TuffPEX Plumbing System
- Deluxe Roller Bearing, Full Extension Drawer Guides & Transit-Ship Locks
- Demand Water Pump w/Filter
- Dual 6V/Deep Cycle House Batteries
- Dual Roof A/C High Efficiency w/Solar Panel and Chill Grills
- DVD Home Theater Sound System
- Fluorescent Ceiling Lights w/Dual Bulbs & Wood Trim
- Plantation Cherry Wood Grain or Symphony Cherry Wood Grain
- Telephone Jack In-Dash
- Vinyl Ceiling, Cushioned
- Water Heater Bypass
- Whole Coach Water Filtration System

### Driver Convenience

- 3 Point Seat Belts at Driver & Front Passenger Seats
- AM/FM Radio w/CD Player, Satellite Radio Ready w/Auxiliary Jack
- Auto A/C Heater Combo
- Auxiliary Start Circuit
- Battery Disconnect System
- Computer Workstation In-Dash
- Cruise Control
- Dash Fans
- Driver's Door w/Power Window Lift
- Driver/Front Passenger Ultraleather™ Captain's Chairs w/Power Driver Seat
- DSS Manual Lift Satellite Dish
- Engine Cover Convenience Tray
- Intermittent Wiper Control
- iPod Docking Station
- Power Front Windshield Shade
- Radio Switch Main/Auxiliary Power
- Tilt Steering Wheel

### Living Room

- 26" or 32" LCD HDTV Dependent on Floor Plan
- Day/Night Pleated Shades
- Free Standing Lounge Recliner (N/A on 34G, Optional on 35J)
- Residential Seat Styling

## **Bathroom**

- Fan-Tastic® Power Roof Vent
- Make-Up Lights
- Moen® Lavy Faucet
- Molded Tub/Shower Enclosure
- Porcelain Lavvy Faucet
- Porcelain Toilet w/Water Saver
- Skylight in Tub/Shower
- Toilet Tank San-T-Flush™ System
- Vinyl Flooring

## **Galley**

- 1.4 cu. ft. Microwave Oven
- 3 Burner, High Output Range w/Oven
- 8 cu. ft. Dometic® Double Door Refrigerator
- Brushed Nickel Finish Cabinet Hardware
- Double Bowl Stainless Steel Sink
- Fan-Tastic® Power Roof Vent
- Radius Corner Cabinetry
- Range Cover Flush Mount
- Single Lever Moen® Faucet w/Sprayer
- Sink Cover/Cutting Board
- Skylight
- Slide-Out Dinette Bins w/Latches
- Solid Surface Counter Tops
- Waste Basket

## **Bedroom**

- 19" or 26" LCD HDTV Dependent on Floor Plan
- Accessory Package (Hair Dryer, Vacuum & Flashlight)
- Bedspread w/Decor Pillows
- Dual Pane Torque Windows
- Headboard
- Pleated Shades
- Rear Speakers
- Restonic® Deluxe Pillow Top Innerspring Mattress

## **Safety/Convenience**

- 10 ABC Fire Extinguisher
- Carbon Monoxide Detectors/Alarm
- Child Safety Tether
- Entry Assist Handle
- Multiple Seatbelt Locations
- New 30" Wide Entry Door
- Propane Detector/Alarm
- Smoke Detector/Alarm

## **Exterior - Throughout**

- 120V/12V AC/DC Converter Central Electrical Panel
- 3 Way Water Pump Switch

- 5.5 kW Onan® Generator
- 50 Amp Service
- 6 Colorways in 2 Graphic Schemes
- Aluminum Tube Front Grill
- Awning Rail/Drip Molding (Both Sides)
- Dual Pane Windows w/Screens
- Dual Patio Receptacles
- Fiberglass Front/Rear Caps
- Full-Body Paint
- Halogen Headlights
- Heated Water & Holding Tank Compartments
- Molded Front Quarter Panels
- Mud Flaps
- One-Piece Panoramic Windshield
- Park Cable Receptacle
- Patio Awning
- Single Motor Windshield Wipers w/Wet Arm
- Slide Topper Awnings
- Steel Outriggers
- TV Antenna w/Signal Booster

### **Body Structure**

- Aluminum Interlocking Floor/Wall/Ceiling Framing
- Basement Floor Configuration
- Power Platform® Plus Construction (Fleetwood Exclusive)
- Royal Tuff-Ply Radius Roof w/Ducted A/C
- Vacu-bond® Upper/Lower Floors
- Vacu-bond® Walls w/Smooth, High Glass Tuff-Coat Exterior Fiberglass

### **Automotive**

- 4 Point Hydraulic Automatic Levelers
- Trailer Hitch w/7 Pin Electrical Hook-Up

### **Storage**

- Continuous One-Piece Compartment Bulb Seal
- Gas Lift Strut Supports
- Insulated Aluminum Luggage Doors w/Single Paddle Metal Latches & Stainless Steel Hinges
- Lighted Luggage Compartments
- Pass Through Storage (Selected Models)
- Rotomolded Polyethylene Luggage Compartments
- Side Swinging Luggage Door (Select Locations)

### **Safety/Convenience**

- Automotive Safety Glass
- Color LCD Rear Vision Camera w/One-Way Audio
- Daytime Running Lights
- Hydraulic 4 Wheel Disk Brakes w/4 Wheel Anti-Lock Brakes
- Large, Heated Remote Rear View Mirrors
- Lighted Entry Assist Handle
- Porch Light (Doorside)
- Power Entry Step

- Roof Ladder
- Underhood Utility Lights
- Utility Compartment w/Exterior Shower
- Winterizing Pick-Up Tube

## Options

### Interior - Throughout

- 1200 Watt Inverter
- Neutral Loss Protection

### Driver Convenience

- Auto-Locating Satellite Dish
- CB Radio Ready
- Sirius Satellite Radio® (6 Month Subscription Included)

### Living Room

- Hide-A-Bid Sofa
- Leather Euro Recliner w/Ottoman\*
- Sofa w/Footrest\*
- Super Lounge/Dinette\*
- Ultraleather™ Hide-A-Bed
- Ultraleather™ Lounge Recliner
- Ultraleather™ Sofa Bed
- Ultraleather™ Sofa Bed w/Footrest

### Galley

- 4 Door Dometic Refrigerator w/Ice Maker\*
- 4 Door Norcold Refrigerator w/Ice Maker
- Convection Microwave Oven
- Dinette/Computer Workstation
- Free-Standing Dinette w/Credenza
- Washer/Dryer\*

### Bedroom

- King Bed Air Mattress\*
- Queen Bed Air Mattress

### Exterior - Throughout

- CSA Package (Canadian Specs)\*\*
- Diamond Shield Clear Front Protective Mask
- Dual A/C w/Heat Pump w/Solar Panel on Front A/C
- Electric Awning Weather Pro (32VS, 34G & 36D)
- Exterior Entertainment Center
- Side View Camera System

### Automotive

- Ford® Chassis w/6.8L Triton V10 Engine

- Workhorse™ Chassis w/8.11 Vortec Engine

**See us for a complete list of features and available options.**

**All features and specifications are subject to change.**