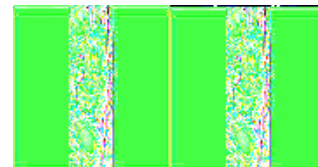
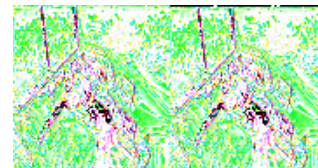
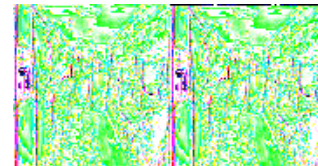
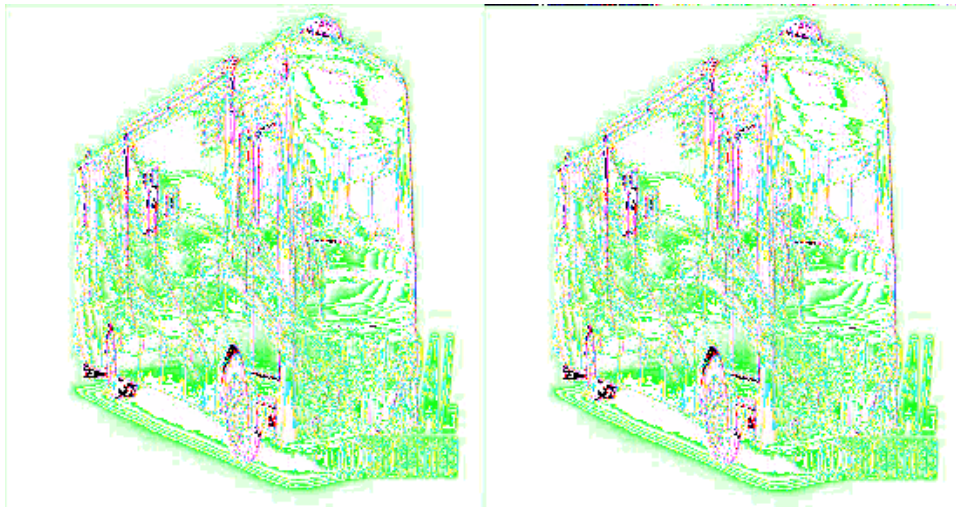


Fleetwood RV Expedition Motor Home Class A - Diesel

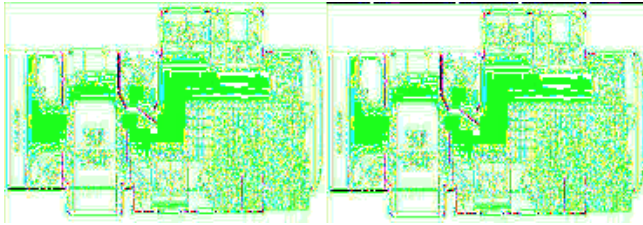


Take an Expedition into the countryside if you want to really relax! The Fleetwood Class A diesel Expedition has everything you could want in a home on wheels offering you a decor that is contemporary in style, and has plenty of room to relax.

You'll be pleased with the 7 foot ceiling height, triple or quadruple slide rooms to maximize your living space. Or, choose the model with a full wall slideout to make life on the road seem even more like home. The galley is full functioning so meal preparation is easy. You'll find the master suite was created for comfort and tranquility so you should be sleeping like a baby at night.

The Expedition gives you all the space and conveniences that you need to help you relax while vacationing. Fleetwood wants you to be able to explore the country in style and comfort, so on your next journey make it a Fleetwood Expedition!

2009 Expedition 38F

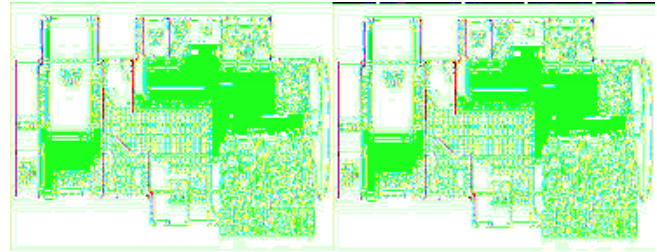


Triple Slide Expedition by Fleetwood w/Rear Bathroom, Wardrobe, Private Lavatory/Toilet Area, Shower, Slide Out Queen Bed, Opt. Air Mattress, Half Bath w/Toilet & Sink, 32" LCD TV, Slide Out Sofa/Double Kitchen Sink/3 Burner Range/Refrigerator, Slide Out Sofa/Booth Dinette and More.

Expedition 38F Specifications

Specification	Description
Length	38'4"
Width	8'5"
Height	12'10"
Interior Height	7'0"
Hitch Weight	10,000 lbs
Gross Weight	31,000 lbs
Axle Weight	31,000 lbs
Fresh Water Capacity	105 gals
Grey Water Capacity	75 gals
Black Water Capacity	50 gals
Sleeps	6
Engine	Cummins 6.7L
Chassis	Freightliner XC
Slides	3
Interior Color	Spa, Ebony, Blue Topaz, Domino

2009 Expedition 38Y



Triple Slide Out Rear Bedroom, Wardrobe, Washer/Dryer, Dresser, Sink, Slide Out Queen Bed, Shower, Sink, Toilet, Slide Out Pantry/4 Door Refrigerator/TV/Desk/Sofa, Slide Out Double Kitchen Sink/3 Burner Range/Booth Dinette, and More.

Expedition 38Y Specifications

Specification	Description
Length	38'4"
Width	8'6"
Height	12'10"
Interior Height	7'0"
Hitch Weight	10,000 lbs
Gross Weight	31,000 lbs
Axle Weight	31,000 lbs
Fresh Water Capacity	105 gals
Grey Water Capacity	75 gals
Black Water Capacity	50 gals
Sleeps	6
Engine	Cummins ISBXT 6.7L
Chassis	Freightliner XC
Slides	3
Interior Color	Spa, Ebony, Blue Topaz, Domino

Expedition Features:

Standard Features (2009)

Interior - Throughout

- 10 Gallon Quick Recovery Water Heater w/Direct Spark Ignition (Gas/Electric)
- 20,000/25,000 BTU Dual Furnaces (20,000/30,000 Btu Dual Furnaces on 38R Model)
- 84" Interior Ceiling Height
- Brushed Nickel Cabinet Hardware
- Ceiling Ducted Roof A/C
- Complete TuffPEX Plumbing System
- Crown Molding
- Day/Night Pleated Shades
- Deluxe Roller Bearing, Full Extension Drawer Guides & Transit Ship Locks
- Demand Water Pump w/Filter
- Dual Roof Mounted A/C High Efficiency w/Solar Panel & Chill Grille on Front A/C
- Hardwood Cabinet Doors/Drawers
- Large Overhead Cabinets w/Raised Panel Doors
- Plush Wall-to-Wall Carpet w/Padding
- Radius Corner Cabinetry
- Solar Battery Charger
- Solid Surface Countertops (Lavy & Galley)
- Vinyl Flooring at Entry
- Wall Switches (Includes Switches for Ceiling Lights & Vents)
- Water Heater Bypass
- Whole Coach Water Filtration System
- Window Coverings
- Wood Finish Return Air Intake for Furnace
- Woven Jacquard Feature Fabrics

Options

- CSA Package (Canadian Specs)
- Washer/Dryer
- Water Heater 16 Gallon Output

Driver Conveniences

- Adjustable 3 Point Seat Belts at Driver & Front Passenger Seats (with adjustable shoulder straps)
- AM/FM/CD Stereo w/Sirius Satellite Radio® Ready
- Auto A/C Heater Combo
- Auxiliary Start Circuit
- Battery Disconnect System
- CB Radio Ready
- Color Back Up Monitor
- Cruise Control
- Dash Fans
- Driver/Front Passenger Ultraleather™ Captain's Chairs w/Reclining Back/Slide Controls w/Power Driver Seat
- Multi-Function Sun Visor
- Passenger Armrest w/Integrated Magazine Rack
- Radio Switch Main/Auxiliary Power
- Sofa Surface Automotive Dash w/Snack Tray & Convenient Service Door

- Tilt/Telescoping Steering Wheel

Options

- Power Driver/Front Passenger Sun Visors
- Power Passenger Seat w/Power Footrest

Living Room

- Beveled Decor Mirrors
- Flexsteel® Residential Seat Styling
- Samsung® 32" LCD HDTV (32" Midship on 38F)
- Samsung® Home Theater Sound System
- Satellite Dish Ready
- TV Antenna w/Signal Booster
- Video Switch Box

Options

- Recliner w/Table (38L and 38R)
- Sofa Sleeper w/Air Mattress
- Ultraleather™ Love Seat (38F, 38L, 38R)

Bathroom

- A/C Venting
- Assist Handle
- Brushed Chrome Bath Accessories
- Cabinet Toe Kicks
- Fan-Tastic® Power Roof Vent w/Wall Switch
- Glass Shower w/Skylight and Low Threshold
- Make-Up Lights
- Porcelain Toilet w/Water Saver
- Vinyl Flooring

Galley

- 22" 3-Burner, High Output Cooktop
- Cabinet Toe Kicks
- Convection Microwave Oven
- Fan-Tastic® Power Roof Vent w/Wall Switch
- Large Double Sink
- Norcold® 12 cu.ft. Refrigerator
- Roll-Out Countertop (38N, 38L)
- Single Lever Faucet w/Pull Out Sprayer
- Soap Dispenser
- Solid Surface Counter Top, Sink & Range Covers, Mirror Backsplash in Galley
- Under Galley Shelving & Wastebasket
- Vinyl Flooring
- Window Over Sink

Options

- 22" 3-Burner, High Output Range w/Oven
- Free Standing Dinette w/Credenza (38F, 38L, 38R)

- Free-Standing Dinette Table & Chairs (38F, 38L, 38R)

Bedroom

- Bedspread w/Decor Pillows
- Innerspring Mattress
- Rear Speakers
- Remote Generator Start
- Samsung® 19" LCD TV
- Ventilated Rear Wardrobe w/Cedar Lining, Carpeted Floor & Wire Organizer

Safety/Conveniences

- Carbon Monoxide Detector/Alarm
- Energy Management System (EMS) w/Soft Start
- Fire Extinguisher
- Multiple Seatbelt Locations
- Propane Detector/Alarm
- RV System Monitor Panel
- Smoke Detector/Alarm

Exterior - Throughout

- 120V/12V AC/DC Converter
- 120V/12V Wire Raceways
- 2000 Watt Pure Sine Wave Inverter w/Remote
- 4 Point Automatic Levelers
- 50 Amp Service
- 8.0kW Onan® Quiet Diesel Generator
- Aerodynamic Bus Styling
- Awning Rail/Drip Molding (Both Sides)
- Dual Pane Windows w/Screens
- Fiberglass Front & Rear Bumpers & Wheel Wells
- Fiberglass Front/Rear Caps w/High Mounted Taillights
- Full-Body Paint
- Patio & Entry Door Awning
- Patio Receptacles
- Remote/Heated Rear View Mirrors
- Water Pump Switch (Multiple Locations)

Options

- Auto-Locating Satellite Dish
- Dual AC w/Heat Pumps
- Window Awning Package

Body Structure

- Aluminum Interlocking Floor/Wall/Ceiling Framing
- Heated Water & Holding Tank Compartments
- Power Bridge™ Platform (Fleetwood Exclusive)
- Royal Tuff-Ply Radius Roof w/Ducted A/C
- Vacu-bond® Upper/Lower Floors

Automotive

- 10,000 lb. Weight Distributing Hitch Receiver w/7 Pin Electrical Hook-Up*
- 325HP Cummins® ISB 6.7L Engine
- Air Suspension
- Dual Fuel Fill (One on Each Side)
- Fog Lamps
- Freightliner® Chassis
- Halogen Headlamps
- Large One-Piece Bonded-in Windshield
- Mud Flaps
- Rear Vision Color Adjustable Camera
- Single Motor Diesel Equipment Windshield Wipers w/Wet Arm
- Stainless Steel Wheel Simulators
- Tire Valve Extenders
- Underhood Utility Light

Options

- Diamond Shield Clear Front Protective Mask
- Electric Awning
- Remote Keyless Entry

See us for a complete list of features & available options.

All standard features and specifications are subject to change.