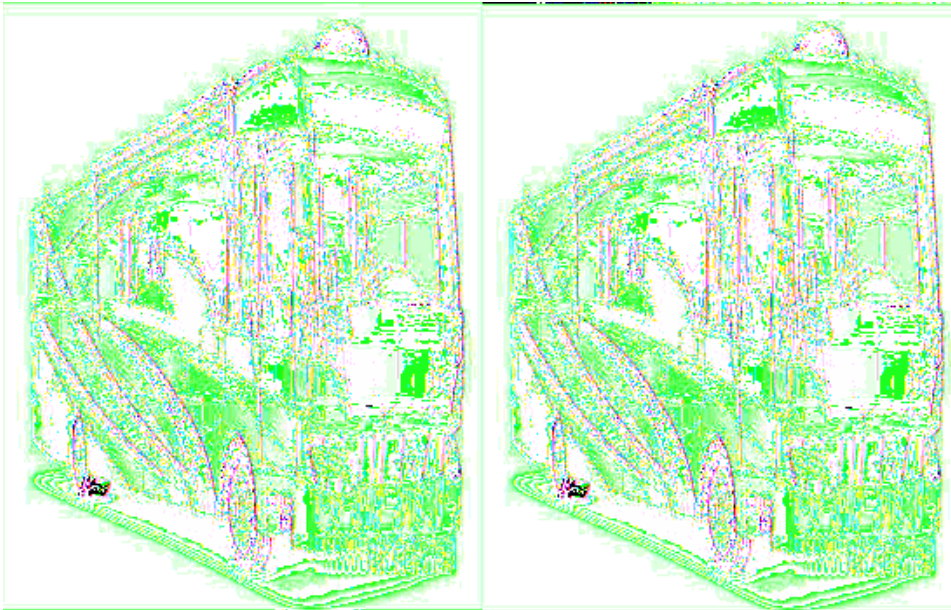


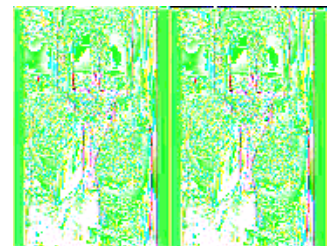
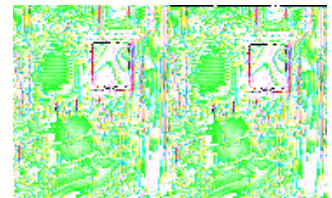
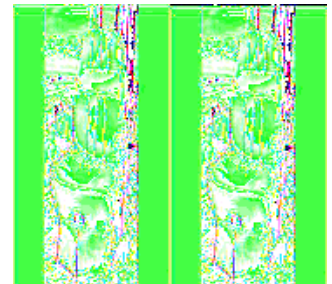
## Fleetwood RV Bounder Diesel Motor Home Class A - Diesel



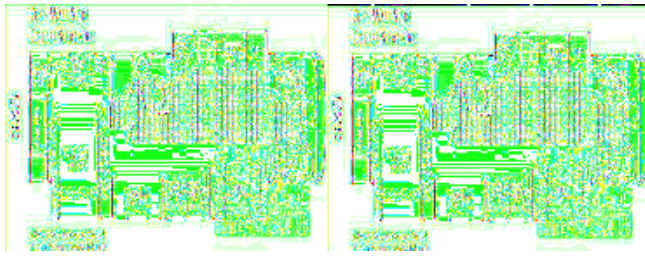
With the Fleetwood Bounder Diesel, life is not about limitations. It does not march to the beat of one drum and it never has to be set in stone. Life is bold. It calls for adventurous spirits who know no boundaries and fear no challenge. It's exhilarating, it's unique, it's calling you.

Our well-designed floor plans make use of tall 7-foot ceilings and numerous slide-outs to create an open, roomy feeling inside. From the galley to the bedroom, you'll find the top names in appliances, electronics and furnishings.

Pride of ownership comes easy when you've got a coach that looks as good as Bounder Diesel. Answer the call and make life one big roamin' holiday with a new Bounder Class A diesel from Fleetwood today!



## 2009 Bounder Diesel 36B



Double Slide Bounder Diesel Class A w/Full Wall Slide Including Queen Bed w/Nightstands/Shirt Wardrobe/Bunk Beds/Sofa Sleeper & Booth Dinette. 32" LCD TV/Double Kitchen Sink/3 Burner Range & Refrigerator Slide, Bath w/Corner Shower, Vanity w/Sink & Toilet, Rear Wall Bedroom Wardrobe, Opt. Washer/Dryer, Dresser w/Rear TV Ready Above, Linen Cabinet, Exterior Storage and More!

### Bounder Diesel 36B Specifications

Specification	Description
Length	36'4"
Width	8'6"
Height	12'10"
Interior Height	7'0"
Hitch Weight	5,000 lbs
Gross Weight	28,000 lbs
Axle Weight	28,000 lbs
Fresh Water Capacity	105 gals
Grey Water Capacity	75 gals
Black Water Capacity	50 gals
Furnace BTU	45,000
Sleeps	7
Engine	Cummins 6.7L 340 Hp
Chassis	Freightliner XCM
Slides	2
Exterior Color	4 color choices
Interior Color	Bahama Blues, Cashmere, Quartz, Seaside Sand

## 2009 Bounder Diesel 36D

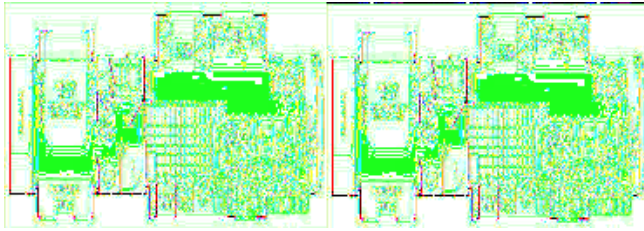


Triple Slide Bounder Diesel Class A Motor Home w/Rear Bedroom, Wardrobe, Opt. Washer/Dryer, Queen Bed Slideout w/Nightstands, Dresser, Rear TV Ready, Side Aisle Bath w/Shower, Lavatory & Toilet, Enter. Center w/32" LCD TV/Double Kitchen Sink/3 Burner Range/Pantry & 4 Door Refrigerator Slideout, Sofa Sleeper & Booth Dinette Slide Both w/Seat Belts and More.

### Bounder Diesel 36D Specifications

Specification	Description
Length	36'4"
Width	8'6"
Height	12'10"
Interior Height	7'0"
Hitch Weight	5,000 lbs
Gross Weight	28,000 lbs
Axle Weight	28,000 lbs
Fresh Water Capacity	105 gals
Grey Water Capacity	75 gals
Black Water Capacity	50 gals
Furnace BTU	45,000
Sleeps	6
Engine	Cummins 6.7L 340 Hp
Chassis	Freightliner XCM
Slides	3
Exterior Color	4 color choices
Interior Color	Bahama Blues, Cashmere, Quartz, Seaside Sand

## 2009 Bounder Diesel 38L

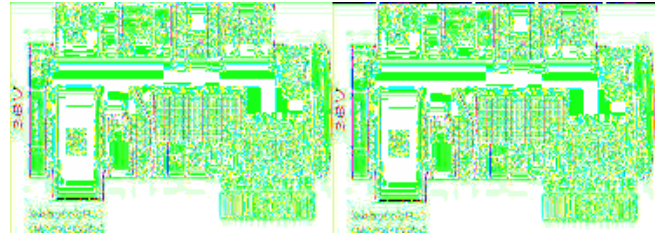


Quad Slide Diesel Coach w/Window Seat in Bedroom, LCD TV Above, Full End Wall Wardrobe, Queen Bed Slideout w/Nightstands, Opt. Queen Bed w/Air Mattress, Utility Cabinet, Storage Cabinet, Angle Shower, Lav., Pantry, Booth Dinette & Sofa Bed w/Seat Belts Slideout, Slide-Out Galley w/Storage, Pantry/4 Door Refrigerator/3 Burner Range/Double Kitchen Sink & Love Seat Slideout, LCD TV Above Cab Area and More.

### Bounder Diesel 38L Specifications

Specification	Description
Length	38'4"
Width	8'6"
Height	12'8"
Interior Height	7'0"
Hitch Weight	10,000 lbs
Dry Weight	24,000 lbs
Gross Weight	31,000 lbs
Axle Weight	31,000 lbs
Fresh Water Capacity	86 gals
Grey Water Capacity	50 gals
Black Water Capacity	50 gals
Furnace BTU	45,000
Sleeps	6
Engine	Cummins ISBXT 6.7L
Chassis	Freightliner XC
Slides	4
Exterior Color	Bahama Blues/Beige Bounty/River Rock/White Shadow
Interior Color	Bahama Blues/Cashmere/Quartz

## 2009 Bounder Diesel 38V



Full Wall Slide Diesel Motor Home w/Rear Queen Bed Slideout & Nightstands, Private Toilet & Shower Area, Wardrobe, Washer/Dryer Opt. Full Wall Slide Including Bedroom Dresser w/Rear TV Ready Above/Chair/Vanity w/Sink/Utility Cabinet/Booth Dinette & Sofa Bed, 32" LCD HD TV Above Cab Area, 52" Love Seat, Double Kitchen Sink, 3 Burner Range, 4 Door Refrigerator, Pantry and Much More.

### Bounder Diesel 38V Specifications

Specification	Description
Length	38'4"
Width	8'6"
Height	12'10"
Interior Height	7'0"
Hitch Weight	5,000 lbs
Gross Weight	28,000 lbs
Axle Weight	28,000 lbs
Fresh Water Capacity	105 gals
Grey Water Capacity	75 gals
Black Water Capacity	50 gals
Furnace BTU	45,000
Sleeps	6
Engine	Cummins 6.7L 340 Hp
Chassis	Freightliner XCM
Slides	2
Exterior Color	4 color choices
Interior Color	Bahama Blues, Cashmere, Quartz, Seaside Sand

# Bounder Diesel Features:

## Standard Features (2009)

### Interior - Throughout

- 10 Gallon Quick Recovery Water Heater w/Direct Spark Ignition
- 20,000/25,000 BTU Dual Furnaces
- 84" Interior Ceiling Height
- Pewter Cabinet Hardware
- Ceiling Ducted Roof A/C
- Complete TuffPEX Plumbing System
- Crown Molding
- Day/Night Pleated Shades
- Deluxe Roller Bearing, Full Extension Drawer Guides & Transit Ship Locks
- Demand Water Pump w/Filter
- Dual Roof Mounted A/C High Efficiency w/Solar Panel & Chill Grille on Front A/C
- Hardwood Cabinet Doors/Drawers
- Large Overhead Cabinets w/Raised Panel Doors
- Plush Wall-to-Wall Carpet w/Padding
- Radius Corner Cabinetry
- Vinyl Flooring Entry to Galley
- Water Heater Bypass
- Whole Coach Water Filtration System
- Window Coverings
- Wood Finish Return Air Intake for Furnace
- Woven Jacquard Feature Fabrics

### Driver Conveniences

- Adjustable 3 Point Seat Belts at Driver & Front Passenger Seats (with adjustable shoulder straps)
- AM/FM/CD Stereo w/Sirius Satellite Radio (6 Month Subscription Included)
- Auto A/C Heater Combo
- Auxiliary Start Circuit
- Battery Disconnect System
- Color Back Up Monitor
- Cruise Control
- Dash Fans
- Driver/Front Passenger Ultraleather™ Captain's Chairs w/Reclining Back/Slide Controls w/Power Driver Seat
- Multi-Function Sun Visor
- Passenger Armrest w/Integrated Magazine Rack
- Radio Switch Main/Auxiliary Power
- Sofa Surface Automotive Dash
- Tilt/Telescoping Steering Wheel

### Living Room

- Flexsteel® Residential Seat Styling
- Samsung® 32" LCD HDTV (32" Midship TV in 36D, 38F)
- Satellite Dish Ready
- TV Antenna w/Signal Booster
- Video Switch Box

## **Bathroom**

- A/C Venting
- Assist Handle
- Brushed Chrome Bath Accessories
- Cabinet Toe Kicks
- Fan-Tastic® Power Roof Vent w/Wall Switch
- Glass Shower w/Skylight and Low Threshold
- Make-Up Lights
- Porcelain Toilet w/Water Saver
- Vinyl Flooring

## **Galley**

- 22" 3-Burner, High Output Cooktop
- Cabinet Toe Kicks
- Convection Microwave Oven
- Fan-Tastic® Power Roof Vent w/Wall Switch
- Large Double Sink
- Norcold 9.5 cu. ft. Refrigerator w/Ice Maker
- Single Lever Faucet w/Pull Out Sprayer
- Soap Dispenser
- Solid Surface Counter Top
- Under Galley Shelving
- Vinyl Flooring
- Window Over Sink

## **Bedroom**

- Bedspread w/Decor Pillows
- Innerspring Mattress
- Rear Speakers
- TV Ready
- Ventilated Rear Wardrobe w/Clothes Rod

## **Safety/Conveniences**

- Carbon Monoxide Detector/Alarm
- Energy Management System (EMS) w/Soft Start
- Fire Extinguisher
- Multiple Seat Belt Locations
- Propane Detector/Alarm
- RV System Monitor Panel
- Smoke Detector/Alarm
- Neutral Loss, Low & High Voltage Protection

## **Exterior - Throughout**

- 120V/12V AC/DC Converter
- 120V/12V Wire Raceways
- 2000 Watt Pure Sine Wave Inverter w/Remote
- 4 Point Automatic Levelers
- 50 Amp Service
- 8.0kW Onan® Quiet Diesel Generator
- Aerodynamic Bus Styling
- Awning Rail/Drip Molding (Both Sides)

- Choice of 4 Colorways
- Dual Pane Windows w/Screens
- Fiberglass Front & Rear Bumpers & Wheel Wells
- Fiberglass Front/Rear Caps w/High Mounted Taillights
- Full-Body Paint
- Patio & Entry Door Awning
- Patio Receptacles
- Remote/Heated Rear View Mirrors
- Water Pump Switch (Multiple Locations)

### **Body Structure**

- Full Wall Slide (Patent Pending)
- Power Bridge Platform (Fleetwood Exclusive)
- Vacu-bond Walls w/Smooth High Gloss Exterior Tuff-Coat Fiberglass
- Aluminum Interlocking Floor/Wall/Ceiling Framing
- Heated Water & Holding Tank Compartments
- Royal Tuff-Ply Radius w/Ducted A/C
- Vacu-bond® Upper/Lower Floors

### **Automotive**

- 5,000 lb. Weight Distributing Hitch Receiver w/7 Pin Electrical Hook-Up\*
- 340HP Cummins® ISB 6.7L Engine
- Air Suspension
- Dual Fuel Fill (One on Each Side)
- Fog Lamps
- Freightliner® Chassis
- Halogen Headlamps
- Large One-Piece Bonded-in Windshield
- Mud Flaps
- Rear Vision Camera
- Single Motor Diesel Equipment Windshield Wipers w/Wet Arm
- Stainless Steel Wheel Simulators
- Tire Valve Extenders
- Under Hood Utility Light

### **Storage**

- Aluminum Luggage Door Seal Frames
- Central Utility Compartment
- Continuous One-Piece Compartment Bulb Seal
- Hidden, Stainless Steel Latch Rods
- Insulated Aluminum Luggage Doors w/Single Paddle Metal Latches & Stainless Steel Hinges
- Lighted Luggage Compartments
- Full Pass Through Storage
- Side Swinging Luggage Doors

### **Safety/Convenience**

- 20' Sewer Hose
- 4 Wheel ABS Brakes
- Automotive Safety Glass
- Central Electrical Panel
- Daytime Running Lights
- Dual Battery Charge Control

- Two 6V/Deep Cycle House Batteries
- Park Cable Receptacle
- Porch Light (Doorside)
- Power Entry Step
- Radius Entry Door w/Deadbolt Latch (Keyless Entry Ready)
- Roof Ladder
- Side Opening, Engine Access Door
- Toilet Tank San-T-Flush™ System
- Utility Compartment w/Exterior Shower

### **Options**

#### **Interior - Throughout**

- CSA Package (Canadian Specs)\*\*
- Washer/Dryer
- Entertainment Package (Auto Locating Satellite Dish, Power Visors, Ultraleather Sofa Bed, Home Theater, DVD Player and TV in Bedroom)

#### **Galley**

- Free-Standing Dinette w/Chairs
- Free-Standing Table & Chairs

#### **Exterior - Throughout**

- Exterior Package (Manual Patio Awning & front Clear Mask)
- Storage Package (Pull Out Storage Trays in Exterior Pass Through Compartments)

**See us for a complete list of features & available options.**

**All standard features and specifications are subject to change.**