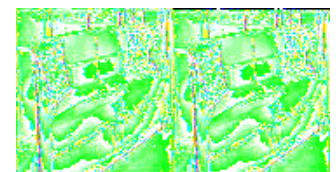
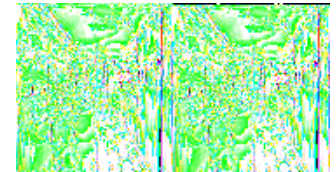
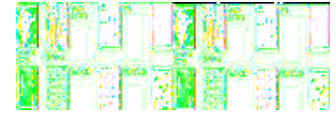
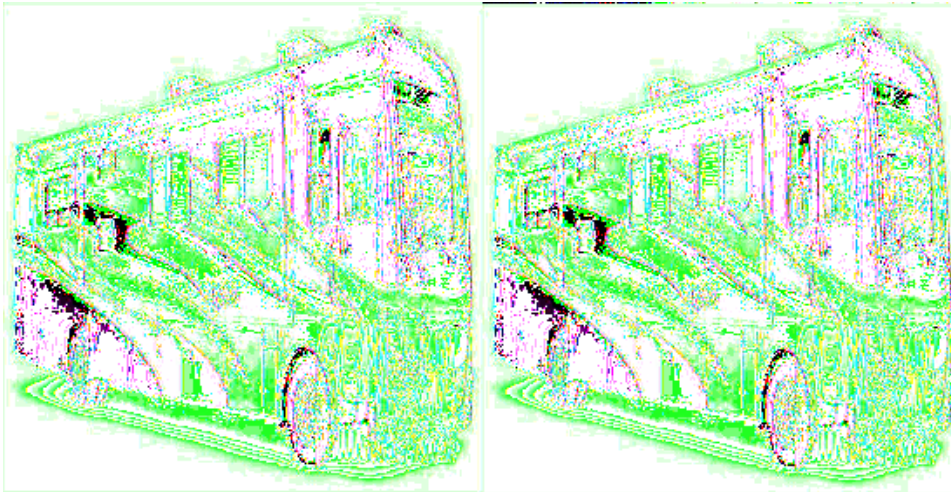


Fleetwood RV Discovery Motor Home Class A - Diesel



The Fleetwood Discovery Class A diesel is all about celebrating life! The Discovery was especially designed for those who love to travel and entertain. Models 39R & 40G with their full wall slide gives you an incredible 380 square feet inside so that you can entertain all your guests even when out on the road.

The Discovery provides you with dozens of standard features that others consider optional. The galley is a great example, with its upscale appliances, oversized refrigerator and designer appointments. This space is sure to be the headquarter of your entertainment home on wheels. With Discovery's spacious interior, your party has plenty of room to spread out. Discovery hasn't forgotten about your personal space for when the party is breaking for the night either. You'll drift off into dreamland with the peace and quiet that surrounds you and even be able to turn off the generator from your bedside remote switch. With plenty of relaxing space in the master suite you'll be ready to do it all over again the next day.

Discover all that is out there to see and experience in a 2009 Fleetwood Discovery Class A diesel motorhome today!

2009 Discovery 40G

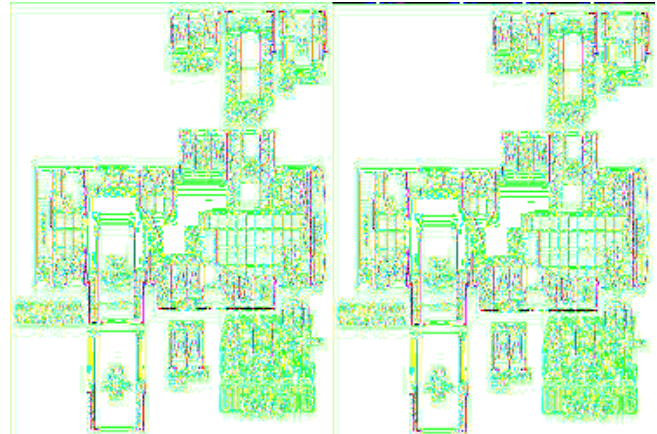


Double Slide Discovery w/Passenger Side Full Wall Slideout Including Queen Bed w/Nightstands/Shirt Ward./Vanity w/Sink & Counter/Sofa Bed & U-Shaped Dinette w/Overhead Cab., Opt. 32" LCD TV Above Cab Area, 4-Door Refrig./Pantry/3 Burner Range/Dbl. Sink & Ent. Ctr. Slide w/32" LCD TV Above End Table, Bath w/Corner Shower, Lav. & Toilet, Ward., Opt. Washer/Dryer, Dresser & 26" LCD TV, Opt. Bunk Beds, Opt. Ultra-Flex Recliner, Opt. Desk/Chair, Opt. Sofa Sleeper, Opt. Free-Standing Dinette & More.

Discovery 40G Specifications

Specification	Description
Length	41'4"
Width	8'6"
Height	12'10"
Interior Height	7'0"
Hitch Weight	10,000 lbs
Gross Weight	31,000 lbs
Axle Weight	31,000 lbs
Fresh Water Capacity	100 gals
Grey Water Capacity	75 gals
Black Water Capacity	50 gals
Furnace BTU	45,000
Sleeps	5
Engine	Cummins 6.7L 350 Hp
Chassis	Freightliner
Slides	2
Exterior Color	5 color choices
Interior Color	Cumulus Cloud, Cognac, Truffle II

2009 Discovery 40K



Triple Slide Discovery Class A, Rear Bath, Shower, Lav., Toilet, Ward., Opt. Washer/Dryer, Slide Queen Bed w/Nightstands, Opt. Queen Bed w/Air Mattress, 26" LCD TV, Dresser, Half Bath, Sofa Bed & Dinette Slide w/Opt. UltraLeather Sofa Sleeper w/Air Mattress, Opt. Free-Standing Dinette, End Table/32" LCD TV/Love Seat, Ent. Ctr./Dbl. Kit. Sink/3 Burner Range/4-Dr. Refrig. Wall Slide, Opt. UltraLeather Love Seat, Opt. 3-Burner Range w/Oven, Opt. Side By Side Refrig., Opt. 32" LCD TV Overcab & More.

Discovery 40K Specifications

Specification	Description
Length	41'4"
Width	8'6"
Height	12'10"
Interior Height	7'0"
Hitch Weight	10,000 lbs
Gross Weight	31,000 lbs
Axle Weight	31,000 lbs
Fresh Water Capacity	100 gals
Grey Water Capacity	75 gals
Black Water Capacity	50 gals
Furnace BTU	45,000
Sleeps	6
Engine	Cummins 6.7L 350 Hp
Chassis	Freightliner
Slides	3
Interior Color	Cumulus Cloud, Cognac, Truffle II

2009 Discovery 40X



Triple Slide Discovery Diesel Class A, Rear Queen Bed Slide w/Air Mattress, Nghtsd., Ward., Dresser/26" LCD TV, Shower, Toilet, Lav., Opt. Washer/Dryer, Ent. Ctr., 40" LCD TV, 2 Recliner/End Table/Dinette Slide, Sofa Sleeper/Db. Kit. Sink/3 Burner Range/4-Dr. Refrig., Overcab Opt. 32" LCD TV, Options: UltraLeather Sofa Sleeper/3-Burner Range w/Oven/Side-By-Side Refrig./Passenger Seat w/Footrest/UltraLeather Sofa Bed w/Table/Free Standing Dinette/U-Shaped Dinette & Much More.

Discovery 40X Specifications

Specification	Description
Length	41'4"
Width	8'6"
Height	12'10"
Interior Height	7'0"
Hitch Weight	10,000 lbs
Gross Weight	31,000 lbs
Axle Weight	31,000 lbs
Fresh Water Capacity	100 gals
Grey Water Capacity	75 gals
Black Water Capacity	50 gals
Furnace BTU	50,000
Sleeps	6
Engine	Cummins 6.7L 350 Hp
Chassis	Freightliner
Slides	3
Interior Color	Cumulus Cloud, Cognac, Truffle II

Discovery Features:

Standard Features (2009)

Interior - Throughout

- 10-Gallon Quick-Recovery Water Heater w/Direct Spark Ignition (Gas/Electric)
- 20,000/ 25,000 BTU Dual Furnace
- 20,000/ 30,000 BTU Dual Furnace (39R & 40X)
- 84" Interior Ceiling Height
- Complete TuffPEX Plumbing System
- Crown Molding
- Day/Night Pleated Shades
- Deluxe Roller Bearing, Full Extension Drawer Guides & Transit-Ship Locks
- Demand Water Pump w/Filter
- Laminate Floor Tile
- Hardwood Cabinet Doors/Drawers
- Plush Wall-to-Wall Carpet w/Pad
- Wall Sconces
- Wall-Switches (Includes Switches for Ceiling Lights & Vents)
- Water Heater Bypass
- Whole Coach Water Filtration System
- Wood-Finish Air Intake for Furnace

Driver Conveniences

- Adjustable 3 Point Seat Belt at Driver & Front Passenger Seats
- AM/FM/CD Stereo, Sirius Satellite Radio Ready
- Auxiliary Start Circuit
- Battery Disconnect System
- CB Radio Ready
- Color Back-Up Monitor
- Cruise Control
- Desco High Output Auto A/C Heat Combo
- Driver/Front Passenger Ultraleather Captain's Chairs w/Reclining Back/Slide Controls w/Power Driver Seat
- Driver Side Manual Pull Down Shades
- Passenger Armrest w/Integrated Magazine Rack
- Passenger Seat w/Power Footrest & Adjustable Armrest
- Power Driver/Front Sun Visors
- Radio Switch Main/Auxiliary Power
- Snack Tray/Service Door at Dash
- Soft Surface Automotive Dash
- Tilt/Telescoping Steering Wheel

Living Room

- Flexsteel Residential Seat Styling
- Samsung 32" HD LCD TV (32" Midship in 37D, 40G & 40K; 40" Midship in 40X)
- Samsung DVD Player
- TV Antenna w/Signal Booster

Bathroom

- A/C Venting
- Cabinet Toe Kicks
- Carbon Monoxide, Propane & Smoke Detectors
- Energy Management System w/Soft Start
- Fire Extinguisher
- Fan-Tastic Power Roof Vent w/Wall Switch
- Glass Shower w/Skylight and Low Threshold
- Moen Faucet
- Hardwood Bath Door/Trims
- Lighted Assist Handle
- Make-Up Lights (some models)
- Moen Faucet
- Multiple Seatbelt Locations
- Neutral Loss Protection
- Porcelain Toilet w/Water Saver
- Propane Detector/Alarm
- Smoke Detector/Alarm

Galley

- 1.4 cu. ft. Convection Microwave Oven
- 3 Burner, High-Output Cooktop w/Sealed Burners
- Adjustable Cabinet Shelves (Select Cabinets)
- Fan-Tastic Power Roof Vent w/Wall Switch
- Light/Power Range Hood
- Norcold 12 cu. ft. 4 Door Refrigerator w/Ice Maker and Water Dispenser
- Roll-Out Counter Top (39R)
- Moen Galley Faucet w/Pullout Sprayer
- Six Person Pull-Out Dinette Table (Select Models)
- Slide-Out Dinette Drawers w/Latches
- Soap Dispenser
- Solid Surface Counter Top, Sink & Range Covers
- Under Galley Shelving & Wastebasket
- Window Over Sink
- Wood Trim Dinette Tabletop

Bedroom

- Bedspread w/Decor Pillows
- Coffered Ceiling
- Dresser/Vanity w/Second Sink (40G)
- Remote Generator Start
- Restonic Deluxe Pillow Top Innerspring Mattress
- Samsung 26" LCD HDTV
- Samsung AM/FM/DVD Home Theater w/5.1 Dolby Surround Sound Speakers
- Slide-Out Features Overhead Cabinets
- Ventilated Rear Wardrobe w/Cedar Lining, Carpeted Floor & Wire Organizer
- Wardrobe Lighting

Exterior - Throughout

- 120V/12V AC/DC Converter
- 120V/12V Wire Raceways
- 2000-Watt Inverter w/Remote
- 4 Point Automatic Levelers

- 50-Amp Service
- 8.0 kW Onan® Quiet Diesel Generator
- Awning Rail/Drip Molding (Both Sides)
- Choice of 5 Colorways
- Dual Pane Windows w/Screens
- Doorside Patio Receptacle
- DSS Auto Locating Satellite Dish (Covered)
- Fiberglass Front Quarter Panels
- Fiberglass Front/Rear Caps w/High-Mounted Taillights
- Fiberglass Wheel Well Trims
- Full-Body Paint
- Weather Pro Power Awnings (Patio Awning Includes Wind Sensor)
- Water Pump Switch (Multiple Locations)

Body Structure

- Aluminum Interlocking Floor/Wall/Ceiling Framing
- Color Coordinated Royal Tuff-Ply Roof
- Heated Water & Holding Tank Compartments
- Power Bridge Construction (Fleetwood Exclusive)
- Royal Tuff-Ply Radius Roof w/Ducted A/C
- Vacu-bond Upper/Lower Floors

Automotive

- 10,000 lb. Weight Distributing Hitch Receiver w/7 Point Electrical Hook-Up
- 350 Hp Cummins ISB 6.7L Engine
- Aluminum Wheels
- Chrome Exterior Mirrors
- Color Rear Vision Camera
- Dual Fuel fill (one each side)
- Fog Lamps
- Freightliner Chassis
- Large One-Piece Bonded-in Windshield
- Mud Flaps
- Remote Keyless Entry
- Single Motor Diesel Equipment Windshield Wipers w/Wet Arm
- Underhood Utility Light

Storage

- Continuous One-Piece Compartment Bulb Seal
- Insulated Aluminum Luggage Doors w/Single Paddle Metal Latches & Stainless Steel Hinges
- Large Compartment Doors
- Lighted Luggage Compartments
- Pass Through Storage
- Side Swinging Luggage Doors

Safety Conveniences

- 20' Sewer Hose
- 4 Wheel ABS Speakers
- Automotive Safety Glass
- Daytime Running Lights
- Easy Sweep Tile Flooring at Entry Step

- Energy Management System w/Soft Start
- Entry Door w/Screen Door & Deadbolt Lock
- Four 6V/Deep Cycle House Batteries
- Lighted Entry Assist Handle
- Power Entry Step
- Rear Side Marker Lights
- Remote/Heated Rear View Mirrors
- Toilet Tank San-T-Flush System
- Touch Sensor Tank Monitor System
- Utility Compartment w/Exterior Shower

Options

Interior - Throughout

- Central Vacuum System
- CSA Package (Canadian Specs)**
- Washer/Dryer
- Water Heater 16 Gallon Output

Driver Convenience

- Automatic Generator Start System
- Blind Spot/Security Vision Package
- Power Passenger Seat w/Power Footrest

Living Room

- Desk (Select Models)
- Free-Standing Dinette w/Credenza
- Free Standing Table & 4 Chairs
- Recliner w/Table (39R)
- Samsung 32" LCD HDTV in Front Overhead (37D, 40G, 40K & 40X)
- Ultraleather Love Seat (39R & 40X)
- Ultraleather Sofa Bed (40X)
- Ultraleather Sofa Sleeper w/Air Mattress (39R, 40G, 40K & 40X)

Galley

- 14 cu. ft. Dometic Frost Free Refrigerator
- 3 Burner Sealed Drop-In Range w/Oven

Exterior - Throughout

- Exterior Entertainment Center w/Samsung 32" LCD HDTV and Stereo
- Exterior Grill and Kitchenette
- Heat Pumps
- Window Awning Package

Automotive

- Chrome Spotlight w/Remote Control
- Diamond Shield Clear Front Protective Mask

See us for a complete list of features and options!

All standard features and specifications are subject to change.



Brownstown 734-284-5500
Birch Run 989-624-700
Mt. Clemens 586-954-3600

Waterford 248-674-0346
Wayland/Grand Rapids 269-792-9118
Wixom 248-349-0900