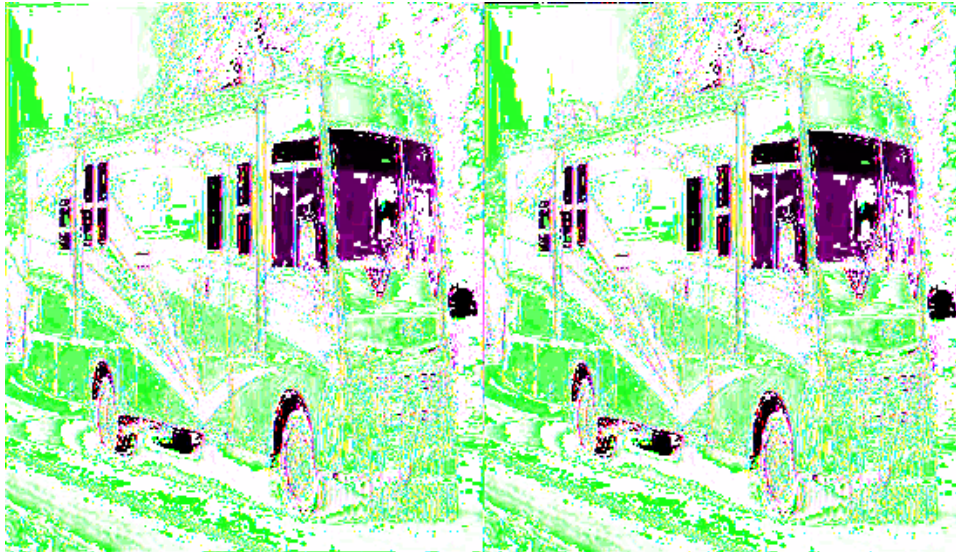


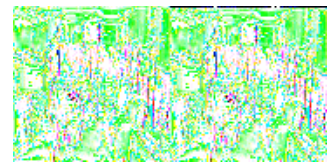
Winnebago Sightseer Motor Home Class A



Want a good look at the country side? See it all through a 2009 Winnebago Sightseer class A motorhome. You'll love the beautiful curved cabinetry featured in all models except the 37L, and love the optional full-body paint. This is definitely a coach that you'll want to be seen riding in.

Enjoy SmartSpace amenities that make the most of the available space in all Winnebago coaches. You'll find the Sightseer in four very distinct floorplans with double slideouts in all, plus a third slide in model 37L. Choose UltraLeather furniture and cab seats and your choice of three beautiful interior fabric decors. Add options like an available fireplace in model 37L, a rear view monitor system, or an interior upgrade package with rope lighting, stainless steel refrigerator doors and Dream Dinette dining table (N/A 37L) to name a few.

With a Winnebago Sightseer class A motorhome you'll even get to choose between a Ford and Workhorse chassis. How's that for options? Make each trip an adventure and do all your sightseeing in a 2009 Winnebago Sightseer. The view is spectacular!



2009 Sightseer 35J



Sightseer Class A Coach w/Double Slideouts & Bunks, Rear King Bed w/Nightstands, Chest of Drawers w/Opt. TV Above/Wardrobe & Bunk Bed Slide, Opt. DVD/LCD Monitor for Bunks, Shower, Vanity w/Sink & Toilet, Booth Dinette & Sofa Bed Slideout, TV Above Cab Area, Lounge Chair or Opt. Euro Chair w/Ottoman, 3 Burner Range, Refrigerator, Pantry and More. Ford Specifications Shown. Workhorse Chassis Available.

Sightseer 35J Specifications

Specification	Description
Length	35'3"
Width	8'5"
Height	12'3"
Interior Height	6'8"
Hitch Weight	5,000 lbs
Gross Weight	20,500 lbs
Axle Weight	21,000 lbs
Fresh Water Capacity	75 gals
Grey Water Capacity	48 gals
Black Water Capacity	44 gals
Furnace BTU	40,000
Sleeps	8
Engine	6.8L V10 Triton SOHC
Chassis	Ford F53
Slides	2
Exterior Color	5 color choices
Interior Color	Aspen Leaf, Sesame Seed, Hampton Blue

2009 Sightseer 37L



Triple Slide Sightseer w/Rear King Bed Slideout w/Nightstands, Wardrobe, Storage Cabinet w/TV Location & Dining Table & Chairs or Opt. Booth Dinette Slide, Bedroom Ward., Chest of Drawers, Opt. TV, Corner Shower, Vanity w/Sink, Overhead Cabinet & Toilet, Dbl. Kitchen Sink, 3 Burner Range, Refrigerator, Slideout Sofa Bed or Sofa Sleeper, Slideout 37" LCD TV w/Opt. Fireplace Below & Storage Cabinet w/Pull-Out Desk and More. Ford Specs Shown, Workhorse Chassis Available.

Sightseer 37L Specifications

Specification	Description
Length	38'0"
Width	8'5"
Height	12'5"
Interior Height	6'8"
Hitch Weight	5,000 lbs
Gross Weight	22,000 lbs
Axle Weight	22,000 lbs
Fresh Water Capacity	70 gals
Grey Water Capacity	42 gals
Black Water Capacity	47 gals
Furnace BTU	40,000
Sleeps	4
Engine	6.8L V10 Triton SOHC
Chassis	Ford F53
Slides	3
Exterior Color	5 color choices
Interior Color	Aspen Leaf, Sesame Seed, Hampton Blue

Sightseer Features:

Standard Features (2009)

Chassis

- Ford F53 Chassis
- 362 Hp 6.8L Super Duty V10 SOHC Triton engine
- TorqShift 5 speed automatic transmission
- Hydraulic brakes
- 4-wheel ABS
- 130-amp alternator
- 7-pin trailer wiring
- Trailer hitch 5,000 lb. drawbar/500 lbs. maximum vertical tongue weight
- Stainless steel wheel liners

Optional Chassis

- Automatic leveling jacks w/3 position controls (all models)
- Workhorse W18 Chassis: (340 hp 8.1L GM Vortec engine, 4L85-E 4-speed transmission, Hydraulic brakes, 4-wheel ABS, 145-amp. alternator. (29R only)
- Workhorse W22 Chassis: (340 hp 8.1L GM Vortec engine, Allison 1000MH 6-speed transmission, Hydraulic brakes, 4-wheel ABS, 145-amp alternator (31E, 35J, 37L)

Cab Conveniences

- Fabric cab seats w/armrests, lumbar support, multi-adjustable
- AM/FM radio w/CD/DVD player, alarm clock, weather band, iPod/MP3 input, remote
- Chassis/house battery radio power switch
- Tilt steering wheel
- Cruise control
- Map lights
- Sun visors
- C.B. wire prep

Optional Cab Conveniences

- Review monitor system
- Sideview camera monitor system (requires rearview monitor system)
- Defroster fans
- Power mirrors w/defrost

Interior

- 19" LCD TV (29R & 35J) front overhead
- 20" LCD TV (37L) dining area
- 37" LCD TV (31E & 37L) mid coach
- Satellite system ready
- Cab wraparound curtain
- Mini blinds (lounge and dinette)
- OnePlace system center

- Roof vent (lounge)

Optional Interior

- Electric fireplace (37L only)
- 19" LCD TV w/remote (front overhead) (31E only)
- 26" LCD TV (dining area) (37L only)
- 32" TV (front overhead) (29R and 35L only)
- Interior Upgrade Package: rope lighting (N/A 37L), range back splash Dream Dinette dining table (N/A 37L), range cover, Titanium Touch stainless finish refrigerator doors, galley sink covers, 2 throw pillows, single control lavatory faucet
- Day/night pleated shades (lounge and dinette)
- Dual-glazed, thermo-insulated windows
- Vinyl floor covering (lounge)
- Satellite dish antenna
- Power roof vent (lounge)

Galley

- Laminated countertops
- 2 door refrigerator/freezer
- Microwave oven
- 3-burner range top w/drawers below
- Vented range hood
- Mini blinds

Optional

- Microwave/convection oven
- 3 burner range w/oven

Bath

- Laminate countertop
- Handheld shower head
- Skylight
- Power roof vent

Bedroom

- King Serta innerspring mattress (35J & 37L)
- Queen Serta innerspring mattress (29R & 31E)
- Foam mattress (bunk beds 35J)
- Pleated shades

Optional Equipment

- 2 DVD players w/headphones, 8.5" LCD monitors (bunk area) (35J)
- 20" LCD TV
- Day/night pleated shades

Exterior

- Automatic entrance door steps
- Lighted storage compartments

Optional Equipment

- Vinyl patio awning
- Acrylic patio awning w/metal wrap (requires full-body paint)
- Entertainment center w/AM/FM, CD player and remote
- Vetrolite smooth high-gloss skin
- Ladder
- Lower front protective mask w/full-body paint

Heating & Cooling System

- 14,800 BTU roof air conditioner (29R)
- Two high-efficiency roof air conditioners w/EMS (31E, 37J & 37L)
- 30,000 BTU low-profile furnace (29R)
- 35,000 BTU low-profile furnace (31E)
- 40,000 BTU low-profile furnace (35J, 37L)
- In-floor heat ducting

Optional Equipment

- One A/C heat pump (29R)
- Two high efficiency A/C heat pumps (31E, 35J, 37L)

Electrical System w/QuickPort

- AC/DC load center, DC fuses, 120V AC circuit breakers, 45-amp. converter/charger (29R)
- AC/DC electrical distribution system, AC/DC breaker panel, 45-amp. converter/charger w/remote (31E, 35J & 37L)
- 30-amp power cord
- 4,000 watt Cummins Onan MicroQuiet gas generator (29R)
- 5,500 watt Cummins Onan Marquis Gold gas generator (31E, 35J & 37L)
- 2 deep cycle, Group 31 batteries
- Chassis battery disconnect system
- PowerLine energy management system (N/A 29R)
- Automatic dual battery charge control
- Auxiliary start circuit

Optional Equipment

- 50-amp power cord (31E, 35J, 37L)
- 300-watt inverter (all except 37L)
- 600-watt inverter (37L)

Plumbing System w/QuickPort

- Service Center: cable TV input, city water hook-up w/diverter valve, 3" drainage valve, exterior wash station, portable satellite dish hook-up, power cord, 10' & apos; sewer hose
- 6-gallon water heater
- TrueLevel holding tank monitoring system
- Winterization Package: water heater bypass valve and siphon tube

Optional Equipment

- Exterior wash station w/pump switch
- 6 gallon water heater w/motoraid

Safety

- Seat belts
- Child seat anchor, forward facing dinette seat (N/A 37L)
- LP, smoke and carbon monoxide detectors
- 10 BC fire extinguisher
- Ground fault interrupter
- High-mount brake lights

See us for a complete list of features and available options!

All standard features and specifications are subject to change.