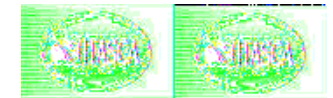
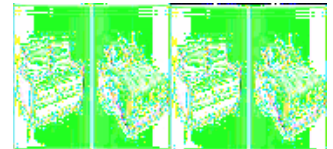
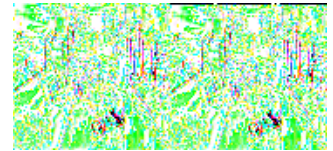


Itasca Sunova Motor Home Class A

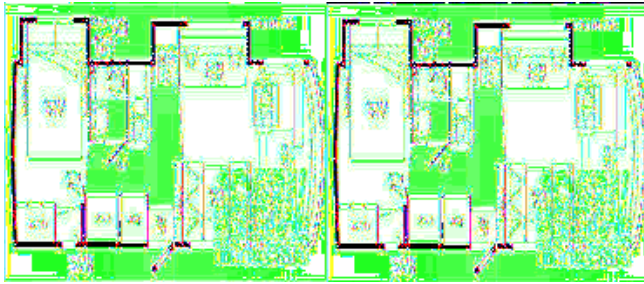


Want a good look at the countryside? See it all through a 2009 Itasca Sunova class A motorhome. You'll love the beautiful curved cabinetry featured in all models except the 37L, and love the optional full-body paint. This is definitely a coach that you'll want to be seen riding in.

Enjoy SmartSpace amenities that make the most of the available space in all Itasca coaches. You'll find the Sunova in four very distinct floorplans with double slideouts in all, plus a third slide in model 37L. Choose UltraLeather furniture and cab seats and your choice of three beautiful interior fabric decors. Add options like an available fireplace in model 37L, a rear view monitor system, or an interior upgrade package with rope lighting, stainless steel refrigerator doors and Dream Dinette dining table (N/A 37L) to name a few.

With a Itasca Sunova class A motorhome you'll even get to choose between a Ford and Workhorse chassis. How's that for options? Make each trip an dream come true, and do it all without breaking the bank in a 2009 Itasca Sunova. The view is spectacular!

2009 Sunova 29R



Itasca Sunova Class A Motor Home w/Double Slideouts, Rear Queen Bed Slide w/Nightstands, Wardrobe, Opt. TV, Folding Door, Private Toilet Area w/Vanity & Sink & Med. Cabinet, Separate Shower, Refrigerator, Storage, Booth Dinette, TV Above Cab Area, Sofa/Bed & 3 Burner Range Slideout w/Exterior StoreMore, Double Kitchen Sink, Overhead Cabinets, Choice of Engine & Chassis and Much More. Ford Specifications Shown.

Sunova 29R Specifications

Specification	Description
Length	29'9"
Width	8'5"
Height	12'3"
Interior Height	6'8"
Hitch Weight	5,000 lbs
Gross Weight	18,000 lbs
Axle Weight	18,000 lbs
Fresh Water Capacity	84 gals
Grey Water Capacity	41 gals
Black Water Capacity	37 gals
Furnace BTU	30,000
Sleeps	6
Engine	6.8L Triton V-10
Chassis	Ford F-53
Slides	2
Exterior Color	2 Standard & 3 Full Body Paint Choices
Interior Color	Prestwick, Silver Fir, Boardwalk

2009 Sunova 31E



Sunova Class A by Itasca w/Double Slideouts and Choice of Engine & Chassis, Rear Queen Bed Slide w/Nightstands, Wardrobe w/Drawers, Storage Cabinet w/Location for Opt. TV Above, Dbl. Sliding Door, Side Aisle Bath w/Corner Shower, Sink & Toilet, Storage Cabinet, 37" TV, Booth Dinette & Sofa Bed or Slightly Larger Sleeper, Opt. TV Above Cab Area, Lounge Chair or Opt. Euro Chair w/Ottoman, Dbl. Sink, 3 Burner Range, Refrig., & More. Shown w/Ford Specs, Workhorse Available.

Sunova 31E Specifications

Specification	Description
Length	32'4"
Width	8'5"
Height	12'3"
Interior Height	6'8"
Hitch Weight	5,000 lbs
Gross Weight	22,000 lbs
Axle Weight	22,000 lbs
Fresh Water Capacity	84 gals
Grey Water Capacity	44 gals
Black Water Capacity	38 gals
Furnace BTU	35,000
Sleeps	6
Engine	6.8L Triton V-10
Chassis	Ford F-53
Slides	2
Exterior Color	2 Standard & 3 Full Body Paint Choices
Interior Color	Prestwick, Silver Fir, Boardwalk

2009 Sunova 35J



Class A w/Bunks & Double Slideout, Rear King Bed w/Nightstands, Chest of Drawers w/Opt. TV Above/Wardrobe & Bunk Bed Slide w/Opt. DVD/LCD Monitors, Tub/Shower, Vanity w/Sink & Toilet, Pantry, Refrigerator, 3 Burner Range, Dbl. Kitchen Sink, Lounge Chair or Euro Chair, TV Above Cab Area, Booth Dinette & 48"x76" Sofa Bed or Opt. 60"x80" Sofa Sleeper, Exterior StoreMore on Front Slideout, Choice of Engine & Chassis & More. Ford Specifications Shown, Workhorse Avail. Sunova 35J Specifications

Specification	Description
Length	35'3"
Width	8'5"
Height	12'3"
Interior Height	6'8"
Hitch Weight	5,000 lbs
Gross Weight	20,500 lbs
Axle Weight	21,000 lbs
Fresh Water Capacity	75 gals
Grey Water Capacity	48 gals
Black Water Capacity	44 gals
Furnace BTU	40,000
Sleeps	8
Engine	6.8L Triton V-10
Chassis	Ford F-53
Slides	2
Exterior Color	2 Standard & 3 Full Body Paint Choices
Interior Color	Prestwick, Silver Fir, Boardwalk

Sunova Features:

Standard Features (2009)

Automotive/Chassis

- Ford Chassis - 6.89L SOHC Triton V10 362 Hp, 5 Speed automatic overdrive transmission, hydraulic brakes, 130 amp. alternator
- Hydraulic Brakes
- 4-wheel ABS
- 7-pin trailer wiring
- Stainless Steel Wheel Liners
- Trailer hitch: 5,000 lb drawbar/500 lbs maximum vertical tongue weight w/7-pin connector

Options

- Automatic leveling jacks w/3-position controls
- Workhorse W18 Chassis, 340 hp 8.1L GM Vortec V8 engine, 4L85-E 4-speed transmission, 145-amp alternator (29R)
- Workhorse W22 Chassis, 340 hp 8.1L GM Vortec V8 engine, Allison 1000 MH 6 speed transmission, 145 amp alternator (31E, 35J, 37L)

Cab Area & Driver Conveniences

- Fabric cab seats w/armrests, lumbar support, multi adjustable slide/recliner/swivel
- AM/FM radio w/CD/DVD player, alarm clock, weather band, ipod/MP3 input remote
- Chassis/house battery radio power switch
- Tilt steering wheel
- Cruise control
- Map lights
- Sunvisors
- C.B. wire prep

Options

- Rear view monitor system
- Side-view camera monitor system (requires rear view monitor system)
- Defroster fans
- Power mirrors w/defrost

Interior

- 19" LCD TV (29R & 35J) (front overhead)
- 20" LCD TV (37L) (dining area)
- 37" LCD TV (31E & 37L) (mid coach)
- Satellite system ready
- Cab wraparound curtain
- Mini blinds (lounge and dinette)
- OnePlace systems center
- Roof vent (lounge)

Options

- Day/night pleated shades (lounge, bedroom and dinette)
- Dual glazed thermo insulated windows
- Vinyl floor covering(lounge)
- Satellite dish antenna
- Powered roof vent (lounge)
- Interior Upgrade Package: rope lighting (NA 37L), range back splash, Dream Dinette™ dining table (NA 37L), range cover, refrigerator door inserts, kitchen sink covers, 2 throw pillows, single-control lavatory faucet
- Electric fireplace (37L)
- 19" LCD TV w/remote(front overhead) (31E)
- 26" LCD TV (dining area) (37L)
- 32" LCD TV (front overhead) (29R, 25J)

Kitchen

- Laminate countertops
- 2 door refrigerator/freezer
- Microwave oven
- 3 burner range top w/drawers below
- Vented range hood
- Mini blinds

Options

- Microwave/convection oven
- 3 burner range w/oven

Bath

- Laminate countertop
- Handheld shower head
- Skylight
- Powered roof vent

Bedroom

- King Serta innerspring mattress (35J & 37L)
- Queen Serta innerspring mattress (29R & 31E)
- Foam mattress (bunk beds 35J)
- Pleated shades

Options

- 2 DVD players w/headphones, 8.5" LCD monitors (bunk area) (37J)
- 20" LCD TV
- Day/night pleated shades

Exterior

- Automatic entrance door step
- Lighted storage compartments

Options

- Vinyl patio awning (n/a 37L)
- Acrylic patio awning w/metal wrap (requires full body paint) (37L with or without full body paint)

- Entertainment center w/AM/FM stereo, CD player and remote
- Smooth high gloss skin
- Ladder
- Lower front protective mask (w/full body paint)

Heating & Cooling System

- 14,800 BTU roof air conditioner (29R)
- Two high efficiency roof air conditioners w/EMS (31E, 35J & 37L)
- 30,000 BTU low profile furnace (29R)
- 35,000 BTU low profile furnace (31E)
- 40,000 BTU low profile furnace (35J & 37L)
- In floor heat ducting

Options

- One A/C heat pump (29R)
- Two high efficiency A/C heat pumps (n/a 29R)

Electrical System w/QuickPort

- AC/DC load center, DC fuses, 120V AC circuit breakers, 45-amp. converter/charger (29R)
- AC/DC electrical distribution system, AC/DC breaker panels, 45-amp. converter/charger w/remote (31E, 35J & 37L)
- 30-amp. power cord
- 4,000 watt Cummins Onan MicroQuiet gas generator (29R)
- 5,500 watt Cummins Onan Marquis Gold gas generator (31E, 35J & 37L)
- 2 deep cycle Group 31 batteries
- Battery disconnect system (chassis)
- PowerLine energy management system (NA 29R)
- Automatic dual battery charge control
- Auxiliary start circuit

Options

- 50 amp power cord (n/a 29R)
- 300 watt inverter (n/a 37L)
- 600 watt inverter (37L only)

Plumbing System w/QuickPort

- Service Center: cable TV input, city water hook-up w/diverter valve, 3" drainage valve, exterior wash station, portable satellite dish hook-up, power cord, 10' sewer hose
- 6 gallon water heater
- TrueLevel holding tank monitoring system
- Winterization Package: water heater bypass valve and siphon tube

Options

- Exterior wash station w/pump switch
- 6 gallon water heater w/motoraid

Safety

- Seat belts
- Child seat anchor (forward facing dinette seat, (NA 37L)

- LP, smoke and carbon monoxide detectors
- 10 BC fire extinguisher
- Ground fault interrupter
- High mount brake lights

See us for a complete list of features & available options!

All standard features and specifications are subject to change.