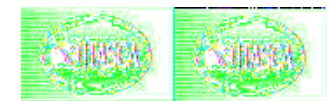
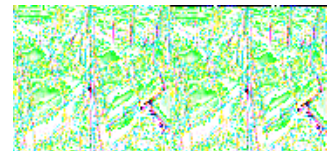
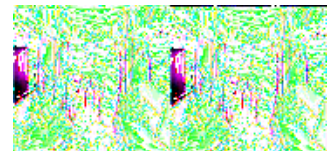
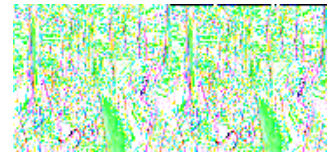


## Itasca Meridian Motor Home Class A - Diesel



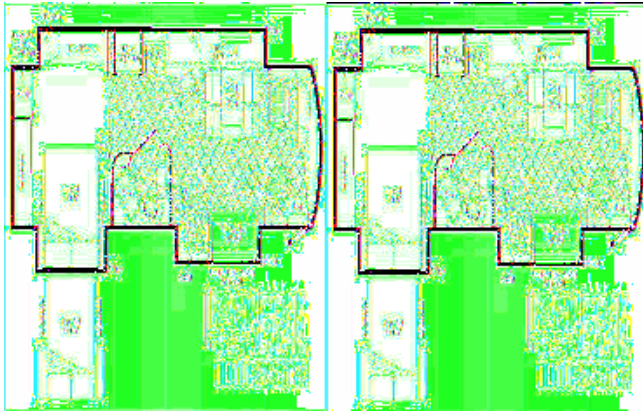
Check out the Itasca Meridian class A diesel motorhome. Completely redesigned from the ground up, it is sure to remain a favorite among diesel lovers. Powered by a 350 hp Cummins engine on a Freightliner XC Chassis with a 29,410 lb. GVWR this coach can take you on any journey to wish to go.

Available in your choice of three floorplans with double or triple slideouts to maximize your living space. New model 34Y features a full wall slideout on the drivers side with a king bed slide in the master bedroom for a comfortable nights rest. Model 39Z also has a king bed slideout for sleeping.

You'll love the full kitchen and bath amenities and SmartSpace design to give you plenty of storage space and user friendly features in all the models. For example, the BenchMark full comfort dinette provides you a comfortable place to dine and also converts to a sleeping space at night. It also provides you additional storage under each seat cushion. Now that's creative thinking!

Let a Itasca Meridian take you on your next adventure. It's the class A that you'd be proud to call home!

## 2009 Meridian 34Y

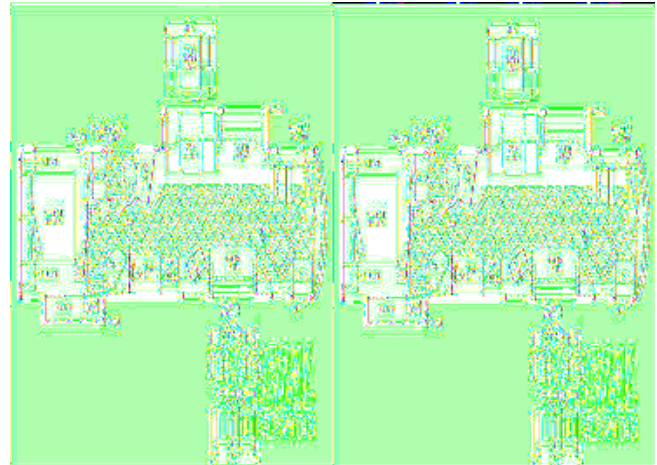


Triple Slide Meridian Class A Diesel Coach by Itasca w/Rear King Bed Slideout or Opt. Queen, Nightstands, Wardrobe, Storage or Opt. Wash/Dryer, Chest of Drawers, Pantry, 4-Door Refrigerator, 3 Burner Range, Double Kitchen Sink, Dining Table & Chairs, 37" LCD TV, Buffet, End Table, Rest Easy Sofa & Euro Chair w/Ottoman Slideout, Opt. Theater Seating IPO Sofa, Bath w/Corner Shower, Toilet & Lav., Overhead Storage Throughout and Much More!

Meridian 34Y Specifications

Specification	Description
Length	34'7"
Width	8'5"
Height	12'2"
Interior Height	7'2"
Hitch Weight	10,000 lbs
Gross Weight	29,410 lbs
Axle Weight	29,410 lbs
Fresh Water Capacity	92 gals
Grey Water Capacity	81 gals
Black Water Capacity	57 gals
Furnace BTU	40,000
Sleeps	4
Engine	Cummins ISB XT 6.7L
Chassis	Freightliner
Slides	3
Exterior Color	5 color options
Interior Color	Carmel Canyon, Cinderblock, Breezy Point

## 2009 Meridian 37H

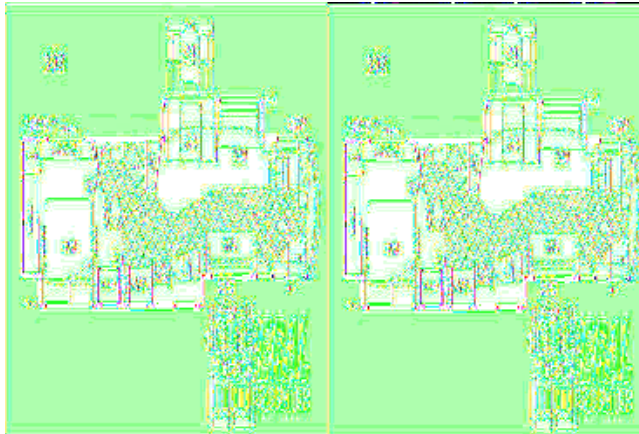


Double Slide Itasca Meridian Class A Diesel Coach w/Rear Queen Bed w/Nightstands, Slideout Wardrobe & Storage Cabinet, TV, Double Sliding Door Between Bedroom & Bath Area, Angle Shower, Private Toilet Area w/Storage Closet or Opt. Washer/Dryer, Pantry, 4-Door Refrigerator, 3 Burner Range, Double Kitchen Sink, Sofa Bed or Opt. Euro Chairs w/Pull-Out Table, End Table, Booth Dinette or Dining Table & Chairs & Rest Easy Sofa Slideout and Much More.

Meridian 37H Specifications

Specification	Description
Length	37'5"
Width	8'5"
Height	12'2"
Interior Height	7'2"
Hitch Weight	10,000 lbs
Gross Weight	29,410 lbs
Axle Weight	29,410 lbs
Fresh Water Capacity	92 gals
Grey Water Capacity	66 gals
Black Water Capacity	64 gals
Furnace BTU	40,000
Sleeps	7
Engine	6.7L Cummins ISB
Chassis	Freightliner XC
Slides	2
Exterior Color	5 color options
Interior Color	Carmel Canyon, Cinderblock, Breezy Point

## 2009 Meridian 39Z



Double Slide Meridian Class A w/Rear King Bed/Nightstands/Wardrobe/4-Door Refrigerator/Freezer/3 Burner Range/Double Kitchen Sink Slideout, Sofa Bed or Opt. Euro Chairs w/Pull-Out Table, Rest Easy Sofa & Booth Dinette or Dining Table & Chairs Slideout, 37" TV Ent. Center, Angled Bath w/Shower, Lav., Double Sliding Door Entrance, Opt. Washer/Dryer, Large Wardrobe in Bedroom, Bench Seat w/TV Above and Much More.

### Meridian 39Z Specifications

Specification	Description
<b>Length</b>	39'1"
<b>Width</b>	8'5"
<b>Height</b>	12'2"
<b>Interior Height</b>	7'2"
<b>Hitch Weight</b>	10,000 lbs
<b>Gross Weight</b>	29,410 lbs
<b>Axle Weight</b>	29,410 lbs
<b>Fresh Water Capacity</b>	92 gals
<b>Grey Water Capacity</b>	75 gals
<b>Black Water Capacity</b>	64 gals
<b>Furnace BTU</b>	40,000
<b>Sleeps</b>	7
<b>Engine</b>	6.7L Cummins ISB
<b>Chassis</b>	Freightliner XC
<b>Slides</b>	2
<b>Exterior Color</b>	5 color choices
<b>Interior Color</b>	Carmel Canyon, Cinderblock, Breezy Point

# Meridian Features:

## Standard Features (2009)

### Automotive/Chassis

- Freightliner XC Chassis
- 350 HP Cummins ISB XT 6.7L turbo charged diesel
- Rear radiator
- Allison 6 speed electronic ignition
- NeWay front and rear air suspension
- 160 amp alternator
- Exhaust brake
- 7-pin trailer wiring
- 4-wheel ABS
- Stylized aluminum wheels
- Automactic leveling jacks
- Trailer Hitch 10,000 lb drawbar/500-lb maximum vertical tongue weight

### Cab Area & Driver Conveniences

- Cab seats w/armrest, lumbar support, multi-adjustable slide/swivel/recline
- Power driver's seat
- Passenger seat w/footrest
- RV Radio: AM/FM stereo, CD player, weather band and 2 remotes
- Cruise control
- Powered step well cover
- Powered sunvisors
- Defroster fans
- Driver and passenger window shades
- Chassis/house battery radio power switch
- Tilt/telescoping steering wheel
- Map lights
- Keyless entry
- Rearview monitor system: black/white monitor w/single camera and 1 way audio
- C.B. wire circuit
- Auxiliary start circuit
- Slider cab windows w/screen

### Options

- Power passenger seat w/footrest
- Alpine GPgo GPS on the go navigation system (requires color rearview monitor system)
- Multi dish CD changer w/remote
- Sirius satellite radio w/6month paid subscription and ipod interface cable connector
- Sideview camera system
- Color rearview monitor system (w/rear and side-view cameras, one way audio)

### Interior

- 37" LCD HDTV

- Home theater sound system; AM/FM stereo, CD/DVD player, receiver, 5 speakers & subwoofer
- Satellite system ready
- Video selection system
- Cab wraparound curtain
- Mini blinds (kitchen and bath)
- Day/night pleated shades (lounge, dinette and bedroom)
- OnePlace systems center
- Dual-glazed/thermo-insulated/flush mounted windows
- Rest Easy single-control multi position lounge

### Options

- Washer/dryer combo
- King-Dome HD ready in motion satellite system w/dual LNB(front and bedroom)
- King-Dome automatic satellite system w/dual LNB (front and bedroom)
- 26" LCD HDTV (front) (n/a 34Y)
- Rest Easy single control multiposition lounge w/UltraLeather
- Rest Easy dual control multiposition lounge w/UltraLeather

### Kitchen

- Corian countertops
- 4 door refrigerator/freezer w/icemaker
- Microwave/convection over w/vented range fan
- 3 burner Amana range top w/storage below
- Corian range and sink covers
- Filtered cold water faucet

### Bath

- Corian countertops
- Handheld showerhead

### Bedroom

- 26" LCD HDTV
- Innerspring mattress (37H &39Z)
- King-size Ideal Rest body conforming memory foam mattress (34Y)

### Options

- Sleep Number bed
- Stereo System AM/FM stereo, CD/DVD player, alarm clock, ipod/MP3 input, headphone jack
- Queen bed w/innerspring mattress (34Y only)

### Exterior

- Entertainment Center: AM/FM stereo, CD player, remote, radio antenna, DC and AC receptacles
- Amplified TV antenna system
- Electric patio awning w/wind sensor and remote
- KeyOne lock system
- Lighted storage compartments
- Rotocast compartments
- Automatic entrance steps
- Ladder

- Full width mud guard
- Air horns (under hood)
- Electric mirrors w/defrost and integrated turn signal

### Options

- Entertainment Center: 32" TV, AM/FM stereo, DVD player w/remote, radio antenna
- Folding step ladder
- Electric entrance awning
- Lower front protective mask

### Heating & Cooling System

- TrueAir residential central air conditioning w/heat pump
- 40,000 BTU furnace
- Powered roof vent (bath and kitchen)

### Electric System w/QuickPort

- Service Center: lighted, cable input, power cord, shoreline/generator automatic changeover switch, portable satellite hookup
- 50-amp power cord
- 2,000 watt inverter/charger w/remote panel
- 8,000 watt Cummins Onan Quiet Diesel generator
- 4 deep cycle Group 31 marine/RV batteries
- Battery disconnect system (coach and chassis)
- PowerLine energy management system
- Automatic dual battery charge control
- Solar panel battery charger
- Chassis battery charger/maintainer

### Options

- Generator automatic start system

### Plumbing System w/QuickPort & QuickConnect

- Service Center: pressurized city water hook up w/diverter fill, drain for fresh water, drainage valves, exterior wash station w/pump switch, holding tank flush system, 10' sewer hose, lights
- 10 gallon water heater w/motoraid
- TrueLevel holding tank monitoring system
- Winterization Package: water heater bypass valve and siphon tube
- Full coach water filtration system
- LP tank
- Heated holding tank compartment

### Safety

- Seat belts
- Child seat anchor(dinette)
- LP, smoke and carbon monoxide detectors
- 10 BC fire extinguisher
- Ground fault interrupter
- High mount brake lights

**See us for a complete list of features and available options!**

All standard features and specifications are subject to change.



**Brownstown 734-284-5500**  
**Birch Run 989-624-700**  
**Mt. Clemens 586-954-3600**

**Waterford 248-674-0346**  
**Wayland/Grand Rapids 269-792-9118**  
**Wixom 248-349-0900**