

Winnebago Destination Motor Home Class A - Diesel

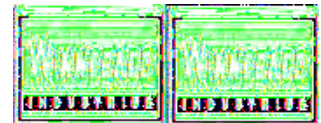
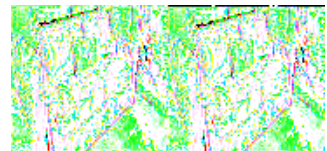


The 2009 Winnebago Destination class A motorhome is leading the pack with three innovative floorplans loaded with standard features and plenty of storage for all of your gear. You'll love the beautiful contemporary styling of the curved cabinetry and the 7'2" ceiling height. You also have a choice of three different interior fabric decors to make it your own.

With the Destination you can have a gas or diesel pusher. It's the first coach to take advantage of the Workhorse UFO™ chassis with its powerful 8.1L, 340 hp rear engine. Or, you may wish to choose the Freightliner® XC diesel chassis with a Cummins® 6.7L diesel engine.

All floorplans offer double or triple slideouts to help maximize your interior living space. With choices like a 4-door refrigerator and free standing dining table & chairs in each and an optional king bed in model 39N and 39W you'll find the Destination has everything that you need. There is an abundance of innovative storage space throughout the coach with the use of the SmartSpace design philosophy and the 37" LCD TV is great for your evening entertainment.

For your next adventure choose a Winnebago Destination class A gas or diesel coach.



2009 Destination 37G



Double Slide Destination Class A w/Rear Queen Bed w/Nightstands, Wardrobe & Storage Cabinet Slide, TV, Double Sliding Door Between Bed & Bath, Private Toilet Area w/Storage or Opt. Washer/Dryer, Shower, Lav., Pantry, Refrig. w/4 Door Opt, 3 Burner Range, Dbl. Kitchen Sink, Euro Chair w/Ottoman, Corner End Table Cabinet, Opt. TV Above Cab, Sofa Bed & Booth Dinette Slide or Opt. Round Dining Table & Chairs & Rest Easy Sofa, 37" LCD TV and More! Opt. Gas Eng. w/Workhorse Chassis Avail.

Destination 37G Specifications

Specification	Description
Length	37'10"
Width	8'5"
Height	12'4"
Interior Height	7'2"
Hitch Weight	10,000 lbs
Gross Weight	27,910 lbs
Axle Weight	27,910 lbs
Fresh Water Capacity	92 gals
Grey Water Capacity	66 gals
Black Water Capacity	64 gals
Furnace BTU	40,000
Sleeps	4
Engine	Cummins ISB 6.7L
Chassis	Freightliner XC
Slides	2
Interior Color	Iron Gate, Chesterfield, Cityscape

Destination Features:

Standard Features (2009)

Engine & Chassis

- Freightliner XC Chassis
- 340 hp Cummins ISB 6.7L turbo charged diesel engine
- Allison 6 speed transmission
- NeWay front and rear air suspension
- 160-amp alternator
- Engine exhaust brake
- 4-wheel ABS
- Rear radiator
- Stainless steel wheel liners
- Automatic leveling jacks w/3 position controls
- 7-pin trailer wiring
- Trailer hitch: 10,000 lb. drawbar/500 lbs. maximum vertical tongue weight

Optional Engine & Chassis

- Workhorse UFO Chassis
- 340 hp GM Vortec 8100 V8 gas engine
- Allison 2000 series automatic 6 speed transmission with two overdrive gears
- 145-amp. alternator
- Trailer hitch: 5,000 lb. drawbar/500 lbs. maximum vertical tongue weight

Cab Conveniences

- Cab seats w/armrests, lumbar support, multi-adjustable slide/recline/swivel
- RV Radio®: AM/FM stereo, CD player, weather band, remotes
- Power steering w/tilt wheel
- Electric steering w/tilt wheel
- Cruise control
- Sunvisors
- Defroster fans
- Chassis/house battery radio power switch
- Map lights
- Rearview monitor system w/black/white monitor and 1 way audio
- C.B. wire prep
- Auxiliary start circuit
- Full-slider cab windows w/screen

Options

- Power driver's seat
- Passenger seat w/footrest
- Sirius satellite radio w/6-month paid subscription and ipod interface cable connector
- Side view monitor system
- Powered sunvisors (39N only)

Interior

- 37" LCD TV
- Home Theater Sound System: AM/FM stereo, amplifier, CD/DVD player, receiver, 5 speakers and subwoofer
- Satellite system ready
- Video selection system
- Cab wraparound curtain
- Pleated shades (lounge and dining)
- OnePlace systems center
- Dual glazed/thermo-insulated/flush mounted windows

Options

- Washer/dryer combo
- Automatic King Dome satellite dish antenna, dual LNBs (front and bedroom)
- 26" LCD TV (front overhead)
- Rest easy single control multi-position lounge
- Rest Easy single control multi-position lounge w/UltraLeather

Galley

- Corian solid surface countertops
- 2-door refrigerator/freezer (39N 4-door w/ice maker)
- Microwave w/vented range fan
- 3-burner Amana range top w/storage below
- Solid surface and sink covers
- Mini blinds
- Powered roof vent

Options

- Stainless steel microwave/convection oven w/vented range fan
- 4-door refrigerator freezer w/ice maker (n/a 39N)

Bath

- Built in shower seat (NA 39N)
- Laminated countertop
- Mini blinds (37G)
- Powered roof vent

Bedroom

- Innerspring mattress
- 20" LCD TV w/remote (26" in 39N)
- Underbed storage (37G)
- Pleated shades
- Bunk beds w/wardrobe w/privacy doors (39N)

Options

- Stereo System: AM/FM stereo, CD/DVD player, alarm clock, ipod/MP3 input, headphone jack
- 26" LCD TV (n/a 39N)
- King bed Serta mattress (39W only)
- 2 DVD players w/LCD monitors (bunk area) (39N only)
- King bed w/electric adjustment and ideal rest memory foam mattress (39N only)

Exterior

- Patio awning
- KeyOne lock system
- Lighted storage compartments
- Amplified TV antenna system
- Automatic entrance steps
- Ladder

Options

- Entertainment Center: AM/FM stereo, DVD player, 32" LCD TV, remotes (39N only)
- 19' 6" electric patio awning w/wind sensor
- Lower front protective mask
- 8' manual or electric patio awning w/wind sensor (39W only)
- Electric entry door awning (39N only)

Heating & Cooling System

- TrueAir residential central air conditioning w/heat pump
- 40,000 BTU furnace

Electrical System w/QuickPort

- Service Center: lighted, cable input, power cord, shoreline/generator automatic changeover switch, portable satellite hookup
- 50-amp power cord
- 600 watt inverter/charger w/remote panel
- 6,000 watt Cummins Onan quiet diesel generator
- 2 deep cycle grouped 31 marine/RV batteries
- Battery disconnect system (coach and chassis)
- PowerLine energy management system
- Automatic dual battery charge control
- Solar panel battery charger
- Chassis battery charger/maintainer

Options

- 5,500 watt Cummins Onan Marquis Gold generator (w/Workhorse chassis) (n/a 39N)

Plumbing System w/QuickPort

- Service Center: lighted, pressurized city water hook up w/diverter fill, freshwater drain, drainage valves, exterior wash station w/pump switch, holding tank flushing system, 10' sewer hose
- 10 gallon water heater w/motoraid
- TrueLevel holding tank monitoring system
- Winterization Package: water heater bypass valve and siphon tube
- Full coach water filtration system
- LP tank
- Heated holding tank compartment

Safety

- Seat belts
- Child seat anchor(dinette)
- LP, smoke and carbon monoxide detectors

- 10 BC fire extinguisher
- Ground fault interrupter
- High-mount brake lights

See us for a complete list of features and available options!

All standard features and specifications are subject to change.