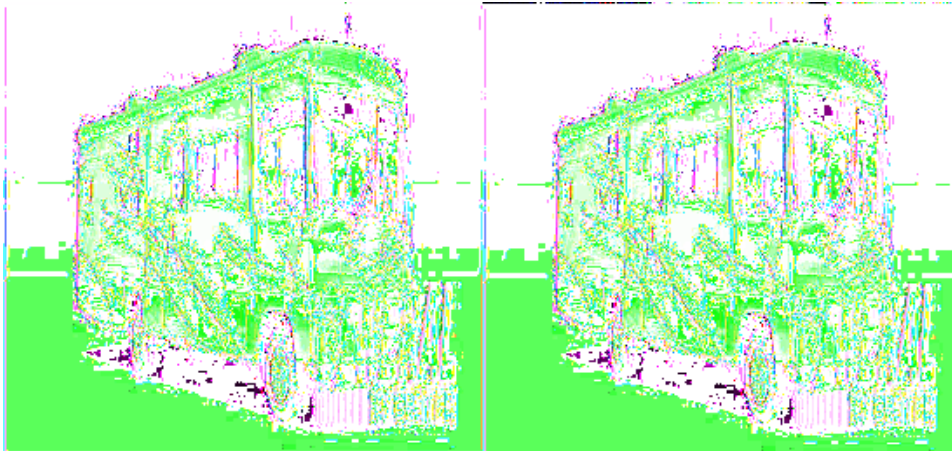


Itasca Sunstar Motor Home Class A

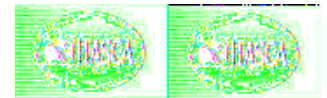
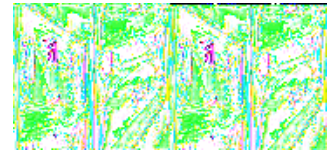
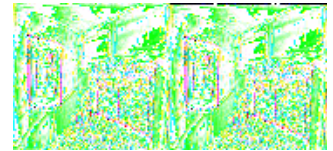
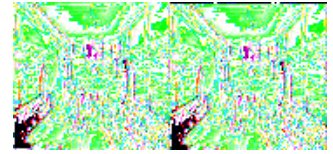


Everything looks brighter when you view it from inside a 2009 Itasca Sunstar Class A coach. Available in three floorplans that offer you a wide variety of amenities and options so you can customize it to fit your needs and lifestyle. Models 32K and 26P, which are new for 2009, include front and rear slideouts that provide even more living space. All models have the option of the standard Ford chassis or an available Workhorse chassis if you like.

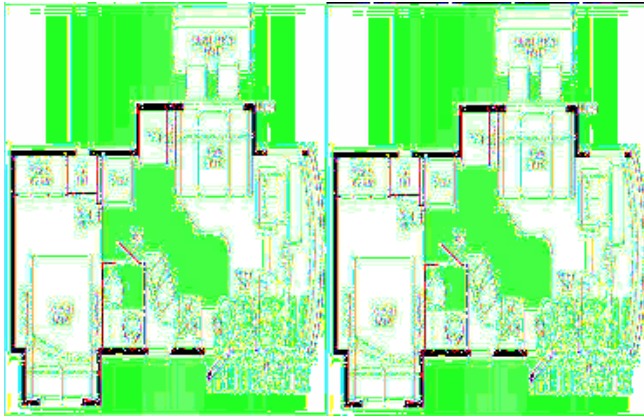
Choose one of three interior fabric decors to pair with the beautiful Sierra Maple cabinetry that will provide plenty of storage space for all of your things. You'll also find additional storage below the sofa and dinette. These two pieces of furniture also easily convert to comfortable beds for more sleeping space. Each model also comes standard with a 19" LCD TV which can be upgraded to a 32" LCD TV for your entertainment.

A full featured galley in each model includes a large pantry, spacious countertops and appliances for all your mealtime needs. With a microwave oven, refrigerator/freezer, vented range hood and three burner range with an available oven you can cook all of your families favorite meals while on the road.

Let a little sunshine in to your life with an Itasca Sunstar Class A motorhome today!



2009 Sunstar 26P



Double Slide Itasca Sunstar Class A Motorhome w/Rear Queen Bed Slideout w/Nightstands, Wardrobe w/Drawers, TV Shelf, Folding Door Separating Bedroom From Bath w/Shower, Private Toilet Area w/Sink, Refrigerator/Pantry & Booth Dinette or Opt. Sofa/Bed w/2 Tables Slideout, TV Location Above Cab Area, Lounge Chair, 3 Burner Range w/Microwave, Double Kitchen Sink, Overhead Cabinets, Engine & Chassis Choice and More! Ford Specifications Shown, Workhorse Chassis Available.

Sunstar 26P Specifications

Specification	Description
Length	26'10"
Width	8'5"
Height	12'4"
Interior Height	6'8"
Hitch Weight	5,000 lbs
Gross Weight	16,000 lbs
Axle Weight	17,500 lbs
Fresh Water Capacity	64 gals
Grey Water Capacity	38 gals
Black Water Capacity	43 gals
Furnace BTU	30,000
Sleeps	4
Engine	6.8L V-10 Triton
Chassis	Ford F-53
Slides	2
Exterior Color	6 Color Options w/Standard or Full Body Paint
Interior Color	Cloudburst, Warm Glow, Nutmeg

2009 Sunstar 30B



Single Slide Class A w/Rear Queen Bed, Nightstand, Wardrobe, Private Toilet Area w/Lav. & Med. Cabinet, Folding Door To Bedroom, Shower, Pantry/Storage Cabinet, Refrigerator, 3 Burner Range, Double Kitchen Sink, Lounge Chair, TV Above Cab Area, Sofa Bed & Booth Dinette Slideout, Choice of Engine & Chassis and Much More. Ford Specifications Shown. Workhorse Chassis Available.

Sunstar 30B Specifications

Specification	Description
Length	30'11"
Width	8'5"
Height	12'4"
Interior Height	6'8"
Hitch Weight	5,000 lbs
Gross Weight	18,000 lbs
Axle Weight	18,000 lbs
Fresh Water Capacity	62 gals
Grey Water Capacity	57 gals
Black Water Capacity	41 gals
Furnace BTU	30,000
Sleeps	6
Engine	6.8L Triton V-10
Chassis	Ford F-53
Slides	1
Exterior Color	6 Color Options w/Standard or Full-Body Paint
Interior Color	Cloudburst, Warm Glow, Nutmeg

2009 Sunstar 32K



Itasca Sunstar Bunkhouse Class A w/Double Slideouts, Rear Queen Bed w/Nightstands, Chest of Drawers w/TV Shelf Above/Wardrobe & Bunk Bed Slideout, Opt. Bunk DVD/LCD Monitor, Tub/Shower, Lav. & Toilet, Double Kitchen Sink, 3 Burner Range & U-Shaped Dinette Slideout, TV Location Above Cab Area, Sofa/Bed, Refrigerator, Pantry, Choice of Engine and Chassis & Much More. Ford Specifications Shown. Workhorse Available.

Sunstar 32K Specifications

Specification	Description
Length	33'0"
Width	8'5"
Height	12'4"
Interior Height	6'8"
Hitch Weight	5,000 lbs
Gross Weight	22,000 lbs
Axle Weight	22,000 lbs
Fresh Water Capacity	75 gals
Grey Water Capacity	46 gals
Black Water Capacity	44 gals
Furnace BTU	35,000
Sleeps	8
Engine	6.8L V-10 Triton
Chassis	Ford F-53
Slides	2
Exterior Color	6 Color Options w/Standard or Full-Body Paint
Interior Color	Cloudburst, Warm Glow, Nutmeg

Sunstar Features:

Standard Features (2009)

Automotive/Chassis

- Ford F53 Chassis
- 6.8L Super Duty V10 SOHC Triton 362 Hp engine
- 5 Speed TorqShift automatic transmission
- 130 Amp alternator
- 5,000 lb. trailer hitch w/7- pin connector
- Stainless steel wheel liners (4)
- 4 wheel ABS

Optional Equipment

- Automatic leveling jacks
- Spare tire

Chassis (26P & 30B only)

- Workhorse W16/W18 Chassis
- 8.1 V8 GM Vortec 340 Hp engine
- GM Hydra-matic 4L85-E Automatic 4-speed electronic transmission w/overdrive
- Hydraulic brakes
- 145-amp. alternator

Chassis (32K only)

- Workhorse W22 Chassis
- 8.1L V8 GM Vortec 340 Hp engine
- Allison 1000MH automatic 6-speed transmission w/overdrive and electronic control
- 145-amp alternator

Cab Conveniences

- Cab seats w/armrests, lumbar support, multi adjustable slide/recline/swivel
- AM/FM stereo w/CD player
- Chassis/house battery radio power switch
- Tilt steering wheel
- Cruise control
- Map lights
- Sunvisors
- C.B. wire prep

Options

- Rearview monitor system with one way audio
- Power mirrors w/defrost

Interior

- 19" LCD TV
- Amplified TV antenna system
- DVD cable ready (front overhead TV)
- Satellite system ready
- Cab wraparound curtain
- Pleated shades
- System center (26P & 32K)
- OnePlace systems center (30B)
- Roof vent

Options

- 32" LCD TV
- Vinyl floor covering (excludes cab, slideroom floor and bedroom)

Kitchen

- Laminate countertops
- 2 door refrigerator/freezer
- Microwave oven
- 3 burner range top w/storage below
- Vented range hood
- Mini blinds

Options

- 3 burner range w/oven

Bath

- Laminate countertop
- Handheld showerhead
- Skylight
- Powered roof vent

Bedroom

- Innerspring mattress
- Foam mattress (bunk beds, 32K)
- Pleated shades

Options

- 2 DVD players w/ 8.5" LCD monitors and headphones (bunk area) (32K only)

Exterior

- Automatic entrance door steps
- Antenna jack
- AC duplex outlet
- Storage compartments
- Mud flaps

Options

- Patio awning
- Ladder
- Premium high gloss skin

Heating & Cooling System

- 14,800 BTU roof air conditioner (26P & 30B)
- Two high efficiency roof air conditioners (32K)
- 30,000 BTU low profile furnace (26P & 30B)
- 35,000 BTU low profile furnace (32K)
- In-floor ducted heat
- PowerLine energy management system (32K)

Electric System

- AC/DC load center, DC fuses, 120V AC circuit breakers, 45 amp converter/charger (26P & 30B)
- AC/DC electric distribution system, AC/DC breaker panel, 45 amp, converter/charger w/remote (32K)
- 30 amp power cord
- 4,000 watt Cummins Onan MicroQuiet gas generator (26P & 30B)
- 5,500 watt Cummins Onan Marquis Gold gas generator (32K)
- 2 deep cycle, Group 24 batteries
- Battery disconnect system (chassis and coach)
- Automatic dual battery charge control
- Auxiliary start circuit

Options

- 50 amp power cord (32K only)

Plumbing System

- Service Center: cable TV input, city water hook-up w/diverter valve, drainage valves, portable satellite dish hookup, power cord
- 6 gallon water heater
- LP tank
- TrueLevel holding tank monitoring system
- Winterization package w/water heater bypass valve and siphon tube

Safety

- Seat belts
- Child seat anchor (forward facing dinette bench)
- LP, smoke and carbon monoxide detectors
- 10 BC fire extinguisher
- Ground fault interrupter
- High mount break light

See us for a complete list of features & available options!

All standard features and specifications are subject to change.