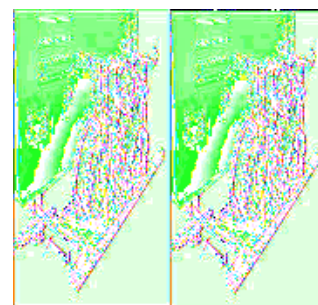
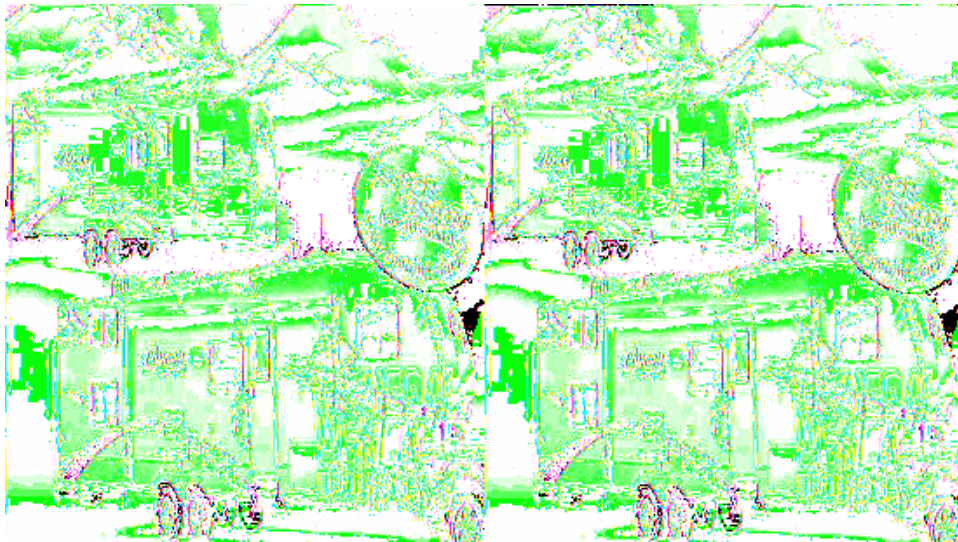


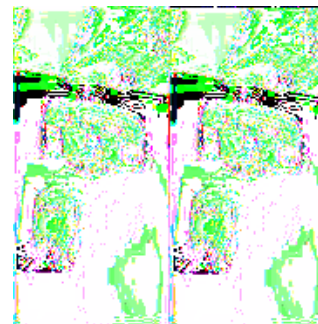
## Keystone RV Cougar East Travel Trailers



Consumers have chosen the ever-popular Cougar East RV by Keystone for five straight years, which makes it #1 in its class, price, and weight. So if you are looking for quality and want to be the first on your block with something different, the Cougar was designed with you in mind.

You'll love all the details and features in each of the single, double and triple slideout floorplans to choose from. With three decor choices you're sure to have that feeling of comfort and luxury. For the fifth wheel Cougar buyers you'll be telling all your friends about the patent pending Hitch Vision. Whether you are an experience RVer or first timer you'll be able to back up and align your truck to Cougar's extended hitch pin using only the built-in mirror for guidance. And with the specially designed front cap, the turning radius will be significantly improved and you'll be able to handle tight parking maneuvers even when attached to a short bed pick-up truck.

So, no matter which Cougar you choose, whether a West Coast or East Coast model, you'll know you're in a #1 RV in any Cougar travel trailer or fifth wheel from Keystone. Get your Cougar today!



## 2009 Cougar East 302RLS



Double Slide Cougar East Travel Trailer by Keystone  
 w/Rear Living Area w/2 Lounge Chairs, End Table,  
 Sofa/Booth Dinette Slideout, TV Area/Wardrobe, Double  
 Kitchen Sink, 3 Burner Range, Refrigerator, Pantry,  
 Wardrobe, Angle Shower, Lav., Front Queen Bed Slideout  
 w/Master Wardrobe, Laundry Chute & Dresser/TV Shelf,  
 Overhead Cabinets Throughout, Private Bedroom Entrance  
 and Much More!

### Cougar East 302RLS Specifications

Specification	Description
<b>Length</b>	33'9"
<b>Width</b>	8'0"
<b>Height</b>	11'2"
<b>Hitch Weight</b>	875 lbs
<b>Dry Weight</b>	7,710 lbs
<b>Cargo Weight</b>	1,965 lbs
<b>Fresh Water Capacity</b>	60 gals
<b>Grey Water Capacity</b>	38 gals
<b>Black Water Capacity</b>	38 gals
<b>Furnace BTU</b>	30,000
<b>Sleeps</b>	5
<b>Tire Size</b>	225/75R15D
<b>Slides</b>	2
<b>Interior Color</b>	Desert Sunset, Ocean Breeze, Summer Sage

# Cougar East Features:

## Standard Features (2009)

### Cougar East Coast Standards

- Executive Chef Kitchen, most models feature:
  - Real wood cabinet doors (not composite doors)
  - Dedicated trash can storage (holds 20-25 gal. container)
  - Oversized double pots and pans drawer
  - Lazy Susan in overhead cabinet (most models)
  - 100% larger pantry than competitors
  - 22" baker oven with metal baking rack
  - Deep 2-bowl sink with sink cover cutting boards
  - Residential metal kitchen drawer glides with steel ball bearings
- 5-sided aluminum construction
- Residential porcelain toilet with foot pedal
- Ultra lube hubs on axles (all models)
- Snap jack pins (all Fifth Wheels)
- All Fifth Wheel models under 12' exterior height (fit under your 12' door)
- Gel coated filon fiberglass
- 30,000 BTU furnace
- One-piece seamless rubber roof
- All windows in main slide-out open
- LCD TV (300 only)

### "Camping In Style" Package

- Day and Night Shades
- Laundry chute
- Black trim safety glass windows (tinted to keep the sun out)
- Microwave oven with turn style
- A & E awning
- Aluminum framed sidewalls, floors, front and rear
- 13,500 BTU air conditioner
- Raised-panel upper cabinet doors

### Value Package

- True home DVD system with speakers and separate zones (12 Volt compatible)
- Gas/electric water heater with fast recovery
- Residential tiled shower/tub surround
- TV antenna
- Cable hook-up
- Gel coated filon fiberglass

### Safety Must-Haves

- Manual backup on all main slide-outs
- T-mold strip on all slide-outs to keep slider sweeps on your slide-out (stays on in hot weather)
- Back up scare light and doorside light (great for night arrivals at

- campground)
- LP sensor
- Smoke detector
- Fire extinguisher
- Carbon monoxide detector

### **Dry Camping Features (For Those Who Want To Explore)**

- 12 Volt stereo
- Large fresh, grey and black tanks on all models
- All slide-out lights are 12 Volt
- Space for dual batteries
- Under 12' exterior height (on most models)to stay clear of low hanging limbs
- Entire underbelly enclosed to keep debris off tanks, water lines, etc.

### **Convenience Package**

- Outside shower\*
- Residential refrigerator front\*
- Spare Tire\*

\*Mandatory option

### **East Coast Options**

- Slide in/out bike/storage rack (except 1/2 ton series, 300/310SRX Models)\*
- Polar package (all TT and FW models)\*
- Hitch Vision\* (variations in truck size and user height may affect the mirrored image)
- Swivel rocker (276, 291, 292, 294, 302, 311)
- Second swivel rocker
- Free-standing dinette
- Hide-a-bed sofa
- Rear garage (281, 314 add 18")\*

\* Mandatory option

### **Decor**

- Desert Sunset
- Ocean Breeze
- Summer Sage

**See us for a complete list of features & available options!**

**All standard features and specifications are subject to change.**