

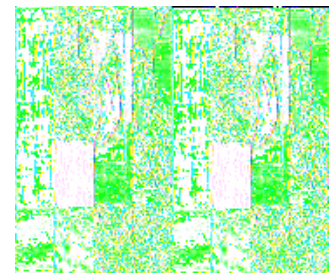
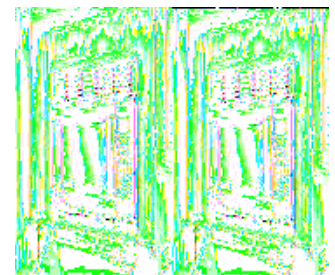
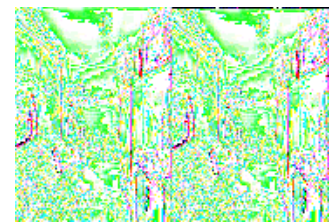
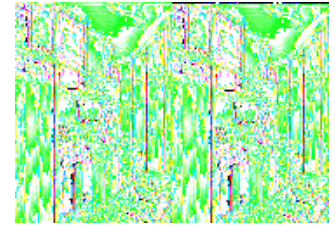
Jayco Jay Feather Sport Travel Trailers



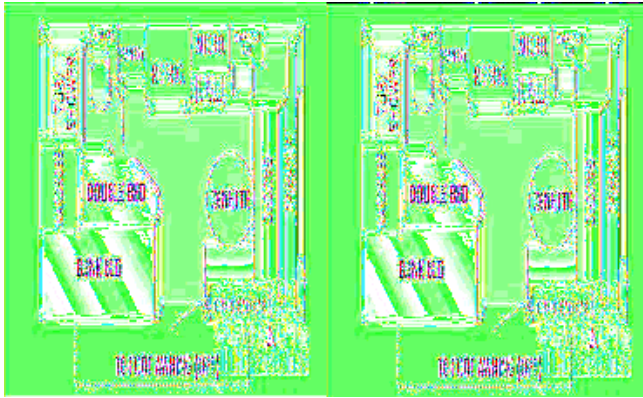
The Jayco Jay Feather Sport is the perfect ultra lightweight weekender travel trailer. It has everything you need and then some packed into its super light and super rigid framework. With its TuffShell vacuum-bonded laminated walls, roof and floor you'll find it easier and more aerodynamic to tow.

All Jay Feather Sport models have full kitchens, full baths, and are definitely full of fun. With exterior length from 16' to 21', the Jay Feather Sport is Jayco's most light weight, compact model, perfect for any trip. With comfortable, roomy interiors to the sleek exterior this trailer is ready when you are.

Don't put anymore adventures on hold, get a Jay Feather Sport travel trailer by Jayco and let life start happening to you!



2009 Jay Feather Sport 165

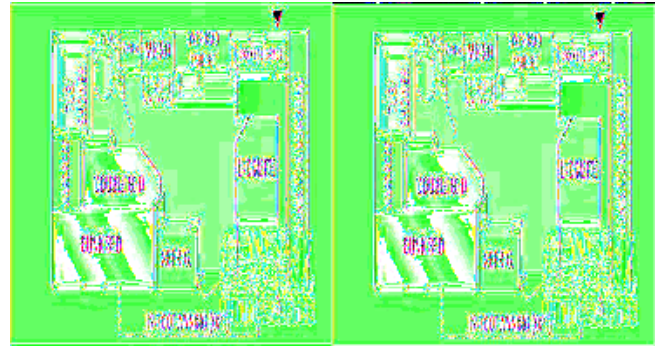


Jay Feather Sport Rear Corner Bunk Beds w/Lower Double Bed, Wardrobe, Rear Corner Bath w/Lav., Toilet, Tub/Shower, Medicine Cabinet, Pantry, Refrigerator, 3 Burner Range w/Microwave, Round Dinette Table, Gaucho Style Sofa/Dinette, Overhead Cabinets, Outside Storage, Opt. 10' Awning and More.

Jay Feather Sport 165 Specifications

Specification	Description
Classification	Light Weight
Length	18'0"
Width	7'7"
Height	8'10"
Interior Height	6'6"
Hitch Weight	470 lbs
Dry Weight	2,905 lbs
Gross Weight	3,750 lbs
Cargo Weight	845 lbs
Fresh Water Capacity	30 gals
Grey Water Capacity	31 gals
Black Water Capacity	11 gals
Furnace BTU	18,000
Sleeps	4
Tire Size	13
Interior Color	Sand & Toffee

2009 Jay Feather Sport 197



Jayco Feather Sport Travel Trailer, Rear Corner Bunk Bed w/Lower Double Bed, Rear Corner Bath w/Toilet, Lav., Tub/Shower, Medicine Cabinet, Pantry, Microwave, Overhead Cabinet, Refrigerator, U-Shaped Dinette, Pocket Storage, Sink, 3 Burner Range, Exterior Storage Both Sides, Opt. 12' Awning and More.

Jay Feather Sport 197 Specifications

Specification	Description
Classification	Light Weight
Length	20'0"
Height	9'0"
Interior Height	6'6"
Hitch Weight	325 lbs
Dry Weight	3,310 lbs
Gross Weight	4,350 lbs
Cargo Weight	1,040 lbs
Fresh Water Capacity	30 gals
Grey Water Capacity	31 gals
Black Water Capacity	11 gals
Furnace BTU	18,000
Sleeps	5
Tire Size	13
Interior Color	Sand & Toffee

Jay Feather Sport Features:

Standard Features (2009)

Interior Equipment

- Overhead cabinetry is slanted (select models)
- Cable TV hookup with RG6 coax
- Residential furniture, designed and made by Jayco
- Crank-up antenna with signal booster
- Pleated night shades
- Vinyl flooring
- Manchester Oak doors and drawers

Kitchen/Bedroom/Bath Equipment

- 3 burner range with 9000 BTU SuperBurner and piezo igniter
- 5 cu. ft. flush-mount refrigerator
- Cover for sink/cutting board (1)
- High/rise mixing faucet
- Microwave oven/carousel
- Range hood w/light and fan
- Oversized oven

Bedroom

- Quilted bed mat
- Shirt wardrobe

Bathroom

- Bathroom exhaust vent
- Towel holder
- Marine toilet w/foot flush
- Medicine cabinet w/mirror
- ABS tub surround
- Residential 3-panel passage door
- Shower curtain w/curved shower track

Safety

- Breakaway switch
- Dual hitch safety chains
- Fire extinguisher
- Lock and dead bolt on entrance door
- Propane alarm
- Multiple egress windows
- Smoke detector
- Tinted safety glass windows
- Carbon monoxide detector

Outside Equipment

- Automotive styling rear caps
- 2" hitch coupler
- 13" D-radial tires
- 110V G.F.C.I. exterior receptacle
- Fiberglass, radius corner entrance door and screen door
- HDPE wheel wells
- Baggage doors, lockable, insulated and radius-cornered w/heavy-duty grab handles
- Molded rain gutter with drip spouts
- Amber patio lights w/inside switch
- Prep for RVQ outside grill
- Sewer hose storage compartment
- Stabilizer jacks (2 pair) w/sand pads
- TorFlex independent torsion-axle rubber ride suspension system
- White spoked wheels
- Aerodynamic front profile
- Front window with flush mounted stone guard (select models)
- ABS fender skirt
- E-Z lube axles
- Heavy-duty and retractable entrance step
- Aerodynamic front profile
- Front window with flush-mounted stone guard (select models)
- ABS fender skirt
- Pass-thru storage compartment

Construction Features

- 5/8" seamless Structurwood main floor decking w/PolyFlex underbelly
- 78" ceiling height
- Bead-foam insulation (R-7) in sidewalls, R-9 in roof)
- FRP smooth fiberglass sidewalls exterior
- One-piece seamless rubber roof
- Welded tubular aluminum sidewall framework
- TuffShell vacuum-bond laminated roof and sidewalls
- Cabinetry crafted with screwed stile construction
- E-Coat protected frame
- Electric powered slideout (199)

Heat, Power and Water Equipment

- Auto-ignition furnace w/wall thermostat
- 12V demand water pump
- 12V electrical system w/deluxe 110V 45 amp power converter
- 20 lb LP gas bottle
- 30 amp power cord
- 18,000 BTU furnace
- Gravity fill for water
- Hook-up for city water
- Outside shower
- Rotocast freshwater holding tank
- Water bypass system
- Winterization kit
- Systems monitor panel
- 6 gal. gas water heater

Customer Value Package

- 13,500 BTU A/C
- Multi-Media Sound System AM/FM/CD stereo with MP3 and iPod input jack and 2 speakers
- Carefree patio awning
- Spare tire w/carrier and cover

Options

- Portable, outside gas grill
- Water purification system
- CSA Standards
- **Customer Value Package:** 13,500 BTU A/C; Spare tire w/ carrier and cover; Carefree® patio awning; Multi-Media Premium Sound System™ CD player w/ MP3 and iPod® input jack
- Hydraulic surge brakes

See us for a complete listing of features and available options!

All standard features and specifications are subject to change!