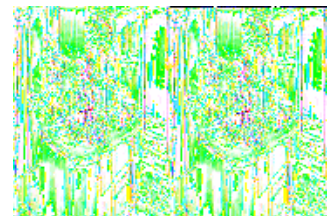
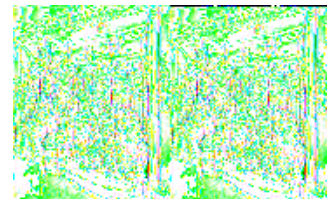
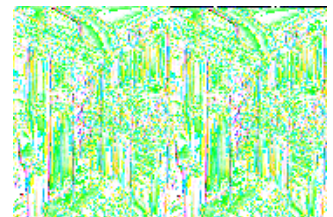
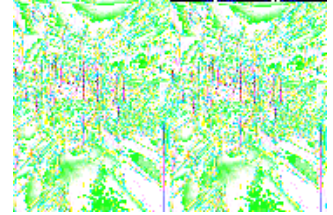


Jayco Designer Fifth Wheels



The Designer fifth wheels by Jayco have been constructed for durability, designed for convenience and built for all around comfort. The Designer offers luxury with it's high-quality amenities which is ideal for long trips or winters in warmer climates.

You might be wondering how a luxury fifth wheel can have a higher built quality, but still have a lower price? The simple reason is that it is a Jayco! The Designer has an abundant list of standard features, which is expected from a Jayco. Bringing you fine fabrics, stylish window treatments and spacious floorplans to choose from, at an affordable price.

The Jayco Designer fifth wheels do not compromise when it comes to comfort, livability and style. It just has it all! So if you want luxury and value, the Jayco Designer has a model that is just right for you.

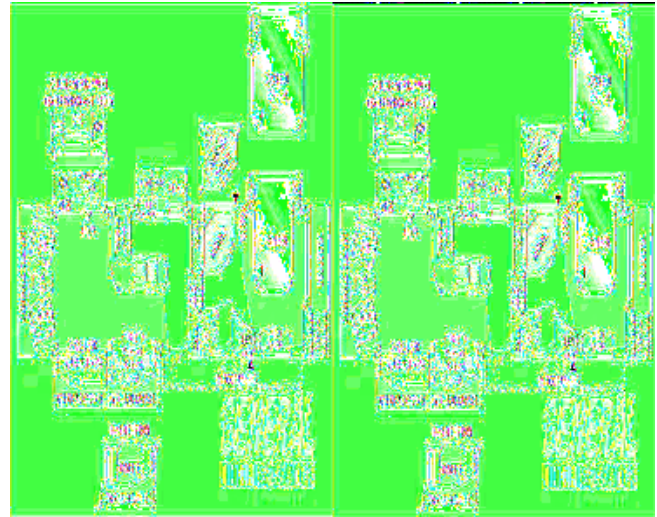
2009 Designer 31RLTS

Triple Slide Designer FW, Rear Living Space w/2 Recliners, End Table, Hide-A-Bed & Free Standing Table & Chairs or Opt. Booth Dinette Slideout, Refrigerator/3 Burner Range & Double Kitchen Sink Slideout, Pantry, Ent. Center, Garden Tub/Opt. Shower, Separate Stool Room, King Bed Slide, Chest/Hamper, Wash/Dryer Opt. & More.

Designer 31RLTS Specifications

Specification	Description
Length	35'4"
Height	13'1"
Interior Height	6'4"
Hitch Weight	2,500 lbs
Dry Weight	10,885 lbs
Gross Weight	15,800 lbs
Cargo Weight	3,615 lbs
Fresh Water Capacity	85 gals
Grey Water Capacity	70 gals
Black Water Capacity	35 gals
Sleeps	4
Tire Size	16
Slides	3

2009 Designer 34RLQS



Quad Slide Designer Fifth Wheel Rear Living w/2 Recliners & End Table, Slide Out Desk/Ent. Center or Opt. Deluxe Ent. Center, Hide-A-Bed & Free Standing Table/ Chairs or Opt. Booth Dinette Slide Out, 3 Burner Range w/Micro. & Refrig. Slide Out, L-Shaped Counter w/DbL. Sink & Overhead Cabinets, Pantry, Shower or Opt. Bath Tub, Queen Bed w/ DbL. Chest, Slide Out or Opt. King Bed, Ward., Chest/Hamper, Lav. w/Med. Cab., Opt. TV & Washer/Dryer, 16' Awning and Much More.

Designer 34RLQS Specifications

Specification	Description
Length	37'5"
Height	13'3"
Interior Height	6'5"
Hitch Weight	2,365 lbs
Dry Weight	11,210 lbs
Gross Weight	15,800 lbs
Cargo Weight	4,590 lbs
Fresh Water Capacity	87 gals
Grey Water Capacity	87 gals
Black Water Capacity	52 gals
Sleeps	4
Tire Size	16
Slides	4
Interior Color	Mocha, Slate & Brick

Designer Features:

Standard Features (2009)

Exterior Equipment

- 12V hitch light
- 16" radial tires
- Entrance door is fiberglass and radius cornered w/screen door
- Outdoor media center
- Galvanized steel wheel wells
- ABS fender skirts
- Rain guttering, molded w/ drip spouts
- Battery box for two batteries
- Electric-powered front jacks
- E-Z Lube® axles
- Caps on front and rear made of fiberglass w/radius corners
- Patio light w/inside switch
- Sidewall corners radiused at top and bottom
- Baggage doors, lockable, insulated and radius-cornered w/heavy-duty grab handles
- Ladder to roof
- Painted bottom radius skirting
- Front jacks w/quick release pins
- Street-side utility light
- Black-framed, radius-cornered, awning style windows w/tinted safety glass
- Store-Galore™ basement storage
- Safety glass
- Bracket for 50 amp power cord in front basement
- Triple retractable main entrance step
- L.E.D. taillights

Heat, Power & Water Equipment

- 12-gal. gas/electric DSI auto-ignition water heater
- 110V G.F.C.I. protected exterior receptacle
- 12V electrical system w/110V, 80-amp power converter
- Interior Command Center®
- 50-amp quick-connect power cord
- 50-amp electric service
- A/C chill grill
- Vents are pre-wired for attic fan in bedroom and living room
- Uni-Dock™ utility center in front basement area
- 12V demand water pump
- Monitor panel for all systems
- Furnace with wall thermostat, auto ignition
- Battery disconnect switch
- Hook-up for city water
- In-floor ducted heat
- Holding and fresh water tanks made of rotocast design
- Double 30-lb. propane gas bottles, w/regulator (in side compartment on sliding tray)
- Prep for washer/dryer
- Water heater bypass system

- Water system winterization kit
- Prep for solar panel

Interior Equipment

- Cable TV hook-up w/RG6 coax cabling
- Ceiling fan w/light
- Crank-up TV antenna w/signal booster
- Decorative oil-rubbed bronze lighting throughout
- Decorative throw pillows for sofa hide-a-bed
- High-intensity 12V lighting package
- Pleated day/night shades
- Entertainment center
- SuperSlide™ w/flush floor design
- Hide-a-bed sofa (air mattress)
- Solid hardwood interior entry grab handle
- Linoleum floor in entryway
- Overhead cabinetry in slideout room with raised panel doors
- Residential-style trim and molding
- Rocker recliner(s)
- Prep for satellite dish for roof and sidewall
- Sliding windows for slidout end walls
- Provincial Glazed Maple raised-paneled doors and drawers throughout
- Carpeting w/padding throughout unit
- Message center
- Hardwood cabinet stiles
- End table with built-in magazine rack
- Ball bearing drawer guides throughout

Kitchen Equipment

- Extendable free-standing table w/4 chairs
- 3 burner range w/9000-BTU SuperBurner™ and piezo igniter
- Bi-fold, recessed cover for stove
- High-rise single lever faucet w/pull-out sprayer
- Silverware drawer, divided for utensils
- Paper towel holder
- 8 cu. ft. refrigerator w/double door
- One piece J-Stone™ surface countertop w/integrated deep bowls
- Oversized 21" oven
- Raised hardwood refrigerator fronts
- Microwave oven w/carousel
- J-Stone™ cover for sink/cutting board (2)
- Fluorescent lighting under cabinet
- Wallpaper border
- Sponge holder under sink

Construction

- I-Class® cambered structural steel I-Beam frames
- FRP smooth fiberglass sidewall exteriors
- Bead-foam insulation (R-9 in sidewalls, R-25 in roof)
- Electric-powered slideout
- Hardwood cabinetry crafted w/screwed stile construction
- 5/8" tongue and groove plywood main floor decking

- Welded tubular-aluminum sidewall framework
- One-piece, seamless, rubber roof
- TuffShell™ vacuum-bond laminated sidewalls
- Vacuum-bonded 5" crowned laminated roof
- PolyFlex™ one piece underbelly covering
- Reflective foil insulation in main and bedroom floor area and all slideout floors
- Enclosed, insulated and heated underbelly
- Welded aluminum floor studs on 16" centers
- Pin box, long

Bedroom Equipment

- Bed lifts up easily on struts, 2 ABS storage bins below
- Laundry hamper
- Accordion-style bedroom door (select models)
- Dresser lamp
- Queen Bed
- Decorative pillows for bed
- Quilted bedspread with 2 pillow shams
- Dresser drawers, residential style
- Decorative headboard
- TV cabinet with satellite and cable jacks
- Nightstands next to bed

Bathroom Equipment

- Radius glass shower door
- Oil-rubbed bronze fixtures
- Thetford porcelain stool with foot pedal
- Fiberglass radius shower
- Wall switches for all lights
- Adjustable shower head
- Ducted heating
- Skylight in tub/shower
- Toilet paper holder
- Towel holder
- Window in commode area
- Residential medicine cabinet w/mirror
- 6-panel residential style passage doors
- Ducted heating

Safety

- Breakaway switch
- Lock and dead bolt entrance doors
- Fire extinguisher
- Propane alarm
- Multiple egress windows
- Smoke alarm Carbon monoxide detectors
- Tinted safety glass windows
- Carbon monoxide detectors

Options

Customer Value Package

- 20" digital LCD TV in bedroom
- Deluxe Cloud Ten™ pillowtop mattress (60" x 80")
- Foldable, exterior grab handle
- Floor mounted safe
- Bathroom power vent
- 8-lug polished aluminum wheels
- Multi-Media Premium Sound System™ AM/FM/CD/DVD stereo w/MP3 & iPod® input jack
- Water purification system
- 15,000 BTU central A/C with quick cool feature, louvered directional ceiling vents
- Security lights (2)
- Outside shower
- Spare tire with carrier
- Black holding tank sprayer
- Decorative fascia board
- Central vacuum system
- Carefree® Travl'r 12 volt electric patio awning
- 32" digital LCD TV in living area
- MOR/ryde® hub suspension

Options

- CSA standards
- High-gloss Gel-coat fiberglass sidewall exteriors
- Washer/dryer combination
- Portable, outside gas grill
- Generator prep
- Onan® 5500-watt Microlite generator, w/auto changeover (generator prep included)
- Carefree® SideOut Kover II awnings for slideouts (3)
- 2 leather recliners ILO fabric recliners
- Fireplace, 5100 BTU
- Bike rack
- 2nd 13,500 BTU A/C in bedroom w/wall thermostat
- 10 cu. ft. refrigerator
- Rear powered roof vent
- Front powered roof vent
- Front & rear powered roof vent
- Convection microwave
- 2 euro chairs ILO rocker recliners
- MOR/ryde® pin box
- Remote control front landing gear
- Thermal pane tinted safety glass windows
- Carefree® SideOut Kover II awnings for slideouts (4)
- Satellite kit: tripod, dish, coax cable, electronic satellite finder, installation video
- Electric stabilizer jacks
- 42" LCD HDTV ILO 32"

Please see us for additional features and available options.

All standard features and specifications are subject to change.