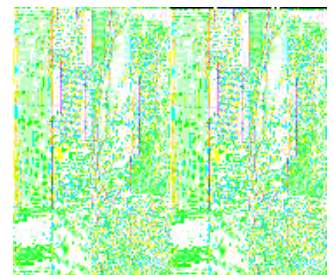
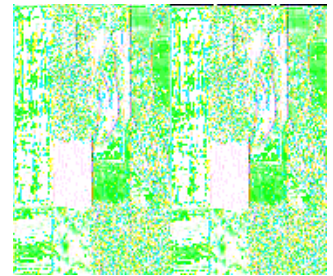
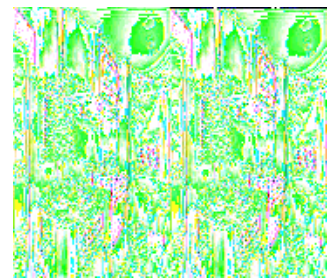
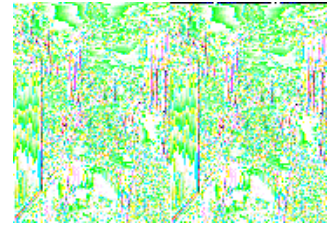


Jayco Jay Feather Ex-Port Expandables



The Jay Feather Ex-Port travel trailer by Jayco is a winning combination! Jayco has combined the compact style of the Jay Feather Sport with the expandability of the Jay Feather EXP. The result is a fun-loving travel trailer that's light enough to be towed by most SUVs or mini-vans.

It comes with all the essentials then expands to increase your sleeping space at night. With the extended bed ends the Jay Feather Ex-Port gives you plenty of living space. A full galley combined with a large u-shaped dinette are just a few of the amenities this trailer has to offer.

With plenty of room and comfort for the whole family why not spend your next adventure traveling with a 2009 Jay Feather Ex-Port travel trailer by Jayco.

2009 Jay Feather Ex-Port 17C



Jay Feather Ex-Port Travel Trailer Expandable by Jayco, Front & Rear Queen Expandable Beds, Overhead Shelf, Rear Bath w/Tub/Shower, Toilet, Lav., Pantry, 3 Burner Range w/Micro., Single Kitchen Sink, Overhead Cab., Refrig./TV Shelf, Radio, U-Shaped Dinette with Table, Overhead Shelf, Ext. Storage, 10' Awning & More.

Jay Feather Ex-Port 17C Specifications

Specification	Description
Classification	Ultra Light Weight
Length	17'4"
Height	9'7"
Interior Height	6'6"
Hitch Weight	465 lbs
Dry Weight	2,850 lbs
Gross Weight	3,500 lbs
Cargo Weight	650 lbs
Fresh Water Capacity	31 gals
Grey Water Capacity	31 gals
Black Water Capacity	23 gals
Furnace BTU	18,000
Sleeps	6
Tire Size	13
Interior Color	Sand & Toffee

2008 Jay Feather Ex-Port 17C



Front & Rear Queen Tent End Beds, Rear Overhead Shelf, Pantry, 3 Burner Range, Microwave, Sink, Tub/Shower, Lav., Refrigerator/TV Shelf Above, U-Shaped Dinette w/Table, Overhead Shelf in Front, Radio, 10' Opt. Awning & More.

Jay Feather Ex-Port 17C Specifications

Specification	Description
Classification	Ultra Light Weight
Length	17'8"
Height	9'7"
Interior Height	6'6"
Hitch Weight	465 lbs
Dry Weight	2,920 lbs
Gross Weight	3,500 lbs
Cargo Weight	580 lbs
Fresh Water Capacity	30 gals
Grey Water Capacity	30 gals
Black Water Capacity	22 gals
Sleeps	6
Tire Size	13

Jay Feather Ex-Port Features:

Standard Features (2009)

Customer Value Package

- 13,500-BTU A/C
- Carefree patio awning
- Microwave oven with carousel
- Multi-Media Sound System AM/FM/CD stereo with MP3 and iPod input jack and speakers
- Water heater bypass system

Interior

- Bathroom exhaust vent
- Cable TV hook-up w/RG6 coax
- Residential furniture, designed and made by Jayco
- Crank-up antenna w/signal booster
- Vinyl flooring
- Manchester Oak doors and drawers
- Mini-blinds throughout

Kitchen

- 3 burner range with 9000 BTU SuperBurner and piezo igniter
- High-rise mixing faucet
- Large kitchen window
- Range hood with light and exhaust fan
- 5 cu. ft. flush mount refrigerator

Bedroom

- Queen bed size bunk mats (2)
- 60" rear bed

Bathroom

- Towel holder
- Marine toilet w/foot flush
- Shower curtain with curved shower track
- Bathroom exhaust vent
- Vanity mirror

Safety

- Breakaway switch
- Dual hitch safety chains
- Fire extinguisher
- Lock and dead bolt on entrance door
- Propane alarm
- Multiple egress windows
- Smoke alarm

- Clear safety glass windows

Exterior

- 13" C-range tires
- 110V GFCI protected exterior receptacles
- DuraTek™ water-repellent sectionalized vinyl tent
- EZ lube axles
- Fiberglass, radius cornered entrance door and screen door
- Heavy-duty, retractable entrance step
- HDPE wheel wells
- Self-supporting lockable end-bunks (no poles required)
- Baggage doors, lockable, insulated and radius-cornered with heavy-duty grab handle
- Molded rain gutters w/drip spouts
- Amber patio light w/switch inside
- Sewer hose storage compartment
- TorFlex independent torsion-axle rubber ride suspension system
- White-spoked wheels
- Aerodynamic front profile
- ABS fender skirts
- 2" hitch coupler
- Stabilizer jacks (1 pair, rear) w/sand pads
- Winterization kit

Construction

- 78" ceiling height
- Bead-foam insulation (R-9 in roof, R-9 in floor, R-7 in walls)
- Cabinetry crafted with screwed stile construction
- Cable support system for bunk ends (interior mount)
- FRP smooth fiberglass sidewalls exterior
- One-piece, seamless, rubber roof material
- TuffShell vacuum-bond laminated roof and sidewalls
- Unitized, 1-1/2" laminated construction of floor
- Welded tubular-aluminum sidewall and roof framework
- E-Coat protected frame

Heat, Power, and Water

- Water heater bypass
- Winterization kit
- 12V demand water pump
- 12V electrical system w/110V 45 amp power converter
- 30-amp power cord
- Auto-ignition furnace with wall thermostat
- 6 gallon gas water heater
- Gravity fill for city water
- Hookup for city water
- System monitor panel
- Rotocast fresh water holding tanks
- Single 30 lb. propane gas bottle, with regulator
- 18,000-BTU furnace with auto-ignition

Options

- **Customer Value Package:** 13,500 BTU A/C; Multi-Media Sound System™ CD player w/MP3 input jack; Microwave; Patio awning; Water heater bypass
- CSA standards
- Spare tire w/carrier
- Oven
- Hydraulic surge brakes
- Aluminum Rims

See us for complete listing of features and available options!

All standard features and specifications are subject to change.