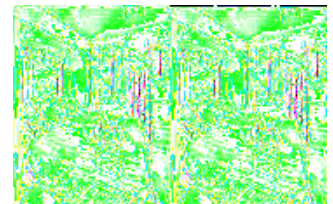
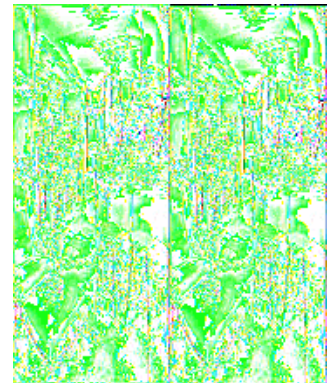
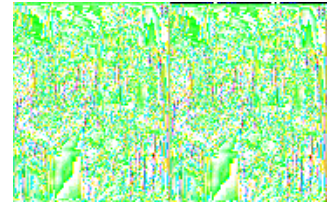


Dutchmen RV Denali Fifth Wheels



The grandeur and beauty of the Denali National Park has inspired the Dutchmen Denali laminated travel trailers and fifth wheels. Denali will captivate your senses and deliver first-class features and comfort with unprecedented value no matter which model you choose.

It has been Dutchmen's practice to bring you high quality, convenience and comfort in any of their recreational vehicle lines available. The Denali is no exception. With its distinctive style and premium features Denali stands out from the crowd. Features like premium residential furniture, large picture windows with designer valances and fabric night shades. Plus, all slideout rooms feature designer lighting, a slide fascia and large overhead storage cabinets. The native people of the great Alaskan wilderness call the massive peak of Mount McKinley "Denali", which when translated means "Great One". Dutchmen is bringing you a recreational vehicle which exemplifies just that, a "GREAT" travel trailer or fifth wheel when you choose a Denali. Let your journey begin today!



2008 Denali 28LBBS-M5



Dutchmen Denali Double Slide, Bunk Beds w/Ladder to Loft Above, Closet w/TV, Dinette Plus, Hide-A-Bed, Refrigerator, Double Kitchen Sink, 3 Burner Range, Counter w/Extension & Bar Stools, Ent. Center, Neo-Angle Shower, Queen Bed Slideout, Dresser, TV Closet w/Drawers, Closet w/Shelves, Opt. T Available, & More.

Denali 28LBBS-M5 Specifications

Specification	Description
Length	33'6"
Width	8'0"
Height	12'6"
Hitch Weight	1,832 lbs
Dry Weight	8,765 lbs
Gross Weight	10,560 lbs
Cargo Weight	1,795 lbs
Fresh Water Capacity	46 gals
Grey Water Capacity	84 gals
Black Water Capacity	42 gals
Furnace BTU	30,000
Sleeps	9
Tire Size	ST225/75R15D
Slides	2

2008 Denali 28RL-M5



Dutchmen Denali Single Slide, Rear Living Area w/2 Lounge Chairs, Opt. End Table, Overhead Cabinets, Sofa Bed & Dinette Plus Slideout, Ent. Center, Refrig., 3 Burner Range, Double Kitchen Sink, Counter Ext., Angle Shower, Stool Room, Lav., Med. Cabinet, Closet w/Drawers, Front Queen Bed w/Shirt Closet & More.

Denali 28RL-M5 Specifications

Specification	Description
Length	31'3"
Width	8'0"
Height	12'6"
Hitch Weight	1,482 lbs
Dry Weight	7,812 lbs
Gross Weight	10,560 lbs
Cargo Weight	2,748 lbs
Fresh Water Capacity	46 gals
Grey Water Capacity	84 gals
Black Water Capacity	42 gals
Furnace BTU	34,000
Sleeps	6
Tire Size	ST225/75R15D
Slides	1

Denali Features:

Standard Features (2008)

Interior

- 6'7" Living Area Slide Room Height
- Comfort Plus Queen Bed (FW Bed Slides)
- Aluminum-framed, Laminated Bath Deck (FW)
- Residential, Steel, Roller Drawer Guides
- 12V Power Exhaust Roof Vent in Bath
- Sink and Stove Cover
- Skylight in Bath
- Glass Shower Doors Recessed into Shower Base (Neo-Angle Showers)
- Hide-A-Bed Sofa
- Solid Wood Arched Cabinet Doors
- Solid Wood Refrigerator Fronts
- Slider Windows on Sides of Living Room Slide
- Designer Howard Miller Clock
- 8 cu. ft. Double Door Refrigerator (FW)
- LCD Flat Screen TV With Swing Arm
- 4 Interior Speakers & 2 Exterior Speakers
- Porcelain Toilet with Foot Flush Lever
- 10 Gallon Gas/Electric DSI Water Heater with Water Heater Bypass (FW, Optional TT)
- Magic Chef Oven with Auto Ignition
- Hydro Flame Forced Air, DSI Furnace with Wall Thermostat
- Ceiling Fan with Light (FW)
- Range Hood with 12V Light and Exhaust Fan
- Countertop Extension (Where Possible)
- Premium High-Rise Galley Faucet
- Hinged Dinette Seats with Storage Below
- Norcold Refrigerator with Easy Temp Adjustments

Exterior

- Weather Guard Package with R14 Roof Insulation & Heated, Enclosed & Insulated Underbelly
- Detachable 30amp Power Cord/50 amp Optional
- Front Fiberglass Cap w/Area Lights
- Rear Ladder (FW, Optional TT)
- Electric Front Jacks with Rear Stabilizer Jacks (FW)
- Front/Rear Stabilizer Jacks (TT)
- 13.5 BTU Ducted Air Conditioner (15K Optional)
- Extra Large Entry Assist Handle and Interior Handle
- Cable and Satellite Hook-Ups
- Exterior, Hot & Cold Spray Away Shower w/15' Hose
- GL20 Extra Dark Tint Windows
- Spare Tire
- EZ Lube Hubs
- 1.5" Quick-Drain Fresh Water Tank
- "San-t-flush" black tank flush
- 65 Amp Power Converter
- Every Unit 100% Extreme Weather Rain Bay Test

- Large Pass-Through Storage (FW)
- Laminated Rear Wall
- Laminated Front Wall (TT)
- Ant-Wicking Paint Around all Wall Openings
- Aluminum diamond Plate Rock Guard
- Triple-Sealed Slide Out System
- 30" Radius Corner Entry Door

Standard Denali Value Package

-
- Detachable 30 Amp Power Cord
-
- Bedroom & Living Room Carpet
-
- 30lb. LP Bottles
-
- Residential Steel Roller Drawer Guides
-
- High Rise Galley Faucet
-
- Dual Bowl, Brushed Nickel-Color Sink
-
- Easy Lube Hubs
-
- Systems Monitor Panel
-
- Smoke, LP & Carbon Monoxide Detectors
-
- Front Fiberglass Cap with Area Lights (FW)
-
- Aluminum-Framed, Laminated Fiberglass Walls
-
- Ladder (FW)
-
- Power Roof Vent in Bath
-
- Bar Stools (see floorplan for availability)
-
- Hitch Helper (FW)

Standard Relax In Luxury Package

-
- Sink & Stove Covers
-
- Wall Border
-
- Solid Wood Cabinet Doors & Drawers
-
- Skylight
-
- Phone Jack/Data Port
-

- Decorative Throw Pillows & Bedspread
-
- Hide-a-Bed Sofa
-
- The "Great One" Picture
-
- Executive Chairs (see floorplan for availability)
-
- Solid Wood Refrigerator Front
-
- Slider Windows on Sides of Living Slide
-
- Howard Miller Clock
-
- Ceiling Fan with Light (FW)
-
- 20" LCD TV with DVD Player
-
- AM/FM Stereo with CD Player
-
- 4 Interior & 2 Exterior Speakers

Standard The "Great One" Package

-
- Electric Front Jacks (FW)
-
- Rear Stabilizer Jacks (FW)
-
- Front & Rear Stabilizer Jacks (TT)
-
- Hitch Light
-
- Spare Tire
-
- Exterior Storage Light
-
- 13.5 BTU Ducted A/C
-
- TV Antenna with Cable & Satellite Hook-Up
-
- Awning
-
- Microwave
-
- 3 Burner Range and Oven with Auto Ignition
-
- Entry Assist Handle
-
- 8 Cubic Foot Double Door Refrigerator (FW; TT is 6 cu.ft.)
-
- Exterior Spray Away Shower
-
- 10 Gal Gas/Electric Water Heater with DSI (FW)

-
- Weather Guard Package (Enclosed, Insulated & Heated Underbelly & R14 Insulation in Roof)

***SEE DEALER FOR AVAILABLE OPTIONS**

****REQUIRED PACKAGES**

Please see us for a complete list of features and options!

All standard features and specifications are subject to change.