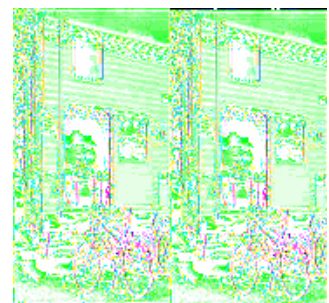
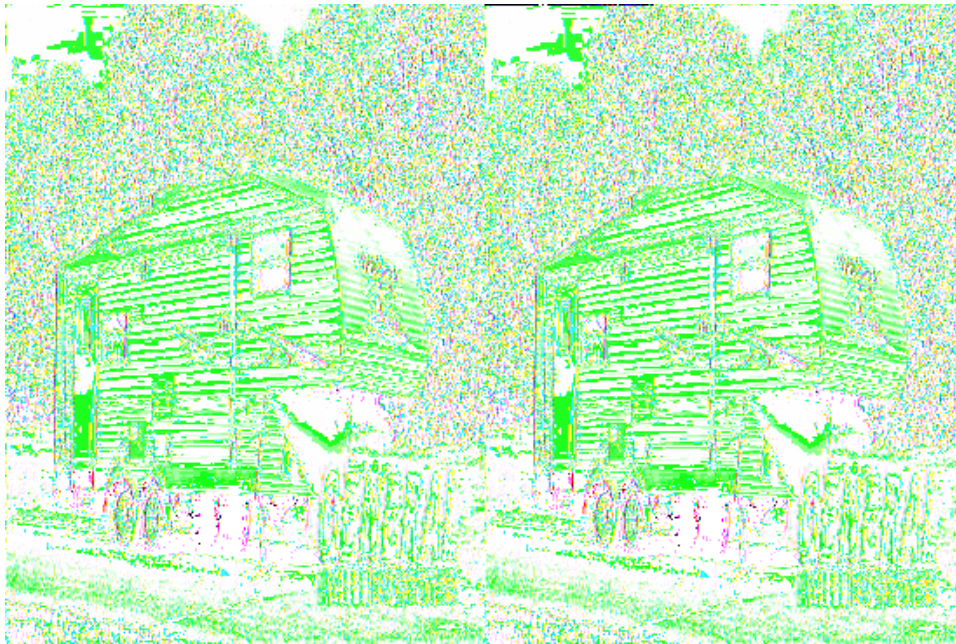


## Dutchmen RV Classic Fifth Wheels

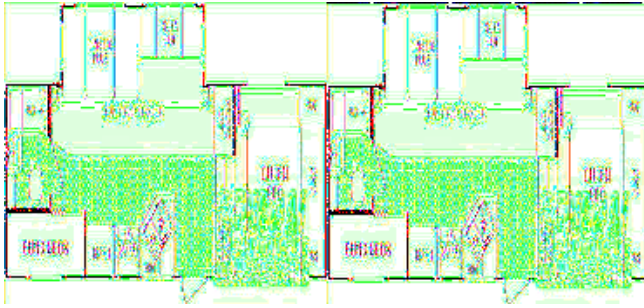


The Dutchmen Classic DSL travel trailers and mid-profile fifth wheels continue to be a best seller because Dutchmen means high quality and value. Year after year the focus remains the same, providing you the customer with an innovative product loaded with standard equipment and unique features.

These travel trailers and fifth wheels give you a large number of floorplan styles to choose from featuring large living areas and kitchens, oversized bath and bedrooms, and abundant storage areas. Floorplans ranging in size from 24' to 38' feet provide you with a selection to choose from that not only fits your family but that you are comfortable towing. Dutchmen's attention to detail in design and construction is why customer's always return when ready to purchase a new travel trailer or fifth wheel. Dutchmen can get you on the road enjoying your next adventure in a recreational vehicle that you will absolutely love!



## 2008 Classic 24B-M5

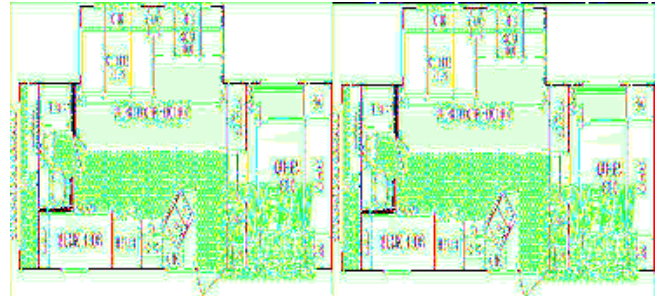


Single Slide, Rear Corner Bunks, Rear Corner Bath w/Lav., Tub/Shower, Booth Dinette & Sofa Bed Slideout, Refrigerator, 3 Burner Range, Double Kitchen Sink, Ent. Center, Closet/Pantry/TV, Front Queen Bed w/Shirt Closet, Nightstand & Much More.

### Classic 24B-M5 Specifications

Specification	Description
Length	27'10"
Width	8'0"
Height	12'2"
Hitch Weight	1,117 lbs
Dry Weight	6,685 lbs
Gross Weight	10,560 lbs
Cargo Weight	3,875 lbs
Fresh Water Capacity	46 gals
Grey Water Capacity	42 gals
Black Water Capacity	42 gals
Furnace BTU	34,000
Sleeps	8
Tire Size	ST 225/75R15D
Slides	1

## 2008 Classic 24G-M5



Single Slide, Rear Stor-More Garage w/Shelves, Tub/Shower, Bunk Beds, Dinette Plus & Sofa Bed Slideout, Refrigerator, Double Kitchen Sink, 3 Burner Range, Ent. Center, Pantry/TV Closet, Queen Bed, Storage Cabinets and Nightstands, and More.

### Classic 24G-M5 Specifications

Specification	Description
Length	29'0"
Width	8'0"
Height	12'2"
Hitch Weight	1,356 lbs
Dry Weight	7,278 lbs
Gross Weight	10,560 lbs
Cargo Weight	3,282 lbs
Fresh Water Capacity	46 gals
Grey Water Capacity	42 gals
Black Water Capacity	42 gals
Furnace BTU	34,000
Sleeps	8
Tire Size	ST 225/75R15D
Slides	1

## Classic Features:

### Standard Features (2008)

#### Appliances & Electrical

- 12 volt demand water pump
- Safety equipment: Fire extinguisher, smoke/LP/CO detector
- 110 volt duplex receptacles inside and out
- 55 amp converter w/battery charger
- Hydro flame forced air, DSI furnace w/wall thermostat

#### Kitchen

- Norcold double door gas/electric refrigerator
- Range hood w/12 volt light and exhaust fan
- Larger "Dinette Plus" eating area
- Double bowl sink w/high rise faucet
- Countertop extension (see floor plan)

#### Bath

- ABS tub/shower surround
- Medicine Cabinet w/Mirror
- 12 volt power exhaust roof vent in bath
- GFI protected 110 volt duplex receptacle
- Aqua Magic foot flush toilet
- Glass shower door (neo-angle showers)

#### Misc.

- Hardwood arched cabinet doors
- Lift-Up bed platform with storage below
- Slide-Out overhead cabinet (livingroom only)
- Mini-blinds throughout
- Brushed nickel cabinet door hardware
- Coat hooks
- Residential tile-like linoleum
- Living room carpet (where possible)

#### Construction

- I-beam cambered chassis
- ALKO leaf spring axle
- Tandem axles w/4 wheel electric brakes
- Large support outriggers w/solid continuous weld
- Double entry steps
- Rear bumper w/sewer hose storage
- Fiberglass insulation R-7
- Rain gutter w/corner downspout
- 1 piece seamless rubber roof
- Full walk-on roof with 5" trusses and 3/8" decking

- Hitch light
- Pass-through storage light

### **Optional**

- 5-in-1 surround sound home theater system (DSL & M5 models)
- 13.5 BTU roof air conditioning
- Microwave Oven
- Patio awning
- Skylight over tub
- TV antenna w/power booster and cable jack, satellite prep
- 3 Burner Range w/Oven
- Pac-n-Play storage
- Executive Chairs
- Exterior spray and wash station
- Stabilizer jacks

**See us for a complete list of features and options!**

**All Standard Features and Specifications Are Subject To Change.**